

Datasheet for ABIN2777467  
**anti-AATF antibody (N-Term)**[Go to Product page](#)

## 3 Images

## Overview

Quantity:	100 µL
Target:	AATF
Binding Specificity:	N-Term
Reactivity:	Human, Mouse, Rat, Dog, Horse, Rabbit, Saccharomyces cerevisiae
Host:	Rabbit
Clonality:	Polyclonal
Conjugate:	This AATF antibody is un-conjugated
Application:	Western Blotting (WB), Immunohistochemistry (IHC)

## Product Details

Immunogen:	The immunogen is a synthetic peptide directed towards the N terminal region of human AATF
Sequence:	EEEEDEESGM EEGDDAEDSQ GESEEDRAGD RNSEDDGVVM TFSSVKVSEE
Predicted Reactivity:	Dog: 77%, Horse: 85%, Human: 100%, Mouse: 77%, Rabbit: 100%, Rat: 90%, Yeast: 90%
Characteristics:	This is a rabbit polyclonal antibody against AATF. It was validated on Western Blot and immunohistochemistry.
Purification:	Affinity Purified

## Target Details

Target:	AATF
Alternative Name:	AATF ( <a href="#">AATF Products</a> )

## Target Details

Background:	<p>The AATF gene encodes a protein that was identified on the basis of its interaction with MAP3K12/DLK, a protein kinase known to be involved in the induction of cell apoptosis. This gene product contains a leucine zipper, which is a characteristic motif of transcription factors, and was shown to exhibit strong transactivation activity when fused to Gal4 DNA binding domain. Overexpression of this gene interfered with MAP3K12 induced apoptosis.</p> <p>Alias Symbols: DED, CHE1, CHE-1</p> <p>Protein Interaction Partner: MDM2, DAPK3, AR, HIPK2, NGDN, UBC, TSG101, LIN28A, MMS19, ZNF468, NEDD4L, WHSC1, SMAD3, EFN3, CPD, UBD, CAND1, PIN1, SIRT7, SUMO2, CHEK2, RELA, tat, MAGED1, PCBD2, SS18L1, LZTR1, MPHOSPH6, POLR2J, MPP6, PAWR, DAZAP2, ATR, ATM, CHEK1, LDOC1, SP1, RB1, MAP</p> <p>Protein Size: 560</p>
Molecular Weight:	63 kDa
Gene ID:	26574
NCBI Accession:	<a href="#">NM_012138</a> , <a href="#">NP_036270</a>
UniProt:	<a href="#">Q9NY61</a>
Pathways:	<a href="#">Neurotrophin Signaling Pathway</a> , <a href="#">SARS-CoV-2 Protein Interactome</a>

## Application Details

Application Notes:	Optimal working dilutions should be determined experimentally by the investigator.
Comment:	Antigen size: 560 AA
Restrictions:	For Research Use only

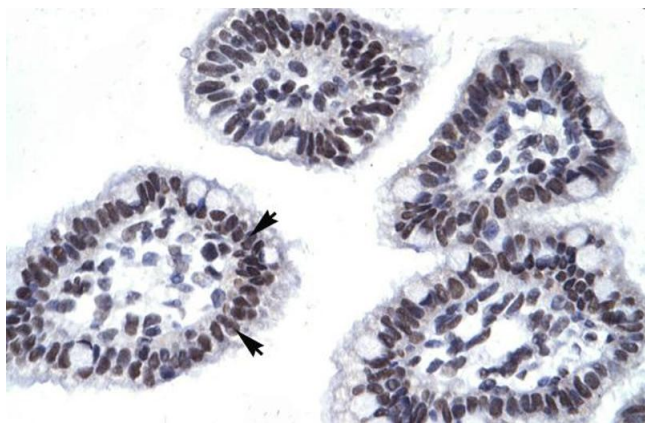
## Handling

Format:	Liquid
Concentration:	Lot specific
Buffer:	Liquid. Purified antibody supplied in 1x PBS buffer with 0.09 % (w/v) sodium azide and 2 % sucrose.
Preservative:	Sodium azide
Precaution of Use:	This product contains Sodium azide: a POISONOUS AND HAZARDOUS SUBSTANCE which should be handled by trained staff only.
Handling Advice:	Avoid repeated freeze-thaw cycles.

## Handling

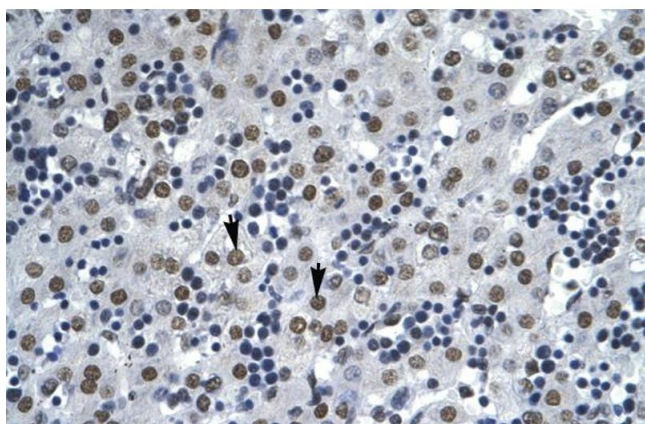
Storage:	-20 °C
Storage Comment:	For short term use, store at 2-8°C up to 1 week. For long term storage, store at -20°C in small aliquots to prevent freeze-thaw cycles.

## Images



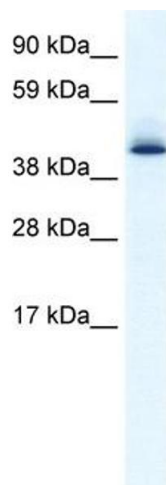
### Immunohistochemistry

**Image 1.** Human Intestine



### Immunohistochemistry

**Image 2.** Human Liver



### Western Blotting

**Image 3.** WB Suggested Anti-AATF Antibody Titration: 0.2-1 ug/ml ELISA Titer: 1:12500 Positive Control: Human kidney