



[Go to Product page](#)

Datasheet for ABIN2777468
anti-GFI1 antibody (N-Term)

2 Images

Overview

Quantity:	100 µL
Target:	GFI1
Binding Specificity:	N-Term
Reactivity:	Human, Rat, Mouse, Cow, Dog, Rabbit, Guinea Pig, Horse
Host:	Rabbit
Clonality:	Polyclonal
Conjugate:	This GFI1 antibody is un-conjugated
Application:	Western Blotting (WB)

Product Details

Immunogen:	The immunogen is a synthetic peptide directed towards the N terminal region of human GFI1
Sequence:	MPRSFLVKSK KAHSYHQPRS PGPDYSLRLE NVPAPSRADS TSNAGGAKAE
Predicted Reactivity:	Cow: 100%, Dog: 100%, Guinea Pig: 100%, Horse: 100%, Human: 100%, Mouse: 100%, Rabbit: 100%, Rat: 100%
Characteristics:	This is a rabbit polyclonal antibody against GFI1. It was validated on Western Blot using a cell lysate as a positive control.
Purification:	Affinity Purified

Target Details

Target:	GFI1
---------	------

Target Details

Alternative Name:	GFI1 (GFI1 Products)
Background:	<p>GFI1 may be a transcription factor involved in regulating the expression of genes active in the S phase during cell cycle progression in T-cells. GFI1 may be involved in tumor progression.</p> <p>Defects in GFI1 are a cause of autosomal dominant severe congenital neutropenia (SCN) and dominant nonimmune chronic idiopathic neutropenia of adults (NI-CINA)</p> <p>Alias Symbols: ZNF163, SCN2, GFI-1</p> <p>Protein Interaction Partner: RELA, SPI1, CHAF1A, PICK1, PIAS2, RCOR1, KDM1A, HDAC2, PRDM5, HDAC1, EHMT2, PIAS3, RUNX1T1, ARIH2, UBC,</p> <p>Protein Size: 422</p>
Molecular Weight:	46 kDa
Gene ID:	2672
NCBI Accession:	NM_005263 , NP_005254
UniProt:	Q99684

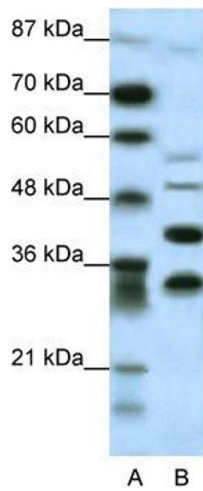
Application Details

Application Notes:	Optimal working dilutions should be determined experimentally by the investigator.
Comment:	Antigen size: 422 AA
Restrictions:	For Research Use only

Handling

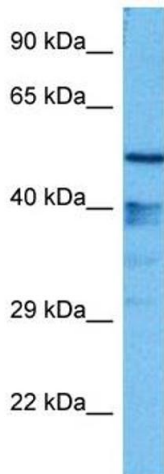
Format:	Liquid
Concentration:	Lot specific
Buffer:	Liquid. Purified antibody supplied in 1x PBS buffer with 0.09 % (w/v) sodium azide and 2 % sucrose.
Preservative:	Sodium azide
Precaution of Use:	This product contains Sodium azide: a POISONOUS AND HAZARDOUS SUBSTANCE which should be handled by trained staff only.
Handling Advice:	Avoid repeated freeze-thaw cycles.
Storage:	-20 °C
Storage Comment:	For short term use, store at 2-8°C up to 1 week. For long term storage, store at -20°C in small

aliquots to prevent freeze-thaw cycles.



Western Blotting

Image 1. WB Suggested Anti-GFI1 Antibody Titration: 0.2-1 ug/ml ELISA Titer: 1:312500 Positive Control: HepG2 cell lysate



Western Blotting

Image 2. Host: Mouse Target Name: GFI1 Sample Tissue: Mouse Liver Antibody Dilution: 1ug/ml