

Datasheet for ABIN2777470
anti-ZBTB32 antibody (N-Term)[Go to Product page](#)

3 Images

Overview

Quantity:	100 µL
Target:	ZBTB32
Binding Specificity:	N-Term
Reactivity:	Human, Mouse, Cow, Guinea Pig, Rabbit, Horse, Rat
Host:	Rabbit
Clonality:	Polyclonal
Conjugate:	This ZBTB32 antibody is un-conjugated
Application:	Western Blotting (WB)

Product Details

Immunogen:	The immunogen is a synthetic peptide directed towards the N terminal region of human ZBTB32
Sequence:	PIRLSPYGS DRLVQLAARL RPALCDTLIT VGSQEPPAHS LVLGVSSQQL
Predicted Reactivity:	Cow: 100%, Guinea Pig: 100%, Horse: 93%, Human: 100%, Mouse: 92%, Rabbit: 100%, Rat: 100%
Characteristics:	This is a rabbit polyclonal antibody against ZBTB32. It was validated on Western Blot using a cell lysate as a positive control.
Purification:	Affinity Purified

Target Details

Target:	ZBTB32
---------	--------

Target Details

Alternative Name:	ZBTB32 (ZBTB32 Products)
Background:	<p>ZBTB32 may play an essential role during the proliferative stages of primitive hematopoietic progenitors, possibly acting in concert with (a subset of) the Fanconi anemia proteins. This gene can also interact with GATA-2 and can modify GATA-2 transactivation capacity.</p> <p>Alias Symbols: Rog, FAXF, FAZF, TZFP, ZNF538</p> <p>Protein Interaction Partner: DAB1, RHOXF2, RBPMS, MLX, MVP, PRKAB2, PITX1, FMOD, ERVK-6, Hoxa1, AR, ATXN1, ZNF490, HOXD4, ELF2, ZBTB16, TXNIP, FANCC, GATA2,</p> <p>Protein Size: 302</p>
Molecular Weight:	33 kDa
Gene ID:	27033
UniProt:	Q8WVP2

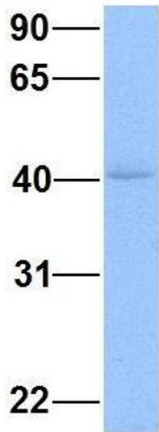
Application Details

Application Notes:	Optimal working dilutions should be determined experimentally by the investigator.
Comment:	Antigen size: 302 AA
Restrictions:	For Research Use only

Handling

Format:	Liquid
Concentration:	Lot specific
Buffer:	Liquid. Purified antibody supplied in 1x PBS buffer with 0.09 % (w/v) sodium azide and 2 % sucrose.
Preservative:	Sodium azide
Precaution of Use:	This product contains Sodium azide: a POISONOUS AND HAZARDOUS SUBSTANCE which should be handled by trained staff only.
Handling Advice:	Avoid repeated freeze-thaw cycles.
Storage:	-20 °C
Storage Comment:	For short term use, store at 2-8°C up to 1 week. For long term storage, store at -20°C in small aliquots to prevent freeze-thaw cycles.

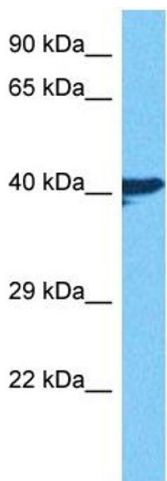
ZBTB32



Rabbit Anti-ZBTB32
Sample Type: Human 721_B
Antibody Concentration: 1ug/mL

Western Blotting

Image 1. Host: Rabbit Target Name: WT1 Sample Type: 721_B Antibody Dilution: 1.0ug/ml ZBTB32 is supported by BioGPS gene expression data to be expressed in 721_B



Host: Rabbit
Target Name: ZBTB32
Sample Type: DLD1 Cell Lysate
Antibody Dilution: 1.0µg/ml

Western Blotting

Image 2. Host: Rabbit Target Name: ZBTB32 Sample Tissue: Human DLD1 Whole Cell Antibody Dilution: 1ug/ml



Western Blotting

Image 3. WB Suggested Anti-ZBTB32 Antibody Titration: 0.2-1 ug/ml ELISA Titer: 1:2500 Positive Control: HepG2 cell lysate