



[Go to Product page](#)

Datasheet for ABIN2777486
anti-FHL1 antibody (N-Term)

4 Images

Overview

Quantity:	100 µL
Target:	FHL1
Binding Specificity:	N-Term
Reactivity:	Human, Mouse, Rat, Dog, Cow, Guinea Pig, Rabbit, Sheep, Horse
Host:	Rabbit
Clonality:	Polyclonal
Conjugate:	This FHL1 antibody is un-conjugated
Application:	Western Blotting (WB)

Product Details

Immunogen:	The immunogen is a synthetic peptide corresponding to a region of Human
Sequence:	SKEVHYKNRF WHDTCFRCAK CLHPLANETF VAKDNKILCN KCTTREDSPK
Predicted Reactivity:	Cow: 100%, Dog: 100%, Guinea Pig: 100%, Horse: 92%, Human: 92%, Mouse: 100%, Rabbit: 100%, Rat: 100%, Sheep: 100%
Characteristics:	This is a rabbit polyclonal antibody against FHL1. It was validated on Western Blot.
Purification:	Affinity Purified

Target Details

Target:	FHL1
Alternative Name:	FHL1 (FHL1 Products)

Target Details

Background: LIM proteins, named for 'LIN11, ISL1, and MEC3,' are defined by the possession of a highly conserved double zinc finger motif called the LIM domain. FHL1 contains 3 LIM zinc-binding domains. It may have an involvement in muscle development or hypertrophy. LIM proteins, named for 'LIN11, ISL1, and MEC3,' are defined by the possession of a highly conserved double zinc finger motif called the LIM domain. [supplied by OMIM]. Publication Note: This RefSeq record includes a subset of the publications that are available for this gene. Please see the Entrez Gene record to access additional publications.

Alias Symbols: FHL1B, KYO-T, MGC111107, SLIM1, bA535K18.1, KYOT, SLIM, FHL-1, FHL1A, FLH1A, XMPMA, SLIM-1, SLIMMER

Protein Interaction Partner: SUMO2, UBC, SRPK1, SMAD4, SMAD3, SMAD2, LMNA, CSNK1D, NRIP1, ESR1, HIVEP3, SMURF1, UBE2E2, STAT4, RING1, RBPJ, FHL1, KCNA5, PRNP, USP15, HHV8GK18_gp81, SP1, TXNIP, DEAF1, PDE4DIP, AKAP12, EED, HES1, DBN1, CBX4, FHL2, SRF, MYBPC1,

Protein Size: 280

Molecular Weight: 32 kDa

Gene ID: 2273

NCBI Accession: [NM_001449](#), [NP_001440](#)

UniProt: [Q6IB30](#)

Application Details

Application Notes: Optimal working dilutions should be determined experimentally by the investigator.

Comment: Antigen size: 280 AA

Restrictions: For Research Use only

Handling

Format: Liquid

Concentration: Lot specific

Buffer: Liquid. Purified antibody supplied in 1x PBS buffer with 0.09 % (w/v) sodium azide and 2 % sucrose.

Preservative: Sodium azide

Precaution of Use: This product contains Sodium azide: a POISONOUS AND HAZARDOUS SUBSTANCE which

Handling

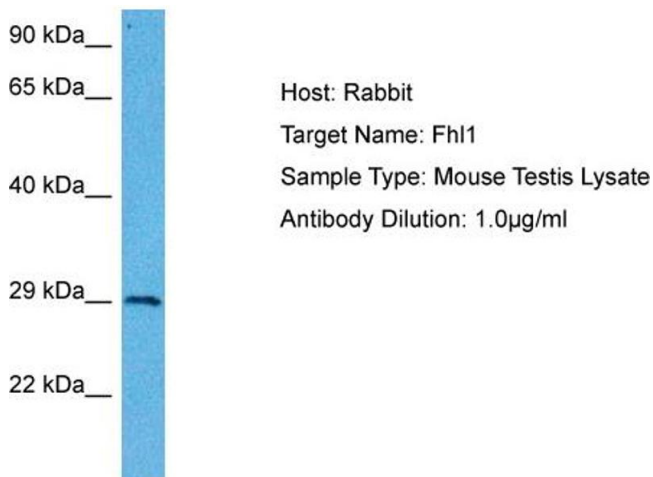
should be handled by trained staff only.

Handling Advice: Avoid repeated freeze-thaw cycles.

Storage: -20 °C

Storage Comment: For short term use, store at 2-8°C up to 1 week. For long term storage, store at -20°C in small aliquots to prevent freeze-thaw cycles.

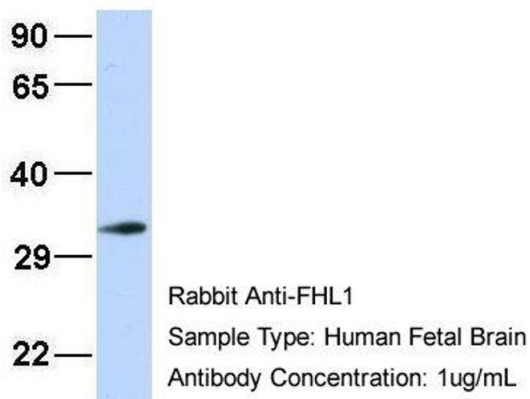
Images



Western Blotting

Image 1. Host: Mouse Target Name: FHL1 Sample Tissue: Mouse Testis Antibody Dilution: 1ug/ml

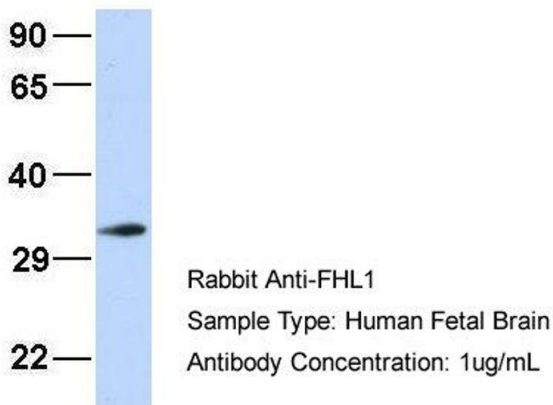
FHL1



Western Blotting

Image 2. Host: Rabbit Target Name: FHL1 Sample Type: Human Fetal Brain Antibody Dilution: 1.0ug/ml

FHL1



Western Blotting

Image 3. Host: Rabbit Target Name: FHL1 Sample Type: Human Fetal Brain Antibody Dilution: 1.0ug/ml

Please check the [product details page](#) for more images. Overall 4 images are available for ABIN2777486.