

Datasheet for ABIN2777490  
**anti-GTF2H4 antibody (N-Term)**[Go to Product page](#)

## 2 Images

## Overview

Quantity:	100 µL
Target:	GTF2H4
Binding Specificity:	N-Term
Reactivity:	Human, Mouse, Rat, Guinea Pig, Dog, Cow, Goat, Rabbit, Horse
Host:	Rabbit
Clonality:	Polyclonal
Conjugate:	This GTF2H4 antibody is un-conjugated
Application:	Western Blotting (WB)

## Product Details

Immunogen:	The immunogen is a synthetic peptide directed towards the N terminal region of human GTF2H4
Sequence:	ALWVKKEFSK AQEESTGLLS GLRIWHTQLL PGGGLQGLILN PIFRQNLRIA
Predicted Reactivity:	Cow: 100%, Dog: 100%, Goat: 100%, Guinea Pig: 100%, Horse: 100%, Human: 100%, Mouse: 100%, Rabbit: 92%, Rat: 100%
Characteristics:	This is a rabbit polyclonal antibody against GTF2H4. It was validated on Western Blot using a cell lysate as a positive control.
Purification:	Affinity Purified

## Target Details

Target:	GTF2H4
---------	--------

## Target Details

Alternative Name:	GTF2H4 ( <a href="#">GTF2H4 Products</a> )
Background:	<p>GTF2H4 belongs to the TFB2 family. It is a component of the core-TFIID basal transcription factor involved in nucleotide excision repair (NER) of DNA and, when complexed to CAK, in RNA transcription by RNA polymerase II.</p> <p>Alias Symbols: TFIID, TFB2</p> <p>Protein Interaction Partner: UBC, CDK7, RNF11, TP53, MNAT1, GTF2H3, GTF2H2, GTF2H1, ERCC3, CCNH, XBP1P1, MYC, GTF2E1, ERCC5, MED21, BTAF1, TBP, POLR2A, GTF2F1, GTF2B, BRCA1,</p> <p>Protein Size: 462</p>
Molecular Weight:	52 kDa
Gene ID:	2968
NCBI Accession:	<a href="#">NM_001517</a> , <a href="#">NP_001508</a>
UniProt:	<a href="#">Q92759</a>
Pathways:	<a href="#">DNA Damage Repair</a>

## Application Details

Application Notes:	Optimal working dilutions should be determined experimentally by the investigator.
Comment:	Antigen size: 462 AA
Restrictions:	For Research Use only

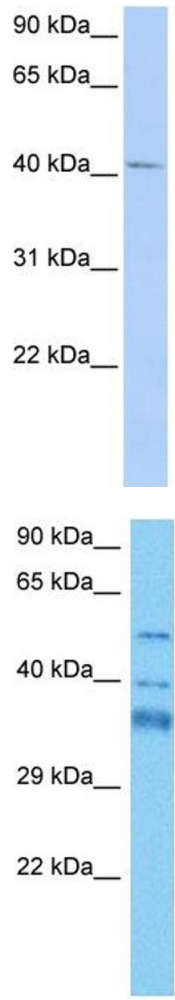
## Handling

Format:	Liquid
Concentration:	Lot specific
Buffer:	Liquid. Purified antibody supplied in 1x PBS buffer with 0.09 % (w/v) sodium azide and 2 % sucrose.
Preservative:	Sodium azide
Precaution of Use:	This product contains Sodium azide: a POISONOUS AND HAZARDOUS SUBSTANCE which should be handled by trained staff only.
Handling Advice:	Avoid repeated freeze-thaw cycles.
Storage:	-20 °C

Handling

Storage Comment: For short term use, store at 2-8°C up to 1 week. For long term storage, store at -20°C in small aliquots to prevent freeze-thaw cycles.

Images



**Western Blotting**

**Image 1.** WB Suggested Anti-GTF2H4 Antibody Titration: 0.2-1 ug/ml ELISA Titer: 1:62500 Positive Control: HepG2 cell lysate

**Western Blotting**

**Image 2.** Host: Mouse Target Name: GTF2H4 Sample Tissue: Mouse Heart Antibody Dilution: 1ug/ml