

Datasheet for ABIN2777491
anti-GTF2I antibody (N-Term)

5 Images

[Go to Product page](#)

Overview

Quantity:	100 µL
Target:	GTF2I
Binding Specificity:	N-Term
Reactivity:	Human, Mouse, Rat, Dog, Horse, Cow, Guinea Pig, Rabbit
Host:	Rabbit
Clonality:	Polyclonal
Conjugate:	This GTF2I antibody is un-conjugated
Application:	Western Blotting (WB), Immunohistochemistry (IHC)

Product Details

Immunogen:	The immunogen is a synthetic peptide directed towards the N terminal region of human GTF2I
Sequence:	ILSPGGSCGP IKVKTEPTED SGISLEMAAV TVKEESED PD YYQYNIQGS
Predicted Reactivity:	Cow: 100%, Dog: 100%, Guinea Pig: 100%, Horse: 100%, Human: 100%, Mouse: 100%, Rabbit: 100%, Rat: 100%
Characteristics:	This is a rabbit polyclonal antibody against GTF2I. It was validated on Western Blot and immunohistochemistry.
Purification:	Affinity Purified

Target Details

Target:	GTF2I
---------	-------

Target Details

Alternative Name:	GTF2I (GTF2I Products)
Background:	<p>GTF2I encodes a multifunctional phosphoprotein with roles in transcription and signal transduction. It is deleted in Williams-Beuren syndrome, a multisystem developmental disorder caused by the deletion of contiguous genes at chromosome 7q11.23. The exon(s) encoding 5' UTR has not been fully defined, but this gene is known to contain at least 34 exons, and its alternative splicing generates 4 transcript variants.</p> <p>Alias Symbols: WBS, DIWS, SPIN, IB291, BAP135, BTKAP1, TFII-I, WBSCR6, GTFII-I</p> <p>Protein Interaction Partner: TP53, ZMYM3, PIAS2, TUBG1, TRAF6, SUMO2, SUMO3, AP2B1, DPY30, GCC1, MTUS2, MDM2, UBC, SUMO1, RPA3, RPA2, RPA1, EED, RNF2, SUZ12, CTPS2, WARS, RPL28, RAD23B, PRPS2, PRKDC, NUCB1, METTL1, ADSL, FBXO6, UBD, CBX2, TAB2, AP4S1, CBX4, MAPK12, C4BPA, MAP3K3, SLU</p> <p>Protein Size: 978</p>
Molecular Weight:	110 kDa
Gene ID:	2969
NCBI Accession:	NM_033000 , NP_127493
UniProt:	Q75M86

Application Details

Application Notes:	Optimal working dilutions should be determined experimentally by the investigator.
Comment:	Antigen size: 978 AA
Restrictions:	For Research Use only

Handling

Format:	Liquid
Concentration:	Lot specific
Buffer:	Liquid. Purified antibody supplied in 1x PBS buffer with 0.09 % (w/v) sodium azide and 2 % sucrose.
Preservative:	Sodium azide
Precaution of Use:	This product contains Sodium azide: a POISONOUS AND HAZARDOUS SUBSTANCE which should be handled by trained staff only.
Handling Advice:	Avoid repeated freeze-thaw cycles.

Handling

Storage: -20 °C

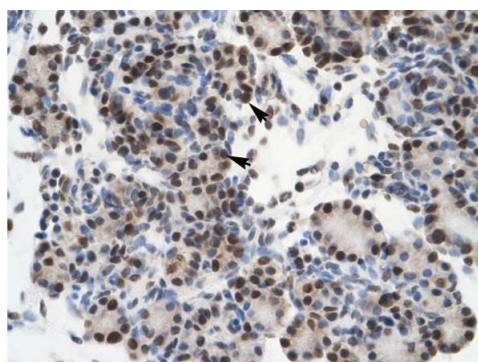
Storage Comment: For short term use, store at 2-8°C up to 1 week. For long term storage, store at -20°C in small aliquots to prevent freeze-thaw cycles.

Images



Western Blotting

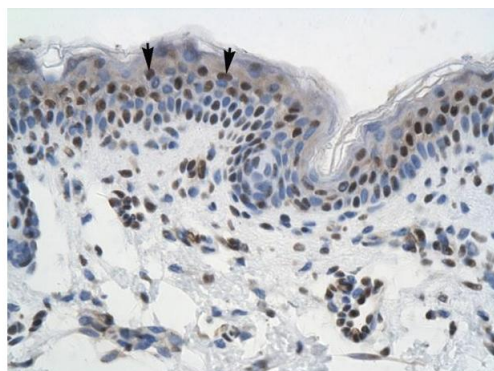
Image 1. WB Suggested Anti-GTF2I Antibody Titration: 0.2-1 ug/ml ELISA Titer: 1:312500 Positive Control: HepG2 cell lysate There is BioGPS gene expression data showing that GTF2I is expressed in HepG2



Rabbit Anti- GTF2I Antibody
Catalog Number: ARP31910
Lot Number: QC1440
Paraffin Embedded Tissue: Human Pancreas
Cells with Positive label: Epithelial cells of pancreatic acinus(Indicated with Arrows)
Antibody Concentration: 4.0-8.0 µg/ml
Magnification: 400X

Immunohistochemistry

Image 2. Rabbit Anti-GTF2I Antibody Paraffin Embedded Tissue: Human Pancreas Cellular Data: Epithelial cells of pancreatic acinus Antibody Concentration: 4.0-8.0 ug/ml Magnification: 400X



Rabbit Anti- GTF2I Antibody
Catalog Number: ARP31910
Lot Number: QC1440
Paraffin Embedded Tissue: Human Skin
Cells with Positive label: Squamous epithelial cells (Indicated with Arrows)
Antibody Concentration: 4.0-8.0 µg/ml
Magnification: 400X

Immunohistochemistry

Image 3. Rabbit Anti-GTF2I Antibody Paraffin Embedded Tissue: Human Skin Cellular Data: Squamous epithelial cells Antibody Concentration: 4.0-8.0 ug/ml Magnification: 400X

Please check the [product details page](#) for more images. Overall 5 images are available for ABIN2777491.

Order at www.antibodies-online.com | www.antikoerper-online.de | www.anticorps-enligne.fr | www.antibodies-online.cn

International: +49 (0)241 95 163 153 | USA & Canada: +1 877 302 8632 | support@antibodies-online.com

Page 3/3 | Product datasheet for ABIN2777491 | 09/11/2023 | Copyright antibodies-online. All rights reserved.