

Datasheet for ABIN2777496
anti-GRHL1 antibody (N-Term)



[Go to Product page](#)

1 Image

Overview

Quantity:	100 µL
Target:	GRHL1
Binding Specificity:	N-Term
Reactivity:	Human, Rat, Mouse, Cow, Dog, Horse, Pig
Host:	Rabbit
Clonality:	Polyclonal
Conjugate:	This GRHL1 antibody is un-conjugated
Application:	Western Blotting (WB)

Product Details

Immunogen:	The immunogen is a synthetic peptide directed towards the N terminal region of human GRHL1
Sequence:	GENRVQVLKN VPFNIVLPHG NQLGIDKRGH LTAPDTTVTV SIATMPTHSI
Predicted Reactivity:	Cow: 100%, Dog: 100%, Horse: 100%, Human: 100%, Mouse: 100%, Pig: 85%, Rat: 100%
Characteristics:	This is a rabbit polyclonal antibody against GRHL1. It was validated on Western Blot using a cell lysate as a positive control.
Purification:	Affinity Purified

Target Details

Target:	GRHL1
Alternative Name:	GRHL1 (GRHL1 Products)

Target Details

Background:	<p>GRHL1 is a member of the grainyhead family of transcription factors. GRHL1 interacts with sister of mammalian grainyhead (SOM) and may function as a transcription factor during development. Two transcript variants encoding distinct isoforms have been identified for GRHL1. This gene encodes a member of the grainyhead family of transcription factors. The encoded protein interacts with sister of mammalian grainyhead (SOM) and may function as a transcription factor during development. Two transcript variants encoding distinct isoforms have been identified for this gene.</p> <p>Alias Symbols: LBP-32, LBP32, MGR, TFCEP2L2, NH32</p> <p>Protein Interaction Partner: GRHL1, GRHL3,</p> <p>Protein Size: 618</p>
Molecular Weight:	70 kDa
Gene ID:	29841
NCBI Accession:	NM_014552 , NP_055367
UniProt:	Q9NZI5
Pathways:	Regulation of Lipid Metabolism by PPARalpha

Application Details

Application Notes:	Optimal working dilutions should be determined experimentally by the investigator.
Comment:	Antigen size: 618 AA
Restrictions:	For Research Use only

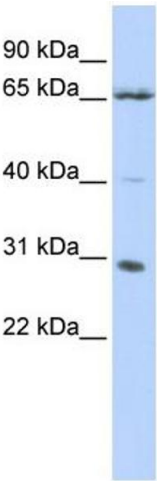
Handling

Format:	Liquid
Concentration:	Lot specific
Buffer:	Liquid. Purified antibody supplied in 1x PBS buffer with 0.09 % (w/v) sodium azide and 2 % sucrose.
Preservative:	Sodium azide
Precaution of Use:	This product contains Sodium azide: a POISONOUS AND HAZARDOUS SUBSTANCE which should be handled by trained staff only.
Handling Advice:	Avoid repeated freeze-thaw cycles.

Handling

Storage:	-20 °C
Storage Comment:	For short term use, store at 2-8°C up to 1 week. For long term storage, store at -20°C in small aliquots to prevent freeze-thaw cycles.

Images



Western Blotting

Image 1. WB Suggested Anti-GRHL1 Antibody Titration: 0.2-1 ug/ml ELISA Titer: 1:62500 Positive Control: Jurkat cell lysate