

Datasheet for ABIN2777497

anti-TFCP2L1 antibody (N-Term)

5 Images

[Go to Product page](#)

Overview

Quantity:	100 µL
Target:	TFCP2L1
Binding Specificity:	N-Term
Reactivity:	Human, Mouse, Rat, Dog, Cow, Rabbit, Guinea Pig, Horse, Saccharomyces cerevisiae
Host:	Rabbit
Clonality:	Polyclonal
Conjugate:	This TFCP2L1 antibody is un-conjugated
Application:	Western Blotting (WB), Immunohistochemistry (IHC)

Product Details

Immunogen:	The immunogen is a synthetic peptide directed towards the N terminal region of human TFCP2L1
Sequence:	LRDVLALPIF KQEEPQLSPE NEARLPPLQY VLCAATSPAV KLHEETLTYL
Predicted Reactivity:	Cow: 100%, Dog: 100%, Guinea Pig: 93%, Horse: 93%, Human: 100%, Mouse: 93%, Rabbit: 100%, Rat: 93%, Yeast: 75%
Characteristics:	This is a rabbit polyclonal antibody against TFCP2L1. It was validated on Western Blot and immunohistochemistry.
Purification:	Affinity Purified

Target Details

Target:	TFCP2L1
---------	---------

Target Details

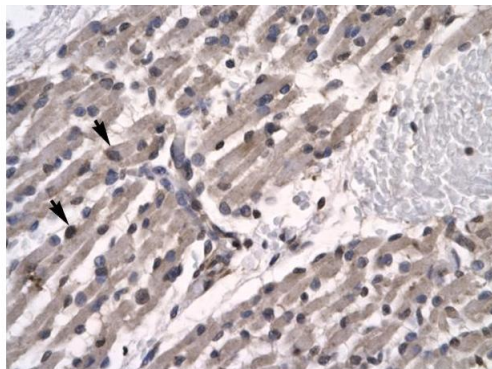
Alternative Name:	TFCP2L1 (TFCP2L1 Products)
Background:	<p>TFCP2L1 is a candidate CP2 family member. It is expressed in a developmentally regulated fashion in vivo and acts as a direct repressor of transcription. CP2-related proteins comprise a family of DNA-binding transcription factors that are generally activators of transcription and expressed ubiquitously.</p> <p>Alias Symbols: CRTR1, LBP-9, LBP9</p> <p>Protein Interaction Partner: CFAP20, RBM8A, TFAP4, TFCP2L1, UBP1,</p> <p>Protein Size: 479</p>
Molecular Weight:	54 kDa
Gene ID:	29842
NCBI Accession:	NM_014553 , NP_055368
UniProt:	Q9NZI6

Application Details

Application Notes:	Optimal working dilutions should be determined experimentally by the investigator.
Comment:	Antigen size: 479 AA
Restrictions:	For Research Use only

Handling

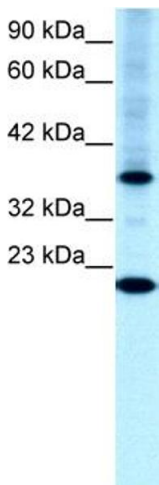
Format:	Liquid
Concentration:	Lot specific
Buffer:	Liquid. Purified antibody supplied in 1x PBS buffer with 0.09 % (w/v) sodium azide and 2 % sucrose.
Preservative:	Sodium azide
Precaution of Use:	This product contains Sodium azide: a POISONOUS AND HAZARDOUS SUBSTANCE which should be handled by trained staff only.
Handling Advice:	Avoid repeated freeze-thaw cycles.
Storage:	-20 °C
Storage Comment:	For short term use, store at 2-8°C up to 1 week. For long term storage, store at -20°C in small aliquots to prevent freeze-thaw cycles.



Rabbit Anti-TFCP2L1 Antibody
Catalog Number: ARP31918
Lot Number: QC1442
Paraffin Embedded Tissue: Human Muscle
Cells with Positive label: Skeletal Muscle Cells (Indicated with Arrows)
Antibody Concentration: 4.0-8.0 µg/ml
Magnification: 400X

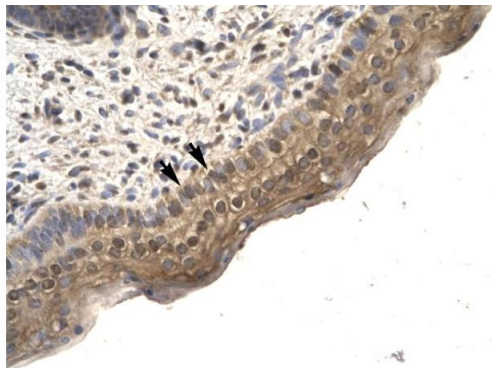
Immunohistochemistry

Image 1. HumanMuscle



Western Blotting

Image 2. WB Suggested Anti-TFCP2L1 Antibody Titration:
0.2-1 ug/ml Positive Control: HepG2 cell lysate



Rabbit Anti-TFCP2L1 Antibody
Catalog Number: ARP31918
Lot Number: QC1442
Paraffin Embedded Tissue: Human Spermatophore
Cells with Positive label: Epithelial Cells (Indicated with Arrows)
Antibody Concentration: 4.0-8.0 µg/ml
Magnification: 400X

Immunohistochemistry

Image 3. Human Spermatophore

Please check the [product details page](#) for more images. Overall 5 images are available for ABIN2777497.