

Datasheet for ABIN2777503  
**anti-HCLS1 antibody (N-Term)**

9 Images

1 Publication

[Go to Product page](#)

## Overview

Quantity:	100 µL
Target:	HCLS1
Binding Specificity:	N-Term
Reactivity:	Human, Mouse, Rat, Rabbit, Cow, Dog, Horse, Guinea Pig
Host:	Rabbit
Clonality:	Polyclonal
Conjugate:	This HCLS1 antibody is un-conjugated
Application:	Western Blotting (WB), Immunohistochemistry (IHC)

## Product Details

Immunogen:	The immunogen is a synthetic peptide directed towards the N terminal region of human HCLS1
Sequence:	VNDISEKEQR WGAKTIEGSG RTEHINIHL RNKVSEEDV LRKKEMESGP
Predicted Reactivity:	Cow: 86%, Dog: 86%, Guinea Pig: 86%, Horse: 86%, Human: 100%, Mouse: 86%, Rabbit: 86%, Rat: 86%
Characteristics:	This is a rabbit polyclonal antibody against HCLS1. It was validated on Western Blot and immunohistochemistry.
Purification:	Protein A purified

## Target Details

Target:	HCLS1
---------	-------

## Target Details

Alternative Name:	HCLS1 ( <a href="#">HCLS1 Products</a> )
Background:	<p>HCLS1 Tyr phosphorylation catalyzed by Syk and Lyn plays a crucial role in the translocation of the protein to the membrane and is involved in the cytoskeleton rearrangement triggered by thrombin in human platelets. This gene is a substrate for caspase cleavage during apoptosis.</p> <p>Alias Symbols: HS1, CTTNL</p> <p>Protein Interaction Partner: SH2D4A, UBC, Mbp, Dlg4, NOTCH1, QKI, TERF1, TRIM29, SSBP3, BLZF1, IKBKG, LZTR1, ZBTB25, HS1BP3, HAX1, ACTR2, MAP4K1, CASP3, SYK, WAS, LYN, FGR, CSNK2A1, CD79A, ACTA1, GRB2, ACTR3,</p> <p>Protein Size: 486</p>
Molecular Weight:	54 kDa
Gene ID:	3059
NCBI Accession:	<a href="#">NM_005335</a> , <a href="#">NP_005326</a>
UniProt:	<a href="#">P14317</a>
Pathways:	<a href="#">Fc-epsilon Receptor Signaling Pathway</a> , <a href="#">EGFR Signaling Pathway</a> , <a href="#">Neurotrophin Signaling Pathway</a> , <a href="#">Regulation of Actin Filament Polymerization</a> , <a href="#">Myometrial Relaxation and Contraction</a> , <a href="#">Maintenance of Protein Location</a>

## Application Details

Application Notes:	Optimal working dilutions should be determined experimentally by the investigator.
Comment:	Antigen size: 486 AA
Restrictions:	For Research Use only

## Handling

Format:	Liquid
Concentration:	Lot specific
Buffer:	Liquid. Purified antibody supplied in 1x PBS buffer with 0.09 % (w/v) sodium azide and 2 % sucrose.
Preservative:	Sodium azide
Precaution of Use:	This product contains Sodium azide: a POISONOUS AND HAZARDOUS SUBSTANCE which should be handled by trained staff only.

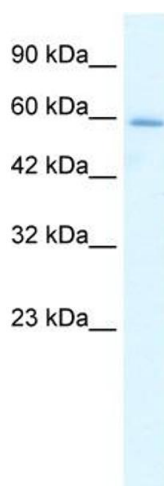
## Handling

Handling Advice:	Avoid repeated freeze-thaw cycles.
Storage:	-20 °C
Storage Comment:	For short term use, store at 2-8°C up to 1 week. For long term storage, store at -20°C in small aliquots to prevent freeze-thaw cycles.

## Publications

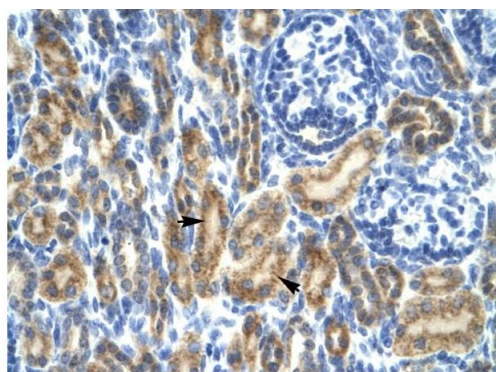
Product cited in:	Ursini, Cavalleri, Fazio, Angrisano, Iacovelli, Porcelli, Maddalena, Punzi, Mancini, Gelao, Romano, Masellis, Calabrese, Rampino, Taurisano, Di Giorgio, Keller, Tarantini, Sinibaldi, Quarto et al.: "BDNF rs6265 methylation and genotype interact on risk for schizophrenia. ..." in: <b>Epigenetics</b> , Vol. 11, Issue 1, pp. 11-23, (2016) ( <a href="#">PubMed</a> ).
-------------------	---

## Images



### Western Blotting

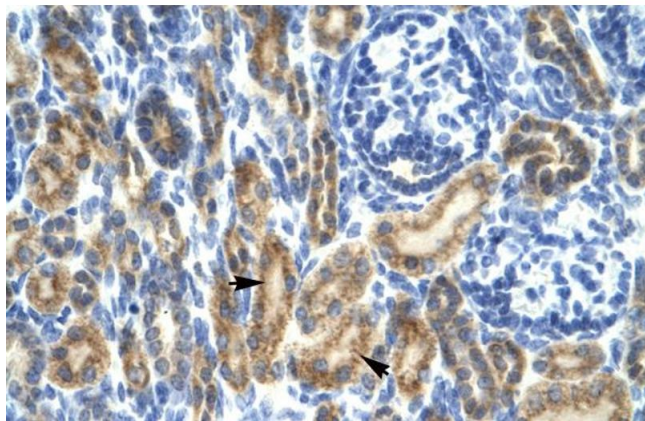
**Image 1.** WB Suggested Anti-HCLS1 Antibody Titration: 1.25ug/ml Positive Control: Jurkat cell lysate HCLS1 is supported by BioGPS gene expression data to be expressed in Jurkat



Rabbit Anti-HCLS1 Antibody  
Catalog Number: ARP31928  
Lot Number: QC4828  
Paraffin Embedded Tissue: Human Kidney  
Cells with Positive label: Epithelial cells of renal tubule (Indicated with Arrows)  
Antibody Concentration: 4.0-8.0 µg/ml  
Magnification: 400X

### Immunohistochemistry

**Image 2.** Rabbit Anti-HCLS1 Antibody Paraffin Embedded Tissue: Human Kidney Cellular Data: Epithelial cells of renal tubule Antibody Concentration: 4.0-8.0 ug/ml Magnification: 400X



#### Immunohistochemistry (Paraffin-embedded Sections)

**Image 3.** Rabbit Anti-HCLS1 Antibody ,Paraffin Embedded

Tissue: Human Kidney

Cellular Data: Epithelial cells of renal tubule

Antibody Concentration: 4.0-8.0 µg/mL

Magnification: .00X

Please check the [product details page](#) for more images. Overall 9 images are available for ABIN2777503.