



[Go to Product page](#)

Datasheet for ABIN2777512

## anti-FOXA2 antibody (Middle Region)

6 Images

3 Publications

### Overview

Quantity:	100 µL
Target:	FOXA2
Binding Specificity:	Middle Region
Reactivity:	Human, Rat, Mouse, Dog, Rabbit, Horse, Pig
Host:	Rabbit
Clonality:	Polyclonal
Conjugate:	This FOXA2 antibody is un-conjugated
Application:	Western Blotting (WB)

### Product Details

Immunogen:	The immunogen is a synthetic peptide directed towards the middle region of human FOXA2
Sequence:	ASQAQLGEAA GPASET PAGT ESPHSSASPC QEHKRGGLGE LKGT PAAALS
Predicted Reactivity:	Dog: 100%, Horse: 100%, Human: 100%, Mouse: 92%, Pig: 100%, Rabbit: 77%, Rat: 92%
Characteristics:	This is a rabbit polyclonal antibody against FOXA2. It was validated on Western Blot using a cell lysate as a positive control.
Purification:	Affinity Purified

### Target Details

Target:	FOXA2
Alternative Name:	FOXA2 ( <a href="#">FOXA2 Products</a> )

## Target Details

---

**Background:** FOXA2 is a member of the forkhead class of DNA-binding proteins. These hepatocyte nuclear factors are transcriptional activators for liver-specific transcripts such as albumin and transthyretin, and they also interact with chromatin. Similar family members in mice have roles in the regulation of metabolism and in the differentiation of the pancreas and liver. This gene has been linked to sporadic cases of maturity-onset diabetes of the young. This gene encodes a member of the forkhead class of DNA-binding proteins. These hepatocyte nuclear factors are transcriptional activators for liver-specific transcripts such as albumin and transthyretin, and they also interact with chromatin. Similar family members in mice have roles in the regulation of metabolism and in the differentiation of the pancreas and liver. This gene has been linked to sporadic cases of maturity-onset diabetes of the young. Two transcript variants encoding the same protein have been identified for this gene. This gene encodes a member of the forkhead class of DNA-binding proteins. These hepatocyte nuclear factors are transcriptional activators for liver-specific transcripts such as albumin and transthyretin, and they also interact with chromatin. Similar family members in mice have roles in the regulation of metabolism and in the differentiation of the pancreas and liver. This gene has been linked to sporadic cases of maturity-onset diabetes of the young. Two transcript variants encoding the same protein have been identified for this gene.

Alias Symbols: HNF3B, MGC19807, TCF3B

Protein Interaction Partner: PPARGC1B, GSC, EN2, OTX2, ONECUT1, NCOA1, TLE1, MIP, HOXA5, LHX1,

Protein Size: 457

---

Molecular Weight: 48 kDa

---

Gene ID: 3170

---

NCBI Accession: [NM\\_021784](#), [NP\\_068556](#)

---

UniProt: [Q9Y261](#)

---

Pathways: [Dopaminergic Neurogenesis](#), [Regulation of Carbohydrate Metabolic Process](#)

## Application Details

---

**Application Notes:** Optimal working dilutions should be determined experimentally by the investigator.

---

**Comment:** Antigen size: 457 AA

---

**Restrictions:** For Research Use only

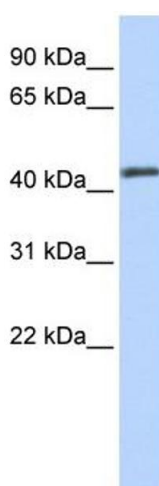
## Handling

Format:	Liquid
Concentration:	Lot specific
Buffer:	Liquid. Purified antibody supplied in 1x PBS buffer with 0.09 % (w/v) sodium azide and 2 % sucrose.
Preservative:	Sodium azide
Precaution of Use:	This product contains Sodium azide: a POISONOUS AND HAZARDOUS SUBSTANCE which should be handled by trained staff only.
Handling Advice:	Avoid repeated freeze-thaw cycles.
Storage:	-20 °C
Storage Comment:	For short term use, store at 2-8°C up to 1 week. For long term storage, store at -20°C in small aliquots to prevent freeze-thaw cycles.

## Publications

Product cited in:	Sun, Zhou, Yin, Ding, Zhong: "Silencing of ZNF217 gene influences the biological behavior of a human ovarian cancer cell line." in: <b>International journal of oncology</b> , Vol. 32, Issue 5, pp. 1065-71, (2008) ( <a href="#">PubMed</a> ).
-------------------	--

## Images



### Western Blotting

**Image 1.** WB Suggested Anti-FOXA2 Antibody Titration: 0.2-1 ug/ml ELISA Titer: 1:12500 Positive Control: HeLa cell lysate



**FOXA2 (ARP31944\_P050)**  
Western Blot  
Sample: human lung tissue protein extracts  
Dilution: 1:1000

Application data in forum

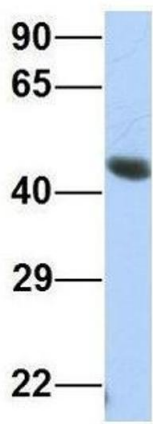
Submitted by:  
Dr. Yingze Zhang  
University of Pittsburgh

- Legend**
- 1. Normal Lung-1 (NL1)
  - 2. Normal Lung-2 (NL2)
  - 3. Normal Lung-3 (NL3)
  - 4. Normal Lung-4 (NL4)
  - 5. Normal Lung-5 (NL5)
  - 6. Normal Lung-6 (NL6)
  - 7. Normal Lung-7 (NL7)
  - 8. Normal Lung-8 (NL8)

### Western Blotting

**Image 2.** Sample Type: Human lung tissue protein extracts  
Primary Dilution: 1:1000  
Secondary (Anti-Rabbit HRP sc-2004) Dilution: 1:1000

## FOXA2



Rabbit Anti-FOXA2  
Sample Type: Human HepG2  
Antibody Concentration: 1ug/mL

### Western Blotting

**Image 3.** Host: Rabbit Target Name: FOXA2  
Sample Type: Human HepG2  
Antibody Dilution: 1.0ug/ml  
FOXA2 is strongly supported by BioGPS gene expression data to be expressed in HepG2

Please check the [product details page](#) for more images. Overall 6 images are available for ABIN2777512.