



[Go to Product page](#)

Datasheet for ABIN2777516
anti-ONECUT1 antibody (C-Term)

4 Images

Overview

Quantity:	100 µL
Target:	ONECUT1
Binding Specificity:	C-Term
Reactivity:	Human, Mouse, Rat, Dog, Rabbit, Cow, Guinea Pig, Horse, Zebrafish (Danio rerio)
Host:	Rabbit
Clonality:	Polyclonal
Conjugate:	This ONECUT1 antibody is un-conjugated
Application:	Western Blotting (WB), Immunohistochemistry (IHC)

Product Details

Sequence:	CKRKEQEHGK DRGNTPKKPR LVFTDVQRRT LHAIFKENKR PSKELQITIS
Predicted Reactivity:	Cow: 100%, Dog: 100%, Guinea Pig: 100%, Horse: 100%, Human: 100%, Mouse: 100%, Rabbit: 100%, Rat: 100%, Zebrafish: 86%
Characteristics:	This is a rabbit polyclonal antibody against Onecut1. It was validated on Western Blot.
Purification:	Affinity Purified

Target Details

Target:	ONECUT1
Alternative Name:	Onecut1 (ONECUT1 Products)
Background:	Onecut1 is a transcriptional activator. It binds the consensus sequence 5'-DHWATTGAYTWWD-

Target Details

3' on a variety of gene promoters such as those of HNF3B and TTR. It is important for liver genes transcription and stimulates the expression of Onecut3 in the developing endoderm.

Alias Symbols: D9Ert423e, Hfh12, Hnf6, Hnf6b, OC-1, Oc1, HNF-6

Protein Size: 465

Molecular Weight: 51 kDa

Gene ID: 15379

NCBI Accession: [NM_008262](#), [NP_032288](#)

UniProt: [O08755](#)

Application Details

Application Notes: Optimal working dilutions should be determined experimentally by the investigator.

Comment: Antigen size: 465 AA

Restrictions: For Research Use only

Handling

Format: Liquid

Concentration: Lot specific

Buffer: Liquid. Purified antibody supplied in 1x PBS buffer with 0.09 % (w/v) sodium azide and 2 % sucrose.

Preservative: Sodium azide

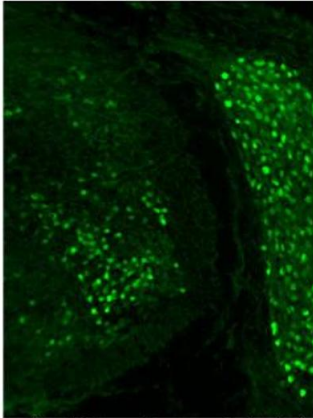
Precaution of Use: This product contains Sodium azide: a POISONOUS AND HAZARDOUS SUBSTANCE which should be handled by trained staff only.

Handling Advice: Avoid repeated freeze-thaw cycles.

Storage: -20 °C

Storage Comment: For short term use, store at 2-8°C up to 1 week. For long term storage, store at -20°C in small aliquots to prevent freeze-thaw cycles.

Onecut1

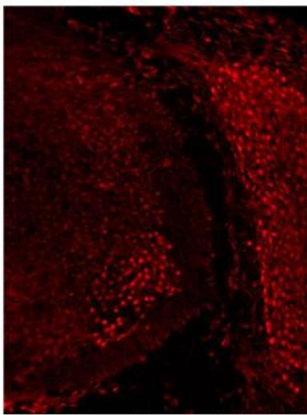


See Immunohistochemistry 1 Data and Customer Feedback tab for more information.

Immunohistochemistry

Image 1.

Onecut1



See Immunohistochemistry 1 Data and Customer Feedback tab for more information.

Immunohistochemistry

Image 2. Sample Type: Frozen section of mouse embryo at et12.5

Primary Dilution: 1:500

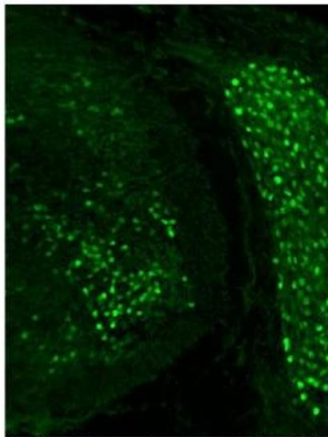
Secondary Dilution: 1:2000

Antigen Retrieval method: Citrate buffer (pH=6)

Image Submitted By: Frédéric Clotman

Université, catholique de Louvain

Onecut1



Immunohistochemistry

Image 3. Immunohistochemistry with mouse embryo tissue

Please check the [product details page](#) for more images. Overall 4 images are available for ABIN2777516.