



Datasheet for ABIN2777529  
**anti-JMJD8 antibody (Middle Region)**



[Go to Product page](#)

3 Images

Overview

Quantity:	100 µL
Target:	JMJD8
Binding Specificity:	Middle Region
Reactivity:	Human, Mouse, Rat, Cow, Dog, Guinea Pig, Horse, Pig
Host:	Rabbit
Clonality:	Polyclonal
Conjugate:	This JMJD8 antibody is un-conjugated
Application:	Western Blotting (WB), Immunohistochemistry (IHC)

Product Details

Immunogen:	The immunogen is a synthetic peptide directed towards the middle region of human LOC339123
Sequence:	FGDRVVRLST ANTYSYHKVD LPFQEYVEQL LHPQDPTSLG NDTLYFFGDN
Predicted Reactivity:	Cow: 77%, Dog: 85%, Guinea Pig: 85%, Horse: 85%, Human: 100%, Mouse: 92%, Pig: 92%, Rat: 92%
Characteristics:	This is a rabbit polyclonal antibody against LOC339123. It was validated on Western Blot and immunohistochemistry.
Purification:	Affinity Purified

Target Details

Target:	JMJD8
---------	-------

## Target Details

---

Alternative Name:	JMJD8 ( <a href="#">JMJD8 Products</a> )
Background:	LOC339123 is a candidate transcription factor located on chromosome 16. Alias Symbols: PP14397, C16orf20 Protein Size: 285
Molecular Weight:	32 kDa
Gene ID:	339123
NCBI Accession:	<a href="#">NM_001005920</a> , <a href="#">NP_001005920</a>
UniProt:	<a href="#">B2RNS7</a>

## Application Details

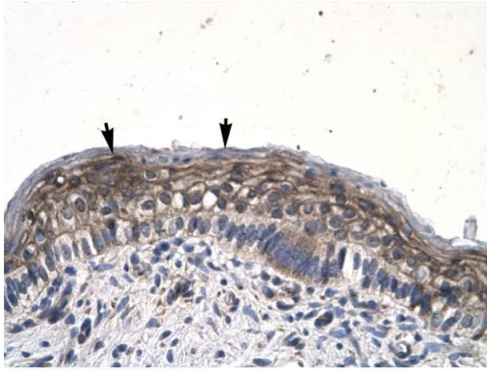
---

Application Notes:	Optimal working dilutions should be determined experimentally by the investigator.
Comment:	Antigen size: 285 AA
Restrictions:	For Research Use only

## Handling

---

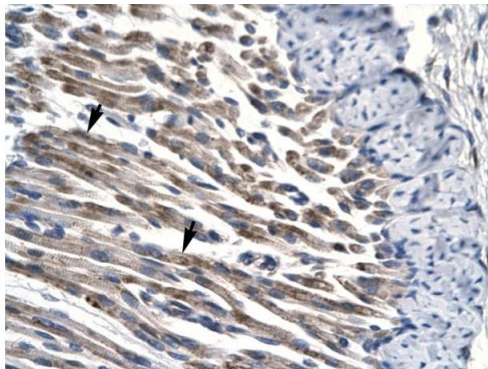
Format:	Liquid
Concentration:	Lot specific
Buffer:	Liquid. Purified antibody supplied in 1x PBS buffer with 0.09 % (w/v) sodium azide and 2 % sucrose.
Preservative:	Sodium azide
Precaution of Use:	This product contains Sodium azide: a POISONOUS AND HAZARDOUS SUBSTANCE which should be handled by trained staff only.
Handling Advice:	Avoid repeated freeze-thaw cycles.
Storage:	-20 °C
Storage Comment:	For short term use, store at 2-8°C up to 1 week. For long term storage, store at -20°C in small aliquots to prevent freeze-thaw cycles.



Rabbit Anti-LOC339123 Antibody  
Catalog Number: ARP31975  
Lot Number: QC1470  
Paraffin Embedded Tissue: Human Spermatophore  
Cells with Positive label: Epithelial cells (Indicated with Arrows)  
Antibody Concentration: 4.0-8.0 µg/ml  
Magnification: 400X

### Immunohistochemistry

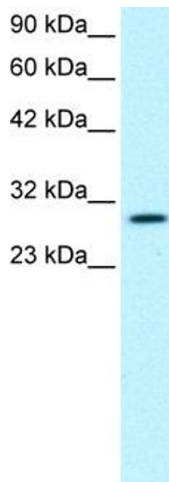
**Image 1.** Human Spermatophore



Rabbit Anti-LOC339123 Antibody  
Catalog Number: ARP31975  
Lot Number: QC1470  
Paraffin Embedded Tissue: Human Muscle  
Cells with Positive label: Skeletal muscle cells (Indicated with Arrows)  
Antibody Concentration: 4.0-8.0 µg/ml  
Magnification: 400X

### Immunohistochemistry

**Image 2.** Human Muscle



### Western Blotting

**Image 3.** WB Suggested Anti-JMJD8 Antibody Titration: 0.2-1 µg/ml ELISA Titer: 1:312500 Positive Control: Jurkat cell lysate