



[Go to Product page](#)

Datasheet for ABIN2777530  
**anti-Mafg antibody (Middle Region)**

4 Images

### Overview

Quantity:	100 µL
Target:	Mafg
Binding Specificity:	Middle Region
Reactivity:	Human, Mouse, Rat, Dog, Cow, Guinea Pig, Horse, Zebrafish (Danio rerio), Pig, Rabbit
Host:	Rabbit
Clonality:	Polyclonal
Conjugate:	This Mafg antibody is un-conjugated
Application:	Western Blotting (WB)

### Product Details

Immunogen:	The immunogen is a synthetic peptide directed towards the middle region of human MAFG
Sequence:	KRVTQKEELE KQKAELQQEV EKLAENASM KLELDALRSK YEALQTFART
Predicted Reactivity:	Cow: 100%, Dog: 100%, Guinea Pig: 93%, Horse: 93%, Human: 100%, Mouse: 100%, Pig: 100%, Rabbit: 79%, Rat: 100%, Zebrafish: 93%
Characteristics:	This is a rabbit polyclonal antibody against MAFG. It was validated on Western Blot using a cell lysate as a positive control.
Purification:	Affinity Purified

### Target Details

Target:	Mafg
---------	------

## Target Details

---

Alternative Name: MAFG ([Mafg Products](#))

---

Background: Since they lack a putative transactivation domain, the small Mafs behave as transcriptional repressors when they dimerize among themselves. However, they seem to serve as transcriptional activators by dimerizing with other (usually larger) basic-zipper proteins and recruiting them to specific DNA-binding sites. Small Maf proteins heterodimerize with Fos and may act as competitive repressors of the NF-E2 transcription factor. Transcription factor, component of erythroid-specific transcription factor NF-E2.

Alias Symbols: MGC13090, MGC20149, hMAF

Protein Interaction Partner: NFE2L2, PARP1, MAFG, DDIT3, BACH1, ATF3, BACH2, BATF3, MAFF, NFE2L3, NFIL3, NFE2L1, PIDD1, UBC, SNRPN, HSP90AA1, HIF1A, CYP2E1, SUMO1, SUMO2, SUMO3, PPP1CA, GTF2A1L, MED31, RBM48, CHD3, NFE2, PAX6, CREBBP, VIM, MAF, PRRX1, HOXD12,

Protein Size: 162

---

Molecular Weight: 18 kDa

---

Gene ID: 4097

---

NCBI Accession: [NM\\_002359](#), [NP\\_002350](#)

---

UniProt: [O15525](#)

---

## Application Details

---

Application Notes: Optimal working dilutions should be determined experimentally by the investigator.

---

Comment: Antigen size: 162 AA

---

Restrictions: For Research Use only

---

## Handling

---

Format: Liquid

---

Concentration: Lot specific

---

Buffer: Liquid. Purified antibody supplied in 1x PBS buffer with 0.09 % (w/v) sodium azide and 2 % sucrose.

---

Preservative: Sodium azide

---

Precaution of Use: This product contains Sodium azide: a POISONOUS AND HAZARDOUS SUBSTANCE which should be handled by trained staff only.

---

## Handling

Handling Advice: Avoid repeated freeze-thaw cycles.

Storage: -20 °C

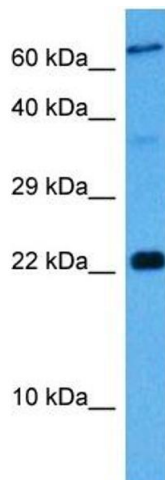
Storage Comment: For short term use, store at 2-8°C up to 1 week. For long term storage, store at -20°C in small aliquots to prevent freeze-thaw cycles.

## Images



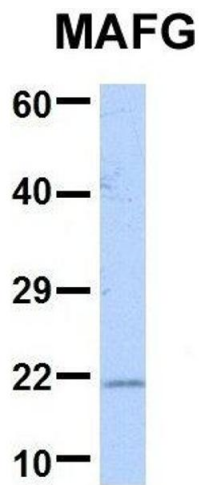
### Western Blotting

**Image 1.** WB Suggested Anti-MAFG Antibody Titration: 0.2-1 ug/ml ELISA Titer: 1:62500 Positive Control: Jurkat cell lysate



### Western Blotting

**Image 2.** Host: Mouse Target Name: MAFK Sample Tissue: Mouse Liver Antibody Dilution: 1ug/ml



#### Western Blotting

**Image 3.** Host: Rabbit Target Name: MAFG Sample Type: 293T Antibody Dilution: 1.0ug/ml MAFG is supported by BioGPS gene expression data to be expressed in HEK293T

Please check the [product details page](#) for more images. Overall 4 images are available for ABIN2777530.