

Datasheet for ABIN2777531
anti-Mars (MARS) (Middle Region) antibody[Go to Product page](#)[1 Image](#)[1 Publication](#)

Overview

Quantity:	100 µL
Target:	Mars (MARS)
Binding Specificity:	Middle Region
Reactivity:	Human, Mouse, Rat, Cow, Dog, Rabbit, Zebrafish (Danio rerio), Guinea Pig, Horse, Pig
Host:	Rabbit
Clonality:	Polyclonal
Conjugate:	Un-conjugated
Application:	Western Blotting (WB)

Product Details

Immunogen:	The immunogen is a synthetic peptide directed towards the middle region of human MARS
Sequence:	GHQIGTVSPL FQKLENDQIE SLRQRFGGGQ AKTSPKPAVV ETVTTAKPQQ
Predicted Reactivity:	Cow: 100%, Dog: 100%, Guinea Pig: 93%, Horse: 93%, Human: 100%, Mouse: 93%, Pig: 100%, Rabbit: 100%, Rat: 100%, Zebrafish: 93%
Characteristics:	This is a rabbit polyclonal antibody against MARS. It was validated on Western Blot using a cell lysate as a positive control.
Purification:	Affinity Purified

Target Details

Target:	Mars (MARS)
---------	-------------

Target Details

Abstract:	MARS Products
Background:	<p>Aminoacyl-tRNA synthetases are a class of enzymes that charge tRNAs with their cognate amino acids. MARS belongs to the class I family of tRNA synthetases. Aminoacyl-tRNA synthetases are a class of enzymes that charge tRNAs with their cognate amino acids. The protein encoded by this gene belongs to the class I family of tRNA synthetases. Publication Note: This RefSeq record includes a subset of the publications that are available for this gene. Please see the Entrez Gene record to access additional publications.</p> <p>Alias Symbols: FLJ35667, METRS, MTRNS, MRS</p> <p>Protein Interaction Partner: HUWE1, UBC, SUMO2, SUMO3, RNF2, EEF1E1, AIMP1, AIMP2, RPLP0, RPL27A, RPL13, QARS, EIF2S1, DARS, IARS, FBXO6, EGFR, ITGA4, FN1, gag, CASK, VCAM1, CCT3, LARS, RARS, KARS, EPRS, ACAT1, CUL1, CUL3, FBXO25, CDK9, TNNT1, RPS27, HDAC5, MYC, HNRNPUL1, PPM1F, MAPK</p> <p>Protein Size: 900</p>
Molecular Weight:	101 kDa
Gene ID:	4141
NCBI Accession:	NM_004990 , NP_004981
UniProt:	P56192

Application Details

Application Notes:	Optimal working dilutions should be determined experimentally by the investigator.
Comment:	Antigen size: 900 AA
Restrictions:	For Research Use only

Handling

Format:	Liquid
Concentration:	Lot specific
Buffer:	Liquid. Purified antibody supplied in 1x PBS buffer with 0.09 % (w/v) sodium azide and 2 % sucrose.
Preservative:	Sodium azide
Precaution of Use:	This product contains Sodium azide: a POISONOUS AND HAZARDOUS SUBSTANCE which should be handled by trained staff only.

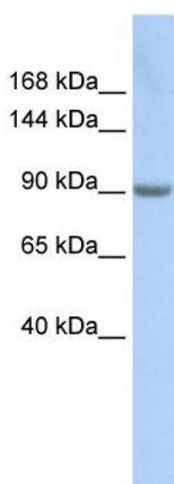
Handling

Handling Advice:	Avoid repeated freeze-thaw cycles.
Storage:	-20 °C
Storage Comment:	For short term use, store at 2-8°C up to 1 week. For long term storage, store at -20°C in small aliquots to prevent freeze-thaw cycles.

Publications

Product cited in:	Lazrek, Goffard, Schanen, Karquel, Bocket, Lion, Devaux, Hedouin, Gosset, Hober: "Detection of hepatitis C virus antibodies and RNA among medicolegal autopsy cases in Northern France." in: Diagnostic microbiology and infectious disease , Vol. 55, Issue 1, pp. 55-8, (2006) (PubMed).
-------------------	---

Images



Western Blotting

Image 1. WB Suggested Anti-MARS Antibody Titration: 0.2-1 ug/ml ELISA Titer: 1:12500 Positive Control: Hela cell lysate