

Datasheet for ABIN2777532
anti-MBD1 antibody (C-Term)

3 Images

[Go to Product page](#)

Overview

Quantity:	100 µL
Target:	MBD1
Binding Specificity:	C-Term
Reactivity:	Human, Rat, Dog, Rabbit, Cow, Guinea Pig, Horse
Host:	Rabbit
Clonality:	Polyclonal
Conjugate:	This MBD1 antibody is un-conjugated
Application:	Western Blotting (WB), Immunohistochemistry (IHC)

Product Details

Sequence:	EEDKEENKDD SASKLAPEEE AGGAGTPVIT EIFSLGGTRF RDTAVWLPRS
Predicted Reactivity:	Cow: 100%, Dog: 100%, Guinea Pig: 100%, Horse: 100%, Human: 100%, Rabbit: 100%, Rat: 100%
Characteristics:	This is a rabbit polyclonal antibody against MBD1. It was validated on Western Blot.
Purification:	Affinity Purified

Target Details

Target:	MBD1
Alternative Name:	MBD1 (MBD1 Products)
Background:	The protein encoded by this gene is a member of a family of nuclear proteins related by the presence of a methyl-CpG binding domain (MBD). These proteins are capable of binding

Target Details

specifically to methylated DNA, and some members can also repress transcription from methylated gene promoters. This protein contains multiple domains: MBD at the N-terminus that functions both in binding to methylated DNA and in protein interactions, several CXXC-type zinc finger domains that mediate binding to non-methylated CpG dinucleotides, transcriptional repression domain (TRD) at the C-terminus that is involved in transcription repression and in protein interactions. Numerous alternatively spliced transcript variants encoding different isoforms have been noted for this gene.

Alias Symbols: CXXC3, PCM1, RFT

Protein Interaction Partner: SUMO1, HTT, UBC, ECT2, APP, ATXN1L, TENM1, SUMO2, HIST1H3A, PCNA, ATF7IP2, ATF7IP, CHAF1A, SETDB1, PIAS1, STAT1, PRAM1, HDAC3, PIAS2, ZNF512B, Rnf2, CBX4, CBX5, HIPK3, SMAD9, OASL, SMAD5, SMAD3, SMAD7, SMAD1, SUV39H1,
Protein Size: 629

Molecular Weight: 69 kDa

Gene ID: 4152

NCBI Accession: [NM_001204138](#), [NP_001191067](#)

UniProt: [Q9UIS9](#)

Application Details

Application Notes: Optimal working dilutions should be determined experimentally by the investigator.

Comment: Antigen size: 629 AA

Restrictions: For Research Use only

Handling

Format: Liquid

Concentration: Lot specific

Buffer: Liquid. Purified antibody supplied in 1x PBS buffer with 0.09 % (w/v) sodium azide and 2 % sucrose.

Preservative: Sodium azide

Precaution of Use: This product contains Sodium azide: a POISONOUS AND HAZARDOUS SUBSTANCE which should be handled by trained staff only.

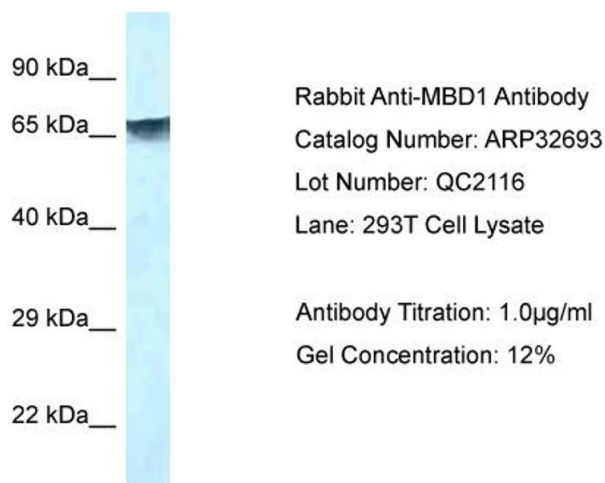
Handling

Handling Advice: Avoid repeated freeze-thaw cycles.

Storage: -20 °C

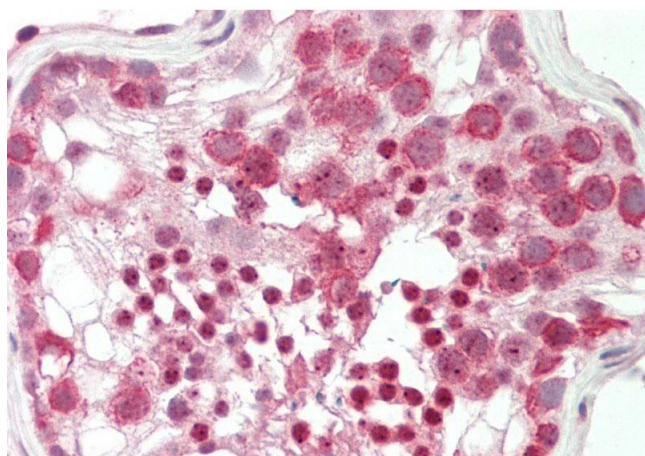
Storage Comment: For short term use, store at 2-8°C up to 1 week. For long term storage, store at -20°C in small aliquots to prevent freeze-thaw cycles.

Images



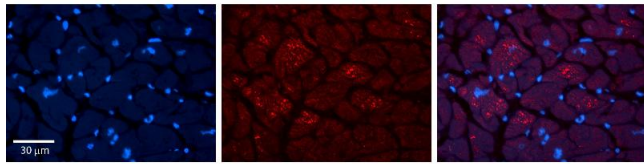
Western Blotting

Image 1. WB Suggested Anti-MBD1 Antibody Titration: 1.0 µg/ml Positive Control: 293T Whole Cell MBD1 is strongly supported by BioGPS gene expression data to be expressed in Human HEK293T cells



Immunohistochemistry

Image 2. Rabbit Anti-MBD1 antibody Formalin Fixed Paraffin Embedded Tissue: Human Testis Primary antibody Concentration: 1:100 Secondary Antibody: Donkey anti-Rabbit-Cy3 Secondary Antibody Concentration: 1:200 Magnification: 20x Exposure Time: 0.5-2.0sec



Immunohistochemistry

Image 3. Rabbit Anti-MBD1 Antibody Formalin Fixed Paraffin Embedded Tissue: Human heart Tissue Observed Staining: Cytoplasmic Primary Antibody Concentration: 1:100 Other Working Concentrations: 1:600 Secondary Antibody: Donkey anti-Rabbit-Cy3 Secondary Antibody Concentration: 1:200 Magnification: 20X Exposure Time: 0.5 - 2.0 sec