

Datasheet for ABIN2777538  
**anti-MYBL1 antibody (Middle Region)**[Go to Product page](#)

## 2 Images

## Overview

Quantity:	100 µL
Target:	MYBL1
Binding Specificity:	Middle Region
Reactivity:	Human, Mouse, Rat, Dog, Cow, Horse, Guinea Pig, Rabbit, Zebrafish (Danio rerio)
Host:	Rabbit
Clonality:	Polyclonal
Conjugate:	This MYBL1 antibody is un-conjugated
Application:	Western Blotting (WB), Immunohistochemistry (IHC)

## Product Details

Immunogen:	The immunogen is a synthetic peptide directed towards the middle region of human MYBL1
Sequence:	PRTPTPFKNA LAAQEKKYGP LKIVSQPLAF LEEDIREVLK EETGTDLFLK
Predicted Reactivity:	Cow: 100%, Dog: 100%, Guinea Pig: 100%, Horse: 100%, Human: 100%, Mouse: 100%, Rabbit: 100%, Rat: 100%, Zebrafish: 92%
Characteristics:	This is a rabbit polyclonal antibody against MYBL1. It was validated on Western Blot and immunohistochemistry.
Purification:	Protein A purified

## Target Details

Target:	MYBL1
---------	-------

## Target Details

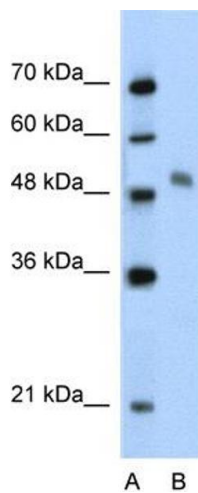
Alternative Name:	MYBL1 ( <a href="#">MYBL1 Products</a> )
Background:	<p>MYBL1 is strong transcriptional activator, DNA-binding protein that specifically recognize the sequence 5'-YAAC[GT]G-3'. It could have a role in the proliferation and/or differentiation of neurogenic, spermatogenic and B-lymphoid cells.</p> <p>Alias Symbols: A-MYB, AMYB, MGC120059, MGC120061</p> <p>Protein Interaction Partner: UBC, CREBBP, Lin54, LIN9, LIN37, NLK, HIPK2, NCL,</p> <p>Protein Size: 446</p>
Molecular Weight:	49 kDa
Gene ID:	4603
NCBI Accession:	<a href="#">XM_943525</a> , <a href="#">XP_948618</a>
Pathways:	<a href="#">Cell Division Cycle</a> , <a href="#">Chromatin Binding</a>

## Application Details

Application Notes:	Optimal working dilutions should be determined experimentally by the investigator.
Comment:	Antigen size: 446 AA
Restrictions:	For Research Use only

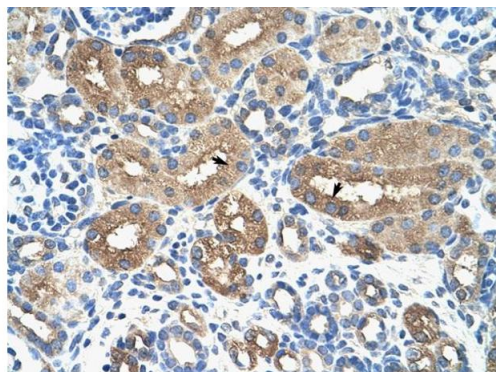
## Handling

Format:	Liquid
Concentration:	Lot specific
Buffer:	Liquid. Purified antibody supplied in 1x PBS buffer with 0.09 % (w/v) sodium azide and 2 % sucrose.
Preservative:	Sodium azide
Precaution of Use:	This product contains Sodium azide: a POISONOUS AND HAZARDOUS SUBSTANCE which should be handled by trained staff only.
Handling Advice:	Avoid repeated freeze-thaw cycles.
Storage:	-20 °C
Storage Comment:	For short term use, store at 2-8°C up to 1 week. For long term storage, store at -20°C in small aliquots to prevent freeze-thaw cycles.



### Western Blotting

**Image 1.** WB Suggested Anti-MYBL1 Antibody Titration:  
2.5ug/ml Positive Control: Jurkat cell lysate



Rabbit Anti-MYBL1 Antibody  
Catalog Number: ARP32707  
Lot Number: QC11892  
Paraffin Embedded Tissue: Human Kidney  
Cells with Positive label: Epithelial cells of renal tubule (Indicated with Arrows)  
Antibody Concentration: 4.0-8.0 µg/ml  
Magnification: 400X

### Immunohistochemistry

**Image 2.** Human kidney