



[Go to Product page](#)

Datasheet for ABIN2777540  
**anti-MYT1 antibody (N-Term)**

3 Images

### Overview

Quantity:	100 µL
Target:	MYT1
Binding Specificity:	N-Term
Reactivity:	Human, Mouse, Rat, Cow, Guinea Pig, Horse, Dog, Rabbit
Host:	Rabbit
Clonality:	Polyclonal
Conjugate:	This MYT1 antibody is un-conjugated
Application:	Western Blotting (WB), Immunohistochemistry (IHC)

### Product Details

Immunogen:	The immunogen is a synthetic peptide directed towards the N terminal region of human MYT1
Sequence:	CTGSGHVGRGK YSRHRSLQSC PLAKKRKLEG AEAHLVSKR KSHPLKLALD
Predicted Reactivity:	Cow: 85%, Dog: 92%, Guinea Pig: 85%, Horse: 100%, Human: 100%, Mouse: 85%, Rabbit: 92%, Rat: 100%
Characteristics:	This is a rabbit polyclonal antibody against MYT1. It was validated on Western Blot using a cell lysate as a positive control.
Purification:	Affinity Purified

### Target Details

Target:	MYT1
---------	------

## Target Details

---

Alternative Name:	MYT1 ( <a href="#">MYT1 Products</a> )
Background:	<p>The protein encoded by this gene is a member of a family of neural specific, zinc finger-containing DNA-binding proteins. The protein binds to the promoter regions of proteolipid proteins of the central nervous system and plays a role in the developing ne</p> <p>Alias Symbols: C20orf36, MTF1, MYTI, PLPB1</p> <p>Protein Interaction Partner: TRAF3, SIN3B, HDAC1, PLK1, CDK1, PIN1,</p> <p>Protein Size: 1121</p>
Molecular Weight:	122 kDa
Gene ID:	4661
NCBI Accession:	<a href="#">NM_004535</a> , <a href="#">NP_004526</a>
UniProt:	<a href="#">Q01538</a>
Pathways:	<a href="#">Cell Division Cycle</a>

## Application Details

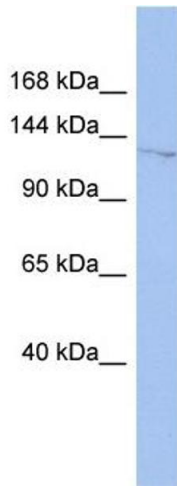
---

Application Notes:	Optimal working dilutions should be determined experimentally by the investigator.
Comment:	Antigen size: 1121 AA
Restrictions:	For Research Use only

## Handling

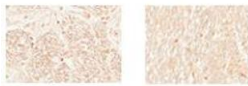
---

Format:	Liquid
Concentration:	Lot specific
Buffer:	Liquid. Purified antibody supplied in 1x PBS buffer with 0.09 % (w/v) sodium azide and 2 % sucrose.
Preservative:	Sodium azide
Precaution of Use:	This product contains Sodium azide: a POISONOUS AND HAZARDOUS SUBSTANCE which should be handled by trained staff only.
Handling Advice:	Avoid repeated freeze-thaw cycles.
Storage:	-20 °C
Storage Comment:	For short term use, store at 2-8°C up to 1 week. For long term storage, store at -20°C in small aliquots to prevent freeze-thaw cycles.



### Western Blotting

**Image 1.** WB Suggested Anti-MYT1 Antibody Titration: 0.2-1 ug/ml ELISA Titer: 1:62500 Positive Control: THP-1 cell lysate



IHC- PZ

IHC- P

### MYT1 (ARP32711\_P050)

Sample: human optic nerve and/or spinal cord

Cellular target: oligodendrocyte lineage cells

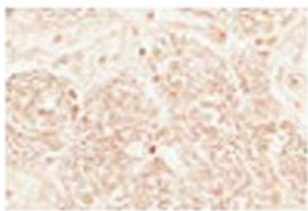
Dilution: 1:1,000

Application data in forum

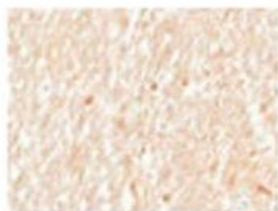
Submitted by:  
Alison Jenning  
University of Western Australia  
School of Pathology & Lab Med

### Image 2.

Sample Type: Human Optic Nerve and Spinal Cord Cellular Target: Oligodendrocyte Lineage cells Dilution: 1:1000



IHC- PZ



IHC- P

### Immunohistochemistry

**Image 3.** Sample Type: Human Optic Nerve and Spinal Cord Cellular Target: Oligodendrocyte Lineage cells Dilution: 1:1000