

Datasheet for ABIN2777545
anti-NFIX antibody (Middle Region)[Go to Product page](#)

3 Images

Overview

Quantity:	100 µL
Target:	NFIX (MLZE)
Binding Specificity:	Middle Region
Reactivity:	Human, Rat, Mouse, Dog, Rabbit, Cow, Zebrafish (Danio rerio), Guinea Pig, Horse
Host:	Rabbit
Clonality:	Polyclonal
Conjugate:	This NFIX antibody is un-conjugated
Application:	Western Blotting (WB), Immunohistochemistry (IHC)

Product Details

Immunogen:	The immunogen is a synthetic peptide directed towards the middle region of human NFIX
Sequence:	YFVHTPESGQ SDSSNQQGDA DIKPLPNGHL SFQDCFVTSG VWNVTELV RV
Predicted Reactivity:	Cow: 100%, Dog: 100%, Guinea Pig: 100%, Horse: 100%, Human: 100%, Mouse: 100%, Rabbit: 100%, Rat: 100%, Zebrafish: 93%
Characteristics:	This is a rabbit polyclonal antibody against NFIX. It was validated on Western Blot using a cell lysate as a positive control.
Purification:	Affinity Purified

Target Details

Target:	NFIX (MLZE)
---------	-------------

Target Details

Alternative Name:	NFIX (MLZE Products)
Background:	<p>Nuclear factor I (NFI) proteins constitute a family of sequence-specific transcription factors whose functional diversity is generated through transcription from four different genes (NFI-A, NFI-B, NFI-C, and NFI-X), alternative RNA splicing, and protein heterodimerization. NFI-X has divergent functions after binding in promoter or enhancer position. This property, combined with the differential expression of NFI-X, can achieve cell-type specificity of NFI dependent promoters and enhancers.</p> <p>Alias Symbols: NF1A</p> <p>Protein Interaction Partner: QRIC1, NFIX, ZNF614, SUMO1, UBC, NEDD8, JMJD6, ISG15, NFIB, PIR, RFX1, SKI, RB1, HDAC1,</p> <p>Protein Size: 441</p>
Molecular Weight:	49 kDa
Gene ID:	4784
NCBI Accession:	NM_002501 , NP_002492
Pathways:	Skeletal Muscle Fiber Development

Application Details

Application Notes:	Optimal working dilutions should be determined experimentally by the investigator.
Comment:	Antigen size: 441 AA
Restrictions:	For Research Use only

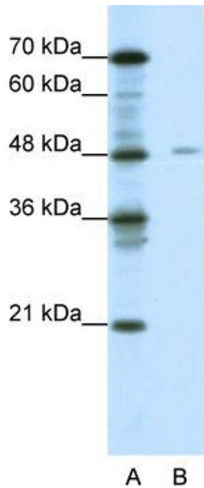
Handling

Format:	Liquid
Concentration:	Lot specific
Buffer:	Liquid. Purified antibody supplied in 1x PBS buffer with 0.09 % (w/v) sodium azide and 2 % sucrose.
Preservative:	Sodium azide
Precaution of Use:	This product contains Sodium azide: a POISONOUS AND HAZARDOUS SUBSTANCE which should be handled by trained staff only.
Handling Advice:	Avoid repeated freeze-thaw cycles.

Handling

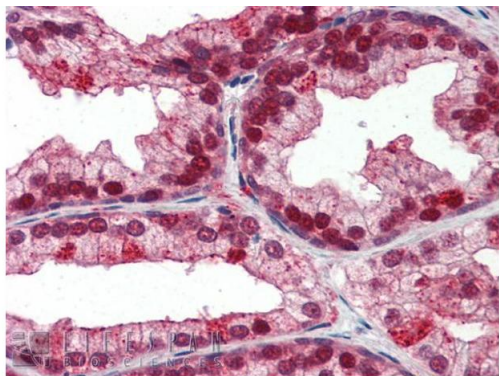
Storage:	-20 °C
Storage Comment:	For short term use, store at 2-8°C up to 1 week. For long term storage, store at -20°C in small aliquots to prevent freeze-thaw cycles.

Images



Western Blotting

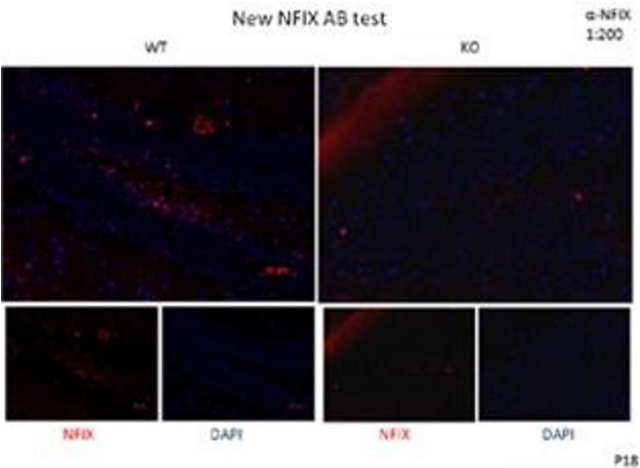
Image 1. WB Suggested Anti-NFIX Antibody Titration: 0.2-1 ug/ml ELISA Titer: 1:312500 Positive Control: Jurkat cell lysate



Rabbit Anti-NFIX Antibody
Catalog Number: ARP32717
Lot Number: QC7415
Paraffin Embedded Tissue: Human Prostate
Antibody Concentration: 5.0 µg/ml
Data courtesy of Lifespan Biosciences, Inc.

Immunohistochemistry

Image 2. Immunohistochemistry with Human Prostate lysate tissue at an antibody concentration of 5.0ug/ml using anti-NFIX antibody



Immunohistochemistry

Image 3. DG of Hippocampus Dilution: 1:200