

Datasheet for ABIN2777547
anti-NKX6-1 antibody (N-Term)[Go to Product page](#)

2 Images

Overview

Quantity:	100 µL
Target:	NKX6-1
Binding Specificity:	N-Term
Reactivity:	Human, Mouse, Rat, Pig, Rabbit, Dog, Horse, Cow, Zebrafish (Danio rerio)
Host:	Rabbit
Clonality:	Polyclonal
Conjugate:	This NKX6-1 antibody is un-conjugated
Application:	Western Blotting (WB)

Product Details

Immunogen:	The immunogen is a synthetic peptide directed towards the N terminal region of human NKX6-1
Sequence:	MLAVGAMEGT RQSAFLSSP PLAALHSM AE MKTPLYPAA Y PPLPAGPPSS
Predicted Reactivity:	Cow: 100%, Dog: 100%, Horse: 100%, Human: 100%, Mouse: 100%, Pig: 100%, Rabbit: 100%, Rat: 100%, Zebrafish: 86%
Characteristics:	This is a rabbit polyclonal antibody against NKX6-1. It was validated on Western Blot using a cell lysate as a positive control.
Purification:	Affinity Purified

Target Details

Target:	NKX6-1
---------	--------

Target Details

Alternative Name:	NKX6-1 (NKX6-1 Products)
Background:	<p>NKX6-1 is the transcription factor which binds to specific A/T-rich DNA sequences in the promoter regions of a number of genes. NKX6-1 is involved in transcriptional regulation in islet beta cells. Binds to the insulin promoter and is involved in regulation of the insulin gene. Together with NKX2-2 and IRX3, NKX6-1 acts to restrict the generation of motor neurons to the appropriate region of the neural tube. NKX6-1 belongs to the class II proteins of neuronal progenitor factors, which are induced by SHH signals. In the pancreas, NKX6.1 is required for the development of beta cells and is a potent bifunctional transcription regulator that binds to AT-rich sequences within the promoter region of target genes lype et al. (2004) [PubMed 15056733]. [supplied by OMIM]. PRIMARYREFSEQ_SPAN PRIMARY_IDENTIFIER PRIMARY_SPAN COMP 1-300 U66797.1 1-300 301-307 AC096766.3 119394-119400 c 308-676 U66797.1 308-676 677-849 U66798.1 7-179 850-1116 U66799.1 7-273</p> <p>Alias Symbols: NKX6.1, NKX6A</p> <p>Protein Size: 367</p>
Molecular Weight:	38 kDa
Gene ID:	4825
NCBI Accession:	NM_006168 , NP_006159
UniProt:	P78426
Pathways:	Dopaminergic Neurogenesis , Positive Regulation of Peptide Hormone Secretion

Application Details

Application Notes:	Optimal working dilutions should be determined experimentally by the investigator.
Comment:	Antigen size: 367 AA
Restrictions:	For Research Use only

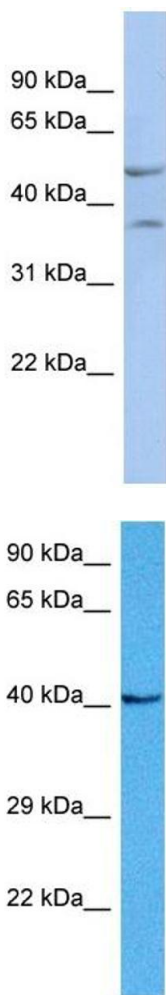
Handling

Format:	Liquid
Concentration:	Lot specific
Buffer:	Liquid. Purified antibody supplied in 1x PBS buffer with 0.09 % (w/v) sodium azide and 2 % sucrose.
Preservative:	Sodium azide

Handling

Precaution of Use:	This product contains Sodium azide: a POISONOUS AND HAZARDOUS SUBSTANCE which should be handled by trained staff only.
Handling Advice:	Avoid repeated freeze-thaw cycles.
Storage:	-20 °C
Storage Comment:	For short term use, store at 2-8°C up to 1 week. For long term storage, store at -20°C in small aliquots to prevent freeze-thaw cycles.

Images



Western Blotting

Image 1. WB Suggested Anti-NKX6-1 Antibody Titration: 0.2-1 ug/ml ELISA Titer: 1:62500 Positive Control: Human Small Intestine

Western Blotting

Image 2. Host: Mouse Target Name: NKX6-1 Sample Tissue: Mouse Liver Antibody Dilution: 1ug/ml