

Datasheet for ABIN2777550
anti-NOTCH4 antibody (Middle Region)[Go to Product page](#)

4 Images

3 Publications

Overview

Quantity:	100 µL
Target:	NOTCH4
Binding Specificity:	Middle Region
Reactivity:	Human, Rat, Cow, Horse, Guinea Pig, Pig
Host:	Rabbit
Clonality:	Polyclonal
Conjugate:	This NOTCH4 antibody is un-conjugated
Application:	Western Blotting (WB), Immunohistochemistry (IHC)

Product Details

Immunogen:	The immunogen is a synthetic peptide directed towards the middle region of human NOTCH4
Sequence:	LLLGLGAARE LRDQAGLAPA DVAHQRNHWD LLTLLEGAGP PEARHKATPG
Predicted Reactivity:	Cow: 100%, Guinea Pig: 86%, Horse: 100%, Human: 100%, Pig: 100%, Rat: 93%
Characteristics:	This is a rabbit polyclonal antibody against NOTCH4. It was validated on Western Blot using a cell lysate as a positive control.
Purification:	Affinity Purified

Target Details

Target:	NOTCH4
Alternative Name:	NOTCH4 (NOTCH4 Products)

Target Details

Background:	<p>NOTCH4 is a member of the Notch family. Members of this Type 1 transmembrane protein family share structural characteristics including an extracellular domain consisting of multiple epidermal growth factor-like (EGF) repeats, and an intracellular domain consisting of multiple, different domain types. Notch family members play a role in a variety of developmental processes by controlling cell fate decisions. The Notch signaling network is an evolutionarily conserved intercellular signaling pathway which regulates interactions between physically adjacent cells. NOTCH4 is cleaved in the trans-Golgi network, and presented on the cell surface as a heterodimer. NOTCH4 functions as a receptor for membrane bound ligands, and may play a role in vascular, renal and hepatic development. NOTCH4 gene may be associated with susceptibility to schizophrenia in a small portion of cases.</p> <p>Alias Symbols: INT3, NOTCH4</p> <p>Protein Interaction Partner: EGFL7, Dlg4, SMAD4, SMAD3, SMAD2, TCEB1, UBC, TP53, MDM2, MAML3, MAML2, FBXW7, MAML1, DLL4, PSEN2, NOTCH4, RBPJ, PSEN1,</p> <p>Protein Size: 589</p>
Molecular Weight:	61 kDa
Gene ID:	4855
Pathways:	Notch Signaling

Application Details

Application Notes:	Optimal working dilutions should be determined experimentally by the investigator.
Comment:	Antigen size: 589 AA
Restrictions:	For Research Use only

Handling

Format:	Liquid
Concentration:	Lot specific
Buffer:	Liquid. Purified antibody supplied in 1x PBS buffer with 0.09 % (w/v) sodium azide and 2 % sucrose.
Preservative:	Sodium azide
Precaution of Use:	This product contains Sodium azide: a POISONOUS AND HAZARDOUS SUBSTANCE which should be handled by trained staff only.

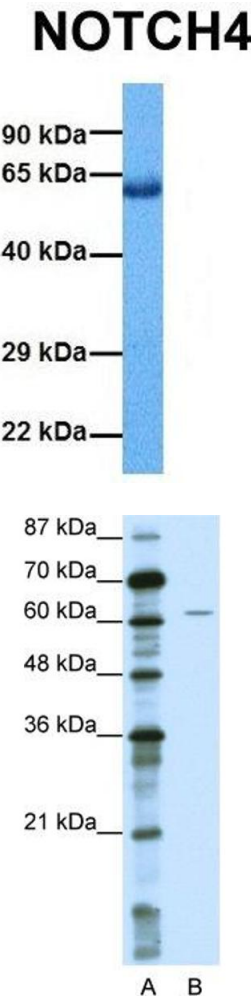
Handling

Handling Advice:	Avoid repeated freeze-thaw cycles.
Storage:	-20 °C
Storage Comment:	For short term use, store at 2-8°C up to 1 week. For long term storage, store at -20°C in small aliquots to prevent freeze-thaw cycles.

Publications

Product cited in:	Coyne, Gambling, Boucher, Carson, Johnson: "Role of claudin interactions in airway tight junctional permeability." in: American journal of physiology. Lung cellular and molecular physiology , Vol. 285, Issue 5, pp. L1166-78, (2003) (PubMed).
-------------------	--

Images

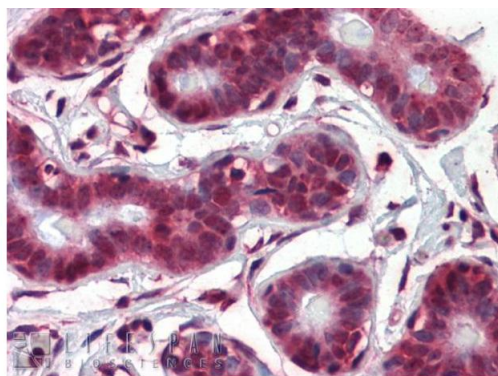


Western Blotting

Image 1. Host: Rabbit Target Name: NOTCH4 Sample
Tissue: Human Lung Tumor Antibody Dilution: 1.0ug/ml

Western Blotting

Image 2. WB Suggested Anti-NOTCH4 Antibody Titration:
0.2-1 ug/ml ELISA Titer: 1:312500 Positive Control: Jurkat
cell lysate



Rabbit Anti-NOTCH4 Antibody
Catalog Number: ARP32726
Lot Number: QC7418
Paraffin Embedded Tissue: Human Breast
Antibody Concentration: 5.0 µg/ml

Data courtesy of Lifespan Biosciences, Inc.

Immunohistochemistry

Image 3. Immunohistochemistry with Human Breast tissue at an antibody concentration of 5.0ug/ml using anti-NOTCH4 antibody

Please check the [product details page](#) for more images. Overall 4 images are available for ABIN2777550.