

Datasheet for ABIN2777558  
**anti-MYEF2 antibody (Middle Region)**



[Go to Product page](#)

5 Images

Overview

Quantity:	100 µL
Target:	MYEF2
Binding Specificity:	Middle Region
Reactivity:	Human, Mouse, Rat, Dog, Cow, Horse, Rabbit, Guinea Pig, Zebrafish (Danio rerio)
Host:	Rabbit
Clonality:	Polyclonal
Conjugate:	This MYEF2 antibody is un-conjugated
Application:	Western Blotting (WB), Immunohistochemistry (IHC)

Product Details

Immunogen:	The immunogen is a synthetic peptide directed towards the middle region of human MYEF2
Sequence:	QAGRLGSTIF VANLDFKVGW KKLKEVFSIA GTVKRADIKE DKDGKSRGMG
Predicted Reactivity:	Cow: 100%, Dog: 100%, Guinea Pig: 100%, Horse: 100%, Human: 100%, Mouse: 100%, Rabbit: 100%, Rat: 100%, Zebrafish: 85%
Characteristics:	This is a rabbit polyclonal antibody against MYEF2. It was validated on Western Blot and immunohistochemistry.
Purification:	Affinity Purified

Target Details

Target:	MYEF2
---------	-------

## Target Details

---

Alternative Name:	MYEF2 ( <a href="#">MYEF2 Products</a> )
Background:	<p>MEF-2 is expressed early in the differentiation program and is suppressed by specific polypeptide growth factors. The ability of MEF-2 to recognize conserved activating elements associated with multiple-specific genes suggests that this factor may participate in the coordinate regulation of genes during myogenesis.</p> <p>Alias Symbols: MEF-2, MST156, MSTP156, HsT18564</p> <p>Protein Interaction Partner: COG8, TEX11, TRAF1, GOLGA2, UBC, EED, RNF2, BMI1, SOX2, CDK19, SIRT7, TADA2A, ATXN1, PPARGC1A, HDAC5, MAPK14, tat, SMARCA4,</p> <p>Protein Size: 600</p>
Molecular Weight:	64 kDa
Gene ID:	50804
NCBI Accession:	<a href="#">NM_016132</a> , <a href="#">NP_057216</a>
UniProt:	<a href="#">Q9P2K5</a>

## Application Details

---

Application Notes:	Optimal working dilutions should be determined experimentally by the investigator.
Comment:	Antigen size: 600 AA
Restrictions:	For Research Use only

## Handling

---

Format:	Liquid
Concentration:	Lot specific
Buffer:	Liquid. Purified antibody supplied in 1x PBS buffer with 0.09 % (w/v) sodium azide and 2 % sucrose.
Preservative:	Sodium azide
Precaution of Use:	This product contains Sodium azide: a POISONOUS AND HAZARDOUS SUBSTANCE which should be handled by trained staff only.
Handling Advice:	Avoid repeated freeze-thaw cycles.
Storage:	-20 °C
Storage Comment:	For short term use, store at 2-8°C up to 1 week. For long term storage, store at -20°C in small

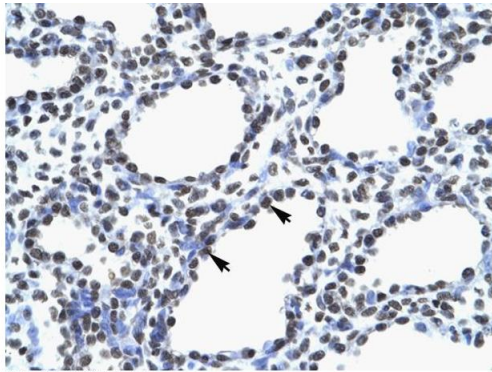
aliquots to prevent freeze-thaw cycles.

Images



Western Blotting

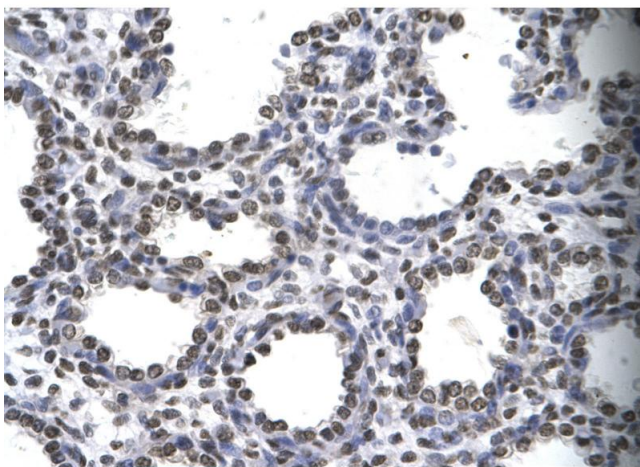
**Image 1.** WB Suggested Anti-MYEF2 Antibody Titration: 0.2-1 ug/ml Positive Control: Jurkat cell lysate



Rabbit Anti-MYEF2 Antibody  
Catalog Number: ARP32738  
Lot Number: QC2149  
Paraffin Embedded Tissue: Human Lung  
Cells with Positive label: Alveolar cells (Indicated with Arrows)  
Antibody Concentration: 4.0-8.0 ug/ml  
Magnification: 400X

Immunohistochemistry

**Image 2.** Human Lung



Immunohistochemistry

**Image 3.** Rabbit Anti-MYEF2 Antibody Paraffin Embedded Tissue: Human alveolar cell Cellular Data: Epithelial cells of renal tubule Antibody Concentration: 4.0-8.0 ug/ml Magnification: 400X

Please check the [product details page](#) for more images. Overall 5 images are available for ABIN2777558.