

Datasheet for ABIN2777569

**anti-IKZF1 antibody (Middle Region)**[Go to Product page](#)**2** Images

## Overview

Quantity:	100 µL
Target:	IKZF1
Binding Specificity:	Middle Region
Reactivity:	Human, Dog
Host:	Rabbit
Clonality:	Polyclonal
Conjugate:	This IKZF1 antibody is un-conjugated
Application:	Western Blotting (WB), Immunohistochemistry (IHC)

## Product Details

Immunogen:	The immunogen is a synthetic peptide directed towards the middle region of human ZNFN1A1
Sequence:	LHKPLAEGTP RSNHSAQDSA VENLLLLLSKA KLVPSEREAS PSNSCQDSTD
Predicted Reactivity:	Dog: 85%, Human: 100%
Characteristics:	This is a rabbit polyclonal antibody against ZNFN1A1. It was validated on Western Blot and immunohistochemistry.
Purification:	Affinity Purified

## Target Details

Target:	IKZF1
Alternative Name:	ZNFN1A1 ( <a href="#">IKZF1 Products</a> )

Target Details

Background:	<p>ZNFN1A1 has a role in progesterone activation of fatty acid amide hydrolase in human T lymphocytes.</p> <p>Alias Symbols: IK1, LYF1, hlk-1, IKAROS, PRO0758, ZNFN1A1, Hs.54452</p> <p>Protein Interaction Partner: PRKAB2, PIN1, FGF12, DDX6, DCX, CTBP2, CTBP1, CKS1B, BYSL, FAM74A4, C1orf174, CEP57L1, ALKBH3, ZMAT2, ZNF417, FRMD6, SPATC1L, FAM161A, FAM214B, ARMC7, NOC4L, SCNM1, C8orf33, AEN, GMCL1P1, KIF9, SH2D4A, CBX8, LMO3, C19orf66, C1orf109, SYT17, ZNF581, FAM50B</p> <p>Protein Size: 519</p>
Molecular Weight:	58 kDa
Gene ID:	10320
NCBI Accession:	<a href="#">NM_006060</a> , <a href="#">NP_006051</a>
UniProt:	<a href="#">Q13422</a>
Pathways:	<a href="#">Production of Molecular Mediator of Immune Response</a>

Application Details

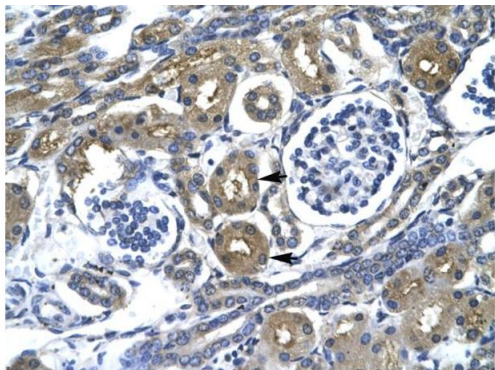
Application Notes:	Optimal working dilutions should be determined experimentally by the investigator.
Comment:	Antigen size: 519 AA
Restrictions:	For Research Use only

Handling

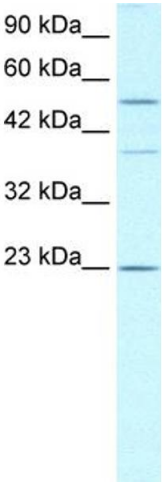
Format:	Liquid
Concentration:	Lot specific
Buffer:	Liquid. Purified antibody supplied in 1x PBS buffer with 0.09 % (w/v) sodium azide and 2 % sucrose.
Preservative:	Sodium azide
Precaution of Use:	This product contains Sodium azide: a POISONOUS AND HAZARDOUS SUBSTANCE which should be handled by trained staff only.
Handling Advice:	Avoid repeated freeze-thaw cycles.
Storage:	-20 °C
Storage Comment:	For short term use, store at 2-8°C up to 1 week. For long term storage, store at -20°C in small

aliquots to prevent freeze-thaw cycles.

Images



Rabbit Anti-ZNF1A1 Antibody  
Catalog Number: ARP32757  
Lot Number: QC2192  
Paraffin Embedded Tissue: Human Kidney  
Cells with Positive label: Epithelial cells of renal tubule(Indicated with Arrows)  
Antibody Concentration: 4.0-8.0 µg/ml  
Magnification: 400X



Immunohistochemistry

**Image 1.** Human kidney

Western Blotting

**Image 2.** WB Suggested Anti-ZNF1A1 Antibody Titration:  
0.2-1 ug/ml Positive Control: Daudi cell lysate IKZF1 is strongly supported by BioGPS gene expression data to be expressed in Human Daudi cells