

Datasheet for ABIN2777571

anti-HMG20A antibody (Middle Region)[Go to Product page](#)**1** Image

Overview

| | |
|----------------------|--------------------------------------------------------|
| Quantity: | 100 µL |
| Target: | HMG20A |
| Binding Specificity: | Middle Region |
| Reactivity: | Human, Mouse, Rat, Dog, Rabbit, Cow, Horse, Guinea Pig |
| Host: | Rabbit |
| Clonality: | Polyclonal |
| Conjugate: | This HMG20A antibody is un-conjugated |
| Application: | Western Blotting (WB) |

Product Details

| | |
|-----------------------|----------------------------------------------------------------------------------------------------------------------------------|
| Immunogen: | The immunogen is a synthetic peptide directed towards the middle region of human HMG20A |
| Sequence: | RKTQDRQKGK SHRQDAARQA THDHEKETEV KERSVFDIPI FTEEFLNHSK |
| Predicted Reactivity: | Cow: 92%, Dog: 100%, Guinea Pig: 100%, Horse: 100%, Human: 100%, Mouse: 100%, Rabbit: 85%, Rat: 100% |
| Characteristics: | This is a rabbit polyclonal antibody against HMG20A. It was validated on Western Blot using a cell lysate as a positive control. |
| Purification: | Affinity Purified |

Target Details

| | |
|---------|--------|
| Target: | HMG20A |
|---------|--------|

Target Details

| | |
|-------------------|-----------------------------------------------------------------------------------------------------------------------------------------------------------------------------------------------------------------------------------------------------------------------------------------------------------------------------------------------------------------------------------------------------------------------------------------------------------------------------------------------------------------------------------------------------------------------------------------------------------------------------------------------------------------------------------------------------------|
| Alternative Name: | HMG20A (HMG20A Products) |
| Background: | <p>HMG20A plays a role in neuronal differentiation as chromatin-associated protein. HMG20A acts as inhibitor of HMG20B. HMG20A overcomes the repressive effects of the neuronal silencer REST and induces the activation of neuronal-specific genes. HMG20A involved in the recruitment of the histone methyltransferase MLL and consequent increased methylation of histone H3 lysine 4</p> <p>Alias Symbols: FLJ10739, HMGX1, HMGXB1</p> <p>Protein Interaction Partner: RSPH9, CFAP53, SYTL4, SCNM1, CCDC136, RPP30, HMG20A, PTH2R, KPNA2, HPCAL1, DTNB, FMNL1, ADD1, BRAP, UBC, HECW2, HTT, HDAC2, HDAC1, MTA3, KDM1A, SMAD4, ELAVL1, GTF2A1L, TESC, RBM7, CCNK, MAGOHB,</p> <p>Protein Size: 347</p> |
| Molecular Weight: | 40 kDa |
| Gene ID: | 10363 |
| NCBI Accession: | NM_018200 , NP_060670 |
| UniProt: | Q9NP66 |

Application Details

| | |
|--------------------|------------------------------------------------------------------------------------|
| Application Notes: | Optimal working dilutions should be determined experimentally by the investigator. |
| Comment: | Antigen size: 347 AA |
| Restrictions: | For Research Use only |

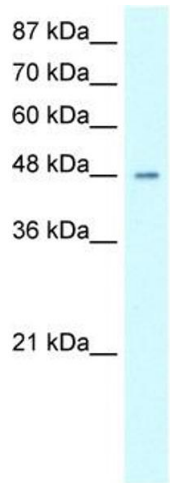
Handling

| | |
|--------------------|------------------------------------------------------------------------------------------------------------------------|
| Format: | Liquid |
| Concentration: | Lot specific |
| Buffer: | Liquid. Purified antibody supplied in 1x PBS buffer with 0.09 % (w/v) sodium azide and 2 % sucrose. |
| Preservative: | Sodium azide |
| Precaution of Use: | This product contains Sodium azide: a POISONOUS AND HAZARDOUS SUBSTANCE which should be handled by trained staff only. |
| Handling Advice: | Avoid repeated freeze-thaw cycles. |

Handling

| | |
|------------------|-----------------------------------------------------------------------------------------------------------------------------------------|
| Storage: | -20 °C |
| Storage Comment: | For short term use, store at 2-8°C up to 1 week. For long term storage, store at -20°C in small aliquots to prevent freeze-thaw cycles. |

Images



Western Blotting

Image 1. WB Suggested Anti-HMG20A Antibody Titration: 0.2-1 ug/ml ELISA Titer: 1:312500 Positive Control: 293T cell lysate HMG20A is supported by BioGPS gene expression data to be expressed in HEK293T