

Datasheet for ABIN2777597
anti-ME1 antibody (N-Term)[Go to Product page](#)

3 Images

Overview

Quantity:	100 µL
Target:	ME1
Binding Specificity:	N-Term
Reactivity:	Human, Mouse, Rat, Rabbit, Dog, Cow, Sheep, Horse, Pig
Host:	Rabbit
Clonality:	Polyclonal
Conjugate:	This ME1 antibody is un-conjugated
Application:	Western Blotting (WB), Immunohistochemistry (IHC)

Product Details

Immunogen:	The immunogen is a synthetic peptide directed towards the N terminal region of human ME1
Sequence:	QQLNIHGLLP PSFNSQEIQV LRVVKNFEHL NSDFDRYLLL MDLQDRNEKL
Predicted Reactivity:	Cow: 92%, Dog: 85%, Horse: 92%, Human: 100%, Mouse: 100%, Pig: 91%, Rabbit: 100%, Rat: 100%, Sheep: 92%
Characteristics:	This is a rabbit polyclonal antibody against ME1. It was validated on Western Blot using a cell lysate as a positive control.
Purification:	Affinity Purified

Target Details

Target:	ME1
---------	-----

Target Details

Alternative Name:	ME1 (ME1 Products)
Background:	<p>ME1 is a cytosolic, NADP-dependent enzyme that generates NADPH for fatty acid biosynthesis. The activity of this enzyme, the reversible oxidative decarboxylation of malate, links the glycolytic and citric acid cycles. The regulation of expression for this gene is complex. Increased expression can result from elevated levels of thyroid hormones or by higher proportions of carbohydrates in the diet. This gene encodes a cytosolic, NADP-dependent enzyme that generates NADPH for fatty acid biosynthesis. The activity of this enzyme, the reversible oxidative decarboxylation of malate, links the glycolytic and citric acid cycles. The regulation of expression for this gene is complex. Increased expression can result from elevated levels of thyroid hormones or by higher proportions of carbohydrates in the diet.</p> <p>Publication Note: This RefSeq record includes a subset of the publications that are available for this gene. Please see the Entrez Gene record to access additional publications.</p> <p>Alias Symbols: HUMNDME, MES</p> <p>Protein Interaction Partner: UBC, VTA1, RPUSD2, GORASP2, BOP1, TOM1, NMI, CUL3, UGDH, TBCD, GTF2A1, GARS, CTTN,</p> <p>Protein Size: 572</p>
Molecular Weight:	64 kDa
Gene ID:	4199
NCBI Accession:	NM_002395 , NP_002386
UniProt:	P48163
Pathways:	Regulation of Lipid Metabolism by PPARalpha

Application Details

Application Notes:	Optimal working dilutions should be determined experimentally by the investigator.
Comment:	Antigen size: 572 AA
Restrictions:	For Research Use only

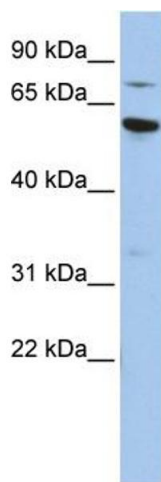
Handling

Format:	Liquid
Concentration:	Lot specific
Buffer:	Liquid. Purified antibody supplied in 1x PBS buffer with 0.09 % (w/v) sodium azide and 2 %

Handling

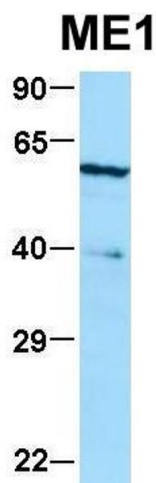
	sucrose.
Preservative:	Sodium azide
Precaution of Use:	This product contains Sodium azide: a POISONOUS AND HAZARDOUS SUBSTANCE which should be handled by trained staff only.
Handling Advice:	Avoid repeated freeze-thaw cycles.
Storage:	-20 °C
Storage Comment:	For short term use, store at 2-8°C up to 1 week. For long term storage, store at -20°C in small aliquots to prevent freeze-thaw cycles.

Images



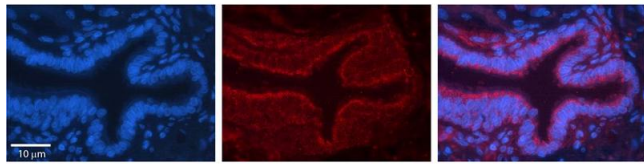
Western Blotting

Image 1. WB Suggested Anti-ME1 Antibody Titration: 0.2-1 ug/ml ELISA Titer: 1:312500 Positive Control: HepG2 cell lysate



Western Blotting

Image 2. Host: Rabbit Target Name: ME1 Sample Type: 293T Antibody Dilution: 1.0ug/ml ME1 is strongly supported by BioGPS gene expression data to be expressed in Human HEK293T cells



Immunohistochemistry

Image 3. Rabbit Anti-ME1 Antibody Formalin Fixed Paraffin Embedded Tissue: Human Bronchial Epithelial Tissue Observed Staining: Cytoplasmic Primary Antibody Concentration: 1:100 Secondary Antibody: Donkey anti-Rabbit-Cy3 Secondary Antibody Concentration: 1:200 Magnification: 20X Exposure Time: 0.5 - 2.0 sec