

Datasheet for ABIN2777602
anti-PCK1 antibody (Middle Region)

10 Images

1 Publication

[Go to Product page](#)

Overview

Quantity:	100 µL
Target:	PCK1
Binding Specificity:	Middle Region
Reactivity:	Human, Mouse, Rat, Dog, Cow, Rabbit, Horse, Pig, Guinea Pig
Host:	Rabbit
Clonality:	Polyclonal
Conjugate:	This PCK1 antibody is un-conjugated
Application:	Western Blotting (WB)

Product Details

Immunogen:	The immunogen is a synthetic peptide directed towards the middle region of human PCK1
Sequence:	NGFFGVAPGT SVKTNPNIAIK TIQKNTIFTN VAETSDGGVY WEGIDEPLAS
Predicted Reactivity:	Cow: 100%, Dog: 100%, Guinea Pig: 86%, Horse: 100%, Human: 100%, Mouse: 100%, Pig: 93%, Rabbit: 86%, Rat: 100%
Characteristics:	This is a rabbit polyclonal antibody against PCK1. It was validated on Western Blot using a cell lysate as a positive control.
Purification:	Affinity Purified

Target Details

Target:	PCK1
---------	------

Target Details

Alternative Name:	PCK1 (PCK1 Products)
Background:	<p>PCK1 is a main control point for the regulation of gluconeogenesis. The cytosolic enzyme encoded by this gene, along with GTP, catalyzes the formation of phosphoenolpyruvate from oxaloacetate, with the release of carbon dioxide and GDP. The expression of PCK1 can be regulated by insulin, glucocorticoids, glucagon, cAMP, and diet. This gene is a main control point for the regulation of gluconeogenesis. The cytosolic enzyme encoded by this gene, along with GTP, catalyzes the formation of phosphoenolpyruvate from oxaloacetate, with the release of carbon dioxide and GDP. The expression of this gene can be regulated by insulin, glucocorticoids, glucagon, cAMP, and diet. Defects in this gene are a cause of cytosolic phosphoenolpyruvate carboxykinase deficiency. A mitochondrial isozyme of the encoded protein also has been characterized. Publication Note: This RefSeq record includes a subset of the publications that are available for this gene. Please see the Entrez Gene record to access additional publications.</p> <p>Alias Symbols: MGC22652, PEPCK-C, PEPCK1, PEPCKC</p> <p>Protein Interaction Partner: UBC, FBXO25, C1R, APP, CUL5, BAG6, TCP1, TCEB1, SKP1, RPS15A, RPS6, RPS3A, RPS3, RPLP0, RPL4, PSMD12, PSMD2, PSMC5, PSMC4, PSMC2, PSMC1, PSMB7, PSMB4, PSMB1, PSMA5, PSMA2, PCK1, LDHA, HSPD1, HSPA1L, DNAJA1, HLA-C, HLA-B, GNAS, GNAI1, GNA12, FASN, EP300, T</p> <p>Protein Size: 622</p>
Molecular Weight:	69 kDa
Gene ID:	5105
NCBI Accession:	NM_002591 , NP_002582
UniProt:	P35558
Pathways:	Positive Regulation of Peptide Hormone Secretion , Carbohydrate Homeostasis

Application Details

Application Notes:	Optimal working dilutions should be determined experimentally by the investigator.
Comment:	Antigen size: 622 AA
Restrictions:	For Research Use only

Handling

Format:	Liquid
---------	--------

Handling

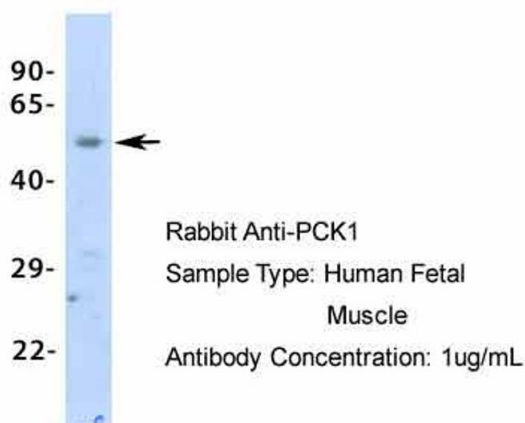
Concentration:	Lot specific
Buffer:	Liquid. Purified antibody supplied in 1x PBS buffer with 0.09 % (w/v) sodium azide and 2 % sucrose.
Preservative:	Sodium azide
Precaution of Use:	This product contains Sodium azide: a POISONOUS AND HAZARDOUS SUBSTANCE which should be handled by trained staff only.
Handling Advice:	Avoid repeated freeze-thaw cycles.
Storage:	-20 °C
Storage Comment:	For short term use, store at 2-8°C up to 1 week. For long term storage, store at -20°C in small aliquots to prevent freeze-thaw cycles.

Publications

Product cited in:	Sun, Zhou, Yin, Ding, Zhong: "Silencing of ZNF217 gene influences the biological behavior of a human ovarian cancer cell line." in: International journal of oncology , Vol. 32, Issue 5, pp. 1065-71, (2008) (PubMed).
-------------------	--

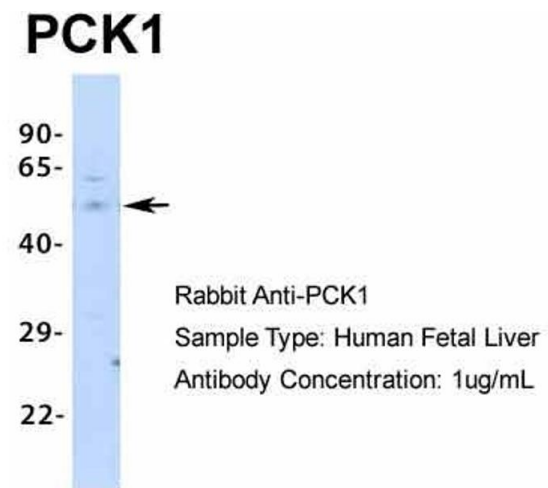
Images

PCK1



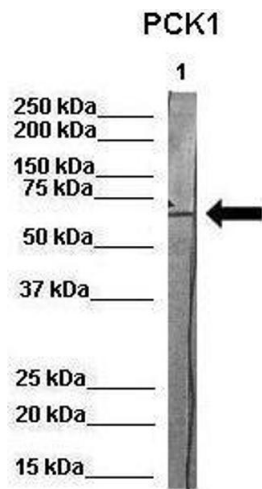
Western Blotting

Image 1. Host: Rabbit Target Name: PCK1 Sample Type:
Human Fetal Muscle Antibody Dilution: 1.0ug/ml



Western Blotting

Image 2. Host: Rabbit Target Name: PCK1 Sample Type:
Human Fetal Liver Antibody Dilution: 1.0ug/ml



Western Blotting

Image 3. WB Suggested Anti-PCK1 Antibody Positive
Control: Lane 1: 80ug pig serum protein Primary Antibody
Dilution : 1:1000 Secondary Antibody : Anti-rabbit-HRP
Secondary Antibody Dilution : 1:500 Submitted by: Martina
Ondrovics, University of Veterinary Medicine Vienna

Please check the [product details page](#) for more images. Overall 10 images are available for ABIN2777602.