

Datasheet for ABIN2777607
anti-Lbx1 antibody (Middle Region)

3 Images

[Go to Product page](#)

Overview

Quantity:	100 µL
Target:	Lbx1
Binding Specificity:	Middle Region
Reactivity:	Human, Mouse, Rat, Horse, Cow, Rabbit, Dog, Guinea Pig, Zebrafish (Danio rerio)
Host:	Rabbit
Clonality:	Polyclonal
Conjugate:	This Lbx1 antibody is un-conjugated
Application:	Western Blotting (WB)

Product Details

Immunogen:	The immunogen is a synthetic peptide directed towards the middle region of human LBX1
Sequence:	LPLAGRALLS QTSPLEALEE LASKTFKGLE VSVLQAAEGR DGMTIFGQRQ
Predicted Reactivity:	Cow: 100%, Dog: 100%, Guinea Pig: 100%, Horse: 100%, Human: 100%, Mouse: 100%, Rabbit: 100%, Rat: 100%, Zebrafish: 100%
Characteristics:	This is a rabbit polyclonal antibody against LBX1. It was validated on Western Blot using a cell lysate as a positive control.
Purification:	Affinity Purified

Target Details

Target:	Lbx1
---------	------

Target Details

Alternative Name:	LBX1 (Lbx1 Products)
Background:	<p>LBX1 is the transcription factor required for the development of GABAergic interneurons in the dorsal horn of the spinal cord and migration and further development of hypaxial muscle precursor cells for limb muscles, diaphragm and hypoglossal cord. This gene and the orthologous mouse gene were found by their homology to the Drosophila lady bird early and late homeobox genes. In the mouse, this gene is a key regulator of muscle precursor cell migration and is required for the acquisition of dorsal identities of forelimb muscles.</p> <p>Alias Symbols: HPX-6, HPX6, LBX1H, homeobox</p> <p>Protein Interaction Partner: RBL2,</p> <p>Protein Size: 281</p>
Molecular Weight:	30 kDa
Gene ID:	10660
NCBI Accession:	NM_006562 , NP_006553
UniProt:	P52954

Application Details

Application Notes:	Optimal working dilutions should be determined experimentally by the investigator.
Comment:	Antigen size: 281 AA
Restrictions:	For Research Use only

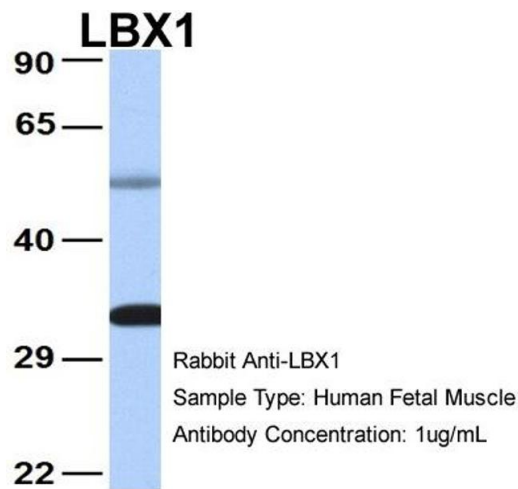
Handling

Format:	Liquid
Concentration:	Lot specific
Buffer:	Liquid. Purified antibody supplied in 1x PBS buffer with 0.09 % (w/v) sodium azide and 2 % sucrose.
Preservative:	Sodium azide
Precaution of Use:	This product contains Sodium azide: a POISONOUS AND HAZARDOUS SUBSTANCE which should be handled by trained staff only.
Handling Advice:	Avoid repeated freeze-thaw cycles.
Storage:	-20 °C

Handling

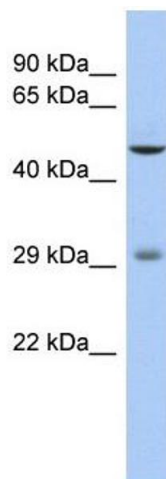
Storage Comment: For short term use, store at 2-8°C up to 1 week. For long term storage, store at -20°C in small aliquots to prevent freeze-thaw cycles.

Images



Western Blotting

Image 1. Host: Rabbit Target Name: LBX1 Sample Type: Human Fetal Muscle Antibody Dilution: 1.0ug/ml



Western Blotting

Image 2. WB Suggested Anti-LBX1 Antibody Titration: 0.2-1 ug/ml ELISA Titer: 1:1562500 Positive Control: Human Thymus



Western Blotting

Image 3. WB Suggested Anti-LBX1 antibody Titration: 1 ug/mL Sample Type: Human heart