



[Go to Product page](#)

Datasheet for ABIN2777627

anti-WDHD1 antibody (Middle Region)

1 Image

Overview

Quantity:	100 µL
Target:	WDHD1
Binding Specificity:	Middle Region
Reactivity:	Human, Mouse, Cow, Dog, Pig, Rabbit, Rat, Horse
Host:	Rabbit
Clonality:	Polyclonal
Conjugate:	This WDHD1 antibody is un-conjugated
Application:	Western Blotting (WB)

Product Details

Immunogen:	The immunogen is a synthetic peptide directed towards the middle region of human WDHD1
Sequence:	KQILHGDPLP LTRKSYLAWI GFSAEGTPCY VDSEGIVRML NRGLGNTWTP
Specificity:	Reactive with the SepB fragment (428-850aa) of WDHD1.
Predicted Reactivity:	Cow: 100%, Dog: 100%, Horse: 93%, Human: 100%, Mouse: 93%, Pig: 100%, Rabbit: 100%, Rat: 93%
Characteristics:	This is a rabbit polyclonal antibody against WDHD1. It was validated on Western Blot using a cell lysate as a positive control.
Purification:	Affinity Purified

Target Details

Target: WDHD1

Alternative Name: WDHD1 ([WDHD1 Products](#))

Background: WDHD1 contains multiple N-terminal WD40 domains and a C-terminal high mobility group (HMG) box. WD40 domains are found in a variety of eukaryotic proteins and may function as adaptor/regulatory modules in signal transduction, pre-mRNA processing and cytoskeleton assembly. HMG boxes are found in many eukaryotic proteins involved in chromatin assembly, transcription and replication. WDHD1 may also be involved in protein-protein interactions. The protein encoded by this gene contains multiple N-terminal WD40 domains and a C-terminal high mobility group (HMG) box. WD40 domains are found in a variety of eukaryotic proteins and may function as adaptor/regulatory modules in signal transduction, pre-mRNA processing and cytoskeleton assembly. HMG boxes are found in many eukaryotic proteins involved in chromatin assembly, transcription and replication. Alternative splicing results in two transcript variants encoding different isoforms.

Alias Symbols: AND-1, CTF4, CHTF4

Protein Interaction Partner: UBC, RPA3, RPA2, RPA1, RABEP2, BRCC3, CD2AP, KIAA1033, SNRNP200, HNRNPR, TXNDC9, BAG6, POLR2A, MAP4, UBD, PAXIP1, ECT2, PLBD2, COA7, TRAP1, ZMYM3, SELENBP1, YY1, PLAUR, HIST2H3C, KAT2A, SUMO2, NCOA2, SRC,

Protein Size: 1129

Molecular Weight: 126 kDa

Gene ID: 11169

NCBI Accession: [NM_007086](#), [NP_009017](#)

UniProt: [O75717](#)

Application Details

Application Notes: Optimal working dilutions should be determined experimentally by the investigator.

Comment: Antigen size: 1129 AA

Restrictions: For Research Use only

Handling

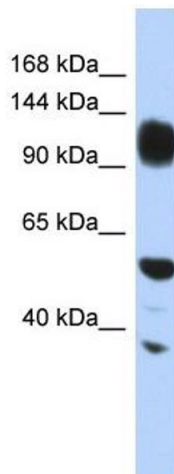
Format: Liquid

Concentration: Lot specific

Handling

Buffer:	Liquid. Purified antibody supplied in 1x PBS buffer with 0.09 % (w/v) sodium azide and 2 % sucrose.
Preservative:	Sodium azide
Precaution of Use:	This product contains Sodium azide: a POISONOUS AND HAZARDOUS SUBSTANCE which should be handled by trained staff only.
Handling Advice:	Avoid repeated freeze-thaw cycles.
Storage:	-20 °C
Storage Comment:	For short term use, store at 2-8°C up to 1 week. For long term storage, store at -20°C in small aliquots to prevent freeze-thaw cycles.

Images



Western Blotting

Image 1. WB Suggested Anti-WDHD1 Antibody Titration: 0.2-1 ug/ml ELISA Titer: 1:12500 Positive Control: HepG2 cell lysate