

Datasheet for ABIN2777631  
**anti-SP140 antibody (N-Term)**[Go to Product page](#)

## 4 Images

## Overview

Quantity:	100 µL
Target:	SP140
Binding Specificity:	N-Term
Reactivity:	Human, Rat, Dog, Mouse, Horse, Pig
Host:	Rabbit
Clonality:	Polyclonal
Conjugate:	This SP140 antibody is un-conjugated
Application:	Western Blotting (WB), Immunohistochemistry (IHC)

## Product Details

Immunogen:	The immunogen is a synthetic peptide directed towards the N terminal region of human SP140
Sequence:	PEPIFRFFRE NKVEIASAIT RPFPLMGLR DRSEFISEQMY EHFQEAFRNL
Predicted Reactivity:	Dog: 86%, Horse: 86%, Human: 100%, Mouse: 77%, Pig: 86%, Rat: 77%
Characteristics:	This is a rabbit polyclonal antibody against SP140. It was validated on Western Blot and immunohistochemistry.
Purification:	Protein A purified

## Target Details

Target:	SP140
Alternative Name:	SP140 ( <a href="#">SP140 Products</a> )

## Target Details

Background: SP140 is the nuclear body protein found specifically in all NP cells. HIV-1 infection induced its partial dispersal from nuclear bodies into cytosolic colocalization with Vif.

Alias Symbols: LYSP100, LYSP100-A, LYSP100-B

Protein Interaction Partner: UBC, Sertad1, SIRT2,

Protein Size: 412

Molecular Weight: 46 kDa

Gene ID: 11262

NCBI Accession: [NM\\_001005176](#), [NP\\_001005176](#)

UniProt: [Q13342](#)

## Application Details

Application Notes: Optimal working dilutions should be determined experimentally by the investigator.

Comment: Antigen size: 172 AA

Restrictions: For Research Use only

## Handling

Format: Liquid

Concentration: Lot specific

Buffer: Liquid. Purified antibody supplied in 1x PBS buffer with 0.09 % (w/v) sodium azide and 2 % sucrose.

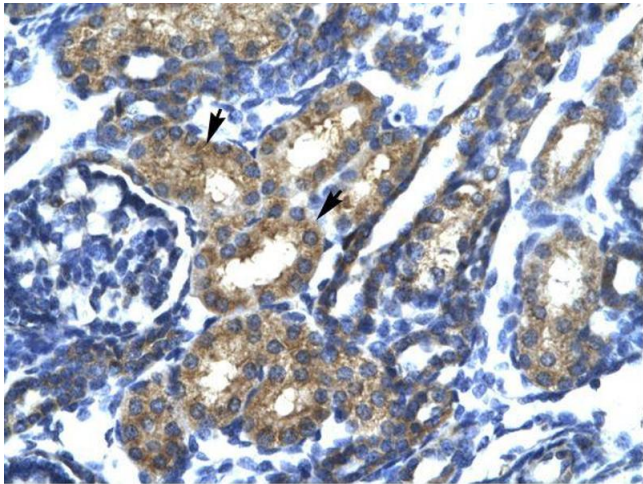
Preservative: Sodium azide

Precaution of Use: This product contains Sodium azide: a POISONOUS AND HAZARDOUS SUBSTANCE which should be handled by trained staff only.

Handling Advice: Avoid repeated freeze-thaw cycles.

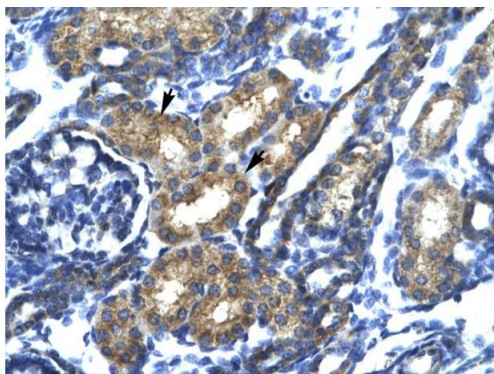
Storage: -20 °C

Storage Comment: For short term use, store at 2-8°C up to 1 week. For long term storage, store at -20°C in small aliquots to prevent freeze-thaw cycles.



Immunohistochemistry

Image 1.



Rabbit Anti-SP140 Antibody  
Catalog Number: ARP32854  
Lot Number: QC2333  
Paraffin Embedded Tissue: Human Kidney  
Cells with Positive label: Epithelial cells of renal tubule (Indicated with Arrows)  
Antibody Concentration: 4.0-8.0 µg/ml  
Magnification: 400X

Immunohistochemistry

Image 2.



Western Blotting

**Image 3.** WB Suggested Anti-SP140 Antibody Titration: 5.0ug/ml  
Positive Control: Raji cell lysate  
Supported by BioGPS gene expression data to be expressed in Raji

Please check the [product details page](#) for more images. Overall 4 images are available for ABIN2777631.