



[Go to Product page](#)

Datasheet for ABIN2777637  
**anti-DLX1 antibody (C-Term)**

1 Image

1 Publication

### Overview

Quantity:	100 µL
Target:	DLX1
Binding Specificity:	C-Term
Reactivity:	Human, Mouse, Rat, Guinea Pig, Horse, Dog, Rabbit, Cow
Host:	Rabbit
Clonality:	Polyclonal
Conjugate:	This DLX1 antibody is un-conjugated
Application:	Western Blotting (WB)

### Product Details

Immunogen:	The immunogen is a synthetic peptide directed towards the C terminal region of human DLX1
Sequence:	KFKKLMKQGG AALEGSALAN GRALSAGSPP VPPGWNPNSS SGKGS GG NAG
Predicted Reactivity:	Cow: 100%, Dog: 100%, Guinea Pig: 100%, Horse: 100%, Human: 100%, Mouse: 100%, Rabbit: 93%, Rat: 100%
Characteristics:	This is a rabbit polyclonal antibody against DLX1. It was validated on Western Blot using a cell lysate as a positive control.
Purification:	Affinity Purified

### Target Details

Target:	DLX1
---------	------

## Target Details

---

Alternative Name: [DLX1 \(DLX1 Products\)](#)

Background: DLX1 is a member of a homeobox transcription factor family. It is localized to the nucleus where it may function as a transcriptional regulator of signals from multiple TGF- $\beta$  superfamily members. DLX1 may play a role in the control of craniofacial patterning and the differentiation and survival of inhibitory neurons in the forebrain. This gene encodes a member of a homeobox transcription factor gene family similar to the Drosophila distal-less gene. The encoded protein is localized to the nucleus where it may function as a transcriptional regulator of signals from multiple TGF- $\beta$  superfamily members. The encoded protein may play a role in the control of craniofacial patterning and the differentiation and survival of inhibitory neurons in the forebrain. This gene is located in a tail-to-tail configuration with another member of the family on the long arm of chromosome 2. Alternatively spliced transcript variants encoding different isoforms have been described.

Alias Symbols: -

Protein Interaction Partner: SMAD4,

Protein Size: 255

---

Molecular Weight: 27 kDa

---

Gene ID: 1745

---

NCBI Accession: [NM\\_178120](#), [NP\\_835221](#)

---

UniProt: [P56177](#)

## Application Details

---

Application Notes: Optimal working dilutions should be determined experimentally by the investigator.

---

Comment: Antigen size: 255 AA

---

Restrictions: For Research Use only

## Handling

---

Format: Liquid

---

Concentration: Lot specific

---

Buffer: Liquid. Purified antibody supplied in 1x PBS buffer with 0.09 % (w/v) sodium azide and 2 % sucrose.

---

Preservative: Sodium azide

---

## Handling

---

Precaution of Use:	This product contains Sodium azide: a POISONOUS AND HAZARDOUS SUBSTANCE which should be handled by trained staff only.
Handling Advice:	Avoid repeated freeze-thaw cycles.
Storage:	-20 °C
Storage Comment:	For short term use, store at 2-8°C up to 1 week. For long term storage, store at -20°C in small aliquots to prevent freeze-thaw cycles.

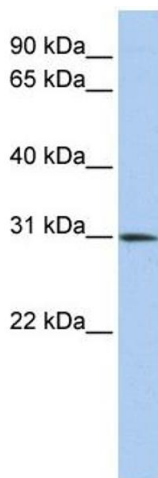
## Publications

---

Product cited in: Lazrek, Goffard, Schanen, Karquel, Bocket, Lion, Devaux, Hedouin, Gosset, Hober: "Detection of hepatitis C virus antibodies and RNA among medicolegal autopsy cases in Northern France." in: **Diagnostic microbiology and infectious disease**, Vol. 55, Issue 1, pp. 55-8, (2006) ([PubMed](#)).

## Images

---



### Western Blotting

**Image 1.** WB Suggested Anti-DLX1 Antibody Titration: 0.2-1 ug/ml ELISA Titer: 1:1562500 Positive Control: Human Placenta