

Datasheet for ABIN2777642 anti-GC-Rich Promoter Binding Protein 1 (GPBP1) (N-Term) antibody

[Go to Product page](#)

2 Images

Overview

Quantity:	100 µL
Target:	GC-Rich Promoter Binding Protein 1 (GPBP1)
Binding Specificity:	N-Term
Reactivity:	Mouse, Human, Rat, Cow, Dog, Guinea Pig, Horse, Rabbit
Host:	Rabbit
Clonality:	Polyclonal
Conjugate:	Un-conjugated
Application:	Western Blotting (WB), Immunohistochemistry (IHC)

Product Details

Immunogen:	The immunogen is a synthetic peptide directed towards the N terminal region of human DKFZP761C169
Sequence:	RKEKNGWRTH GRNGTENINH RGGYHGGSSR SRSSIFHAGK SQGLHENNIP
Predicted Reactivity:	Cow: 93%, Dog: 93%, Guinea Pig: 93%, Horse: 93%, Human: 100%, Mouse: 93%, Rabbit: 86%, Rat: 93%
Characteristics:	This is a rabbit polyclonal antibody against DKFZP761C169. It was validated on Western Blot and immunohistochemistry.
Purification:	Affinity Purified

Target Details

Target:	GC-Rich Promoter Binding Protein 1 (GPBP1)
---------	--

Target Details

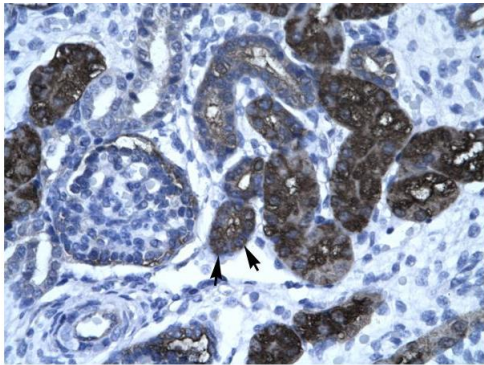
Abstract:	GPBP1 Products
Background:	Vasculin is a novel vascular protein differentially expressed in human atherogenesis Alias Symbols: GPBP, SSH6, VASCULIN, DKFZP761C169 Protein Interaction Partner: PLEKHF2, C20orf195, MCRS1, DNAL4, UBC, EP300, Protein Size: 473
Molecular Weight:	52 kDa
Gene ID:	65056
NCBI Accession:	NM_022913 , NP_075064
UniProt:	Q86WP2

Application Details

Application Notes:	Optimal working dilutions should be determined experimentally by the investigator.
Comment:	Antigen size: 473 AA
Restrictions:	For Research Use only

Handling

Format:	Liquid
Concentration:	Lot specific
Buffer:	Liquid. Purified antibody supplied in 1x PBS buffer with 0.09 % (w/v) sodium azide and 2 % sucrose.
Preservative:	Sodium azide
Precaution of Use:	This product contains Sodium azide: a POISONOUS AND HAZARDOUS SUBSTANCE which should be handled by trained staff only.
Handling Advice:	Avoid repeated freeze-thaw cycles.
Storage:	-20 °C
Storage Comment:	For short term use, store at 2-8°C up to 1 week. For long term storage, store at -20°C in small aliquots to prevent freeze-thaw cycles.



Rabbit Anti-DKFZp761C169 Antibody
Catalog Number: ARP32876
Lot Number: QC2476
Paraffin Embedded Tissue: Human Kidney
Cells with Positive label: Epithelial cells of renal tubule (Indicated with Arrows)
Antibody Concentration: 4.0-8.0 µg/ml
Magnification: 400X

Immunohistochemistry

Image 1. Human kidney



Western Blotting

Image 2. WB Suggested Anti-DKFZP761C169 Antibody
Titration: 0.2-1 ug/ml Positive Control: HepG2 cell lysate