

Datasheet for ABIN2777651
anti-HES6 antibody (C-Term)[Go to Product page](#)

2 Images

Overview

Quantity:	100 µL
Target:	HES6
Binding Specificity:	C-Term
Reactivity:	Human, Rat, Mouse, Dog
Host:	Rabbit
Clonality:	Polyclonal
Conjugate:	This HES6 antibody is un-conjugated
Application:	Western Blotting (WB), Immunohistochemistry (IHC)

Product Details

Immunogen:	The immunogen is a synthetic peptide directed towards the C terminal region of human HES6
Sequence:	PPGPGDDLCS DLEEAPAEEL SQAPAEGLDL VPAALGSLTT AQIARSVWRP
Predicted Reactivity:	Dog: 86%, Human: 100%, Mouse: 79%, Rat: 86%
Characteristics:	This is a rabbit polyclonal antibody against HES6. It was validated on Western Blot and immunohistochemistry.
Purification:	Protein A purified

Target Details

Target:	HES6
Alternative Name:	HES6 (HES6 Products)

Target Details

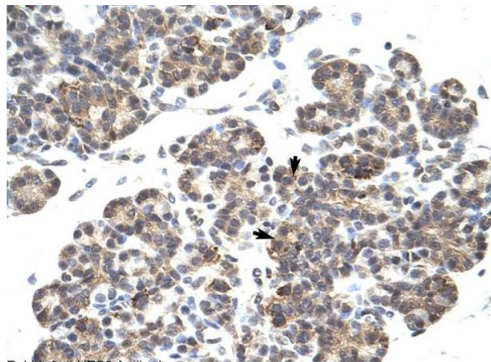
Background:	<p>HES6 belongs to a subfamily of basic helix-loop-helix transcription factors that includes Drosophila Hairy and Enhancer of split genes. Like other members of the family, HES6 features the WRPW motif which is consisted just of four amino acids at its C-terminus. It is expressed by both undifferentiated and differentiated cells and is an inhibitor of Hes1. HES6 supports Mash1 activity and promotes cell differentiation.</p> <p>Alias Symbols: HES-6, bHLHb41, bHLHc23</p> <p>Protein Interaction Partner: TWIST1, CREBBP, TLE1, HES1, CSNK2A1,</p> <p>Protein Size: 224</p>
Molecular Weight:	25 kDa
Gene ID:	55502
NCBI Accession:	NM_018645 , NP_061115
UniProt:	Q96HZ4

Application Details

Application Notes:	Optimal working dilutions should be determined experimentally by the investigator.
Comment:	Antigen size: 224 AA
Restrictions:	For Research Use only

Handling

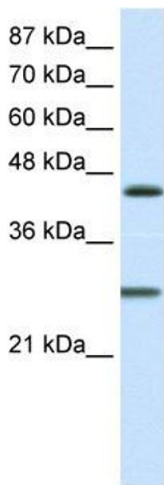
Format:	Liquid
Concentration:	Lot specific
Buffer:	Liquid. Purified antibody supplied in 1x PBS buffer with 0.09 % (w/v) sodium azide and 2 % sucrose.
Preservative:	Sodium azide
Precaution of Use:	This product contains Sodium azide: a POISONOUS AND HAZARDOUS SUBSTANCE which should be handled by trained staff only.
Handling Advice:	Avoid repeated freeze-thaw cycles.
Storage:	-20 °C
Storage Comment:	For short term use, store at 2-8°C up to 1 week. For long term storage, store at -20°C in small aliquots to prevent freeze-thaw cycles.



Rabbit Anti-HES6 Antibody
Catalog Number: ARP32896
Lot Number: QC2366
Paraffin Embedded Tissue: Human Pancreas
Cells with Positive label: Epithelial cells of pancreatic acinus (Indicated with Arrows)
Antibody Concentration: 4.0-8.0 µg/ml
Magnification: 400X

Immunohistochemistry

Image 1. Human Pancreas



Western Blotting

Image 2. WB Suggested Anti-HES6 Antibody Titration:
1.25ug/ml Positive Control: Transfected 293T