

Datasheet for ABIN2777661
anti-KDM3A antibody (C-Term)

3 Images

1 Publication

[Go to Product page](#)

Overview

Quantity:	100 µL
Target:	KDM3A
Binding Specificity:	C-Term
Reactivity:	Human, Mouse, Rat, Dog, Cow, Rabbit, Guinea Pig, Horse, Zebrafish (Danio rerio)
Host:	Rabbit
Clonality:	Polyclonal
Conjugate:	This KDM3A antibody is un-conjugated
Application:	Western Blotting (WB), Immunohistochemistry (IHC)

Product Details

Immunogen:	The immunogen is a synthetic peptide directed towards the C terminal region of human JMJD1A
Sequence:	HNLYSCIKVA EDFVSPEHVK HCFWLTQEFR YLSQTHTNHE DKLQVKNVIY
Predicted Reactivity:	Cow: 100%, Dog: 100%, Guinea Pig: 100%, Horse: 100%, Human: 100%, Mouse: 100%, Rabbit: 100%, Rat: 100%, Zebrafish: 92%
Characteristics:	This is a rabbit polyclonal antibody against JMJD1A. It was validated on Western Blot and immunohistochemistry.
Purification:	Protein A purified

Target Details

Target:	KDM3A
---------	-------

Target Details

Alternative Name:	JMJD1A (KDM3A Products)
Background:	<p>JMJD1A is a zinc finger protein that contains a jumonji domain.</p> <p>Alias Symbols: TSGA, JMJD1, JHDM2A, JHMD2A, JMJD1A</p> <p>Protein Interaction Partner: RIPK2, HIST2H3C, CBX2, CBX4, AR, HIF1A, UBC, MYOCD, MKL1, MKL2, ETV2, TCEAL1,</p> <p>Protein Size: 1321</p>
Molecular Weight:	147 kDa
Gene ID:	55818
NCBI Accession:	NM_018433 , NP_060903
UniProt:	Q53S72
Pathways:	Intracellular Steroid Hormone Receptor Signaling Pathway , Nuclear Hormone Receptor Binding , Warburg Effect

Application Details

Application Notes:	Optimal working dilutions should be determined experimentally by the investigator.
Comment:	Antigen size: 1321 AA
Restrictions:	For Research Use only

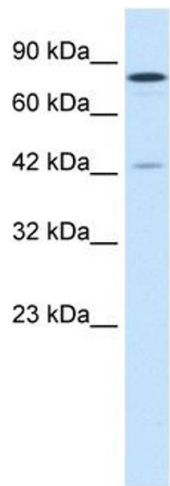
Handling

Format:	Liquid
Concentration:	Lot specific
Buffer:	Liquid. Purified antibody supplied in 1x PBS buffer with 0.09 % (w/v) sodium azide and 2 % sucrose.
Preservative:	Sodium azide
Precaution of Use:	This product contains Sodium azide: a POISONOUS AND HAZARDOUS SUBSTANCE which should be handled by trained staff only.
Handling Advice:	Avoid repeated freeze-thaw cycles.
Storage:	-20 °C
Storage Comment:	For short term use, store at 2-8°C up to 1 week. For long term storage, store at -20°C in small aliquots to prevent freeze-thaw cycles.

Publications

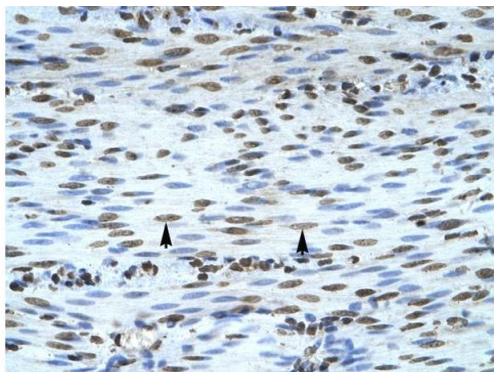
Product cited in: Lazrek, Goffard, Schanen, Karquel, Bocket, Lion, Devaux, Hedouin, Gosset, Hober: "Detection of hepatitis C virus antibodies and RNA among medicolegal autopsy cases in Northern France." in: **Diagnostic microbiology and infectious disease**, Vol. 55, Issue 1, pp. 55-8, (2006) ([PubMed](#)).

Images



Western Blotting

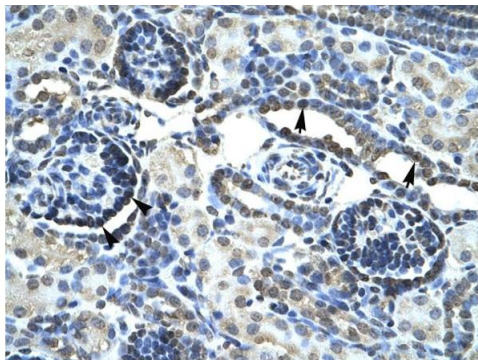
Image 1. WB Suggested Anti-JMJD1A Antibody Titration: 1.0ug/ml Positive Control: Jurkat cell lysate KDM3A is supported by BioGPS gene expression data to be expressed in Jurkat



Rabbit Anti-JMJD1A Antibody
Catalog Number: ARP32911
Lot Number: QC2378
Paraffin Embedded Tissue: Human Smooth Muscle
Cells with Positive label: Smooth muscle cells (Indicated with Arrows)
Antibody Concentration: 4.0-8.0 µg/ml
Magnification: 400X

Immunohistochemistry

Image 2. Human Smooth Muscle



Rabbit Anti-JMJD1A Antibody
Catalog Number: ARP32911
Lot Number: QC2378
Paraffin Embedded Tissue: Human Kidney
Cells with Positive label: Epithelial cells of renal tubule (Indicated with Arrows) and renal corpuscle (Indicated with Arrow Heads)
Antibody Concentration: 4.0-8.0 µg/ml
Magnification: 400X

Immunohistochemistry

Image 3. Human kidney