

Datasheet for ABIN2777668
anti-PSMC3 antibody (Middle Region)[Go to Product page](#)

2 Images

1 Publication

Overview

Quantity:	100 µL
Target:	PSMC3
Binding Specificity:	Middle Region
Reactivity:	Human, Mouse, Rat, Dog, Zebrafish (Danio rerio), Cow, Rabbit, Guinea Pig, Horse
Host:	Rabbit
Clonality:	Polyclonal
Conjugate:	This PSMC3 antibody is un-conjugated
Application:	Western Blotting (WB), Immunohistochemistry (IHC)

Product Details

Immunogen:	The immunogen is a synthetic peptide directed towards the middle region of human PSMC3
Sequence:	TKRFDSEKAG DREVQRTMLE LLNQLDGFQP NTQVKVIAAT NRVDILD
Predicted Reactivity:	Cow: 100%, Dog: 100%, Guinea Pig: 100%, Horse: 100%, Human: 100%, Mouse: 100%, Rabbit: 100%, Rat: 100%, Zebrafish: 92%
Characteristics:	This is a rabbit polyclonal antibody against PSMC3. It was validated on Western Blot and immunohistochemistry.
Purification:	Protein A purified

Target Details

Target:	PSMC3
---------	-------

Target Details

Alternative Name:	PSMC3 (PSMC3 Products)
Background:	<p>PSMC3 is a subunit of the 26S proteasome. 26S proteasome is a multicatalytic proteinase complex with a highly ordered structure composed of 2 complexes, a 20S core and a 19S regulator. The 20S core is composed of 4 rings of 28 non-identical subunits, 2 rings are composed of 7 alpha subunits and 2 rings are composed of 7 beta subunits. The 19S regulator is composed of a base, which contains 6 ATPase subunits and 2 non-ATPase subunits, and a lid, which contains up to 10 non-ATPase subunits. Proteasomes are distributed throughout eukaryotic cells at a high concentration and cleave peptides in an ATP/ubiquitin-dependent process in a non-lysosomal pathway. An essential function of a modified proteasome, the immunoproteasome, is the processing of class I MHC peptides. This gene encodes one of the ATPase subunits, a member of the triple-A family of ATPases which have a chaperone-like activity. This subunit may compete with PSMC2 for binding to the HIV tat protein to regulate the interaction between the viral protein and the transcription complex. A pseudogene has been identified on chromosome 9</p> <p>Alias Symbols: TBP1</p> <p>Protein Interaction Partner: AMOTL2, UBC, PSMD9, PSMC6, PSMC3, KDM1A, HUWE1, SUMO2, PSMD14, MDM2, ASB11, UCHL5, PSMD3, PSMD2, PSMD1, PSMC2, PSMC1, ADRM1, JKAMP, FBXO6, PARK2, BAG3, GADD45A, NOS2, MYC, PSMD13, PSMC4, PSMA8, UBFD1, ECD, STIP1, RANBP9, PSMD6, ZFYVE16, USP14, RUVBL1, PSM</p> <p>Protein Size: 439</p>
Molecular Weight:	45 kDa
Gene ID:	5702
NCBI Accession:	NM_002804 , NP_002795
UniProt:	Q6IBS1
Pathways:	Mitotic G1-G1/S Phases , DNA Replication , Synthesis of DNA , Ubiquitin Proteasome Pathway

Application Details

Application Notes:	Optimal working dilutions should be determined experimentally by the investigator.
Comment:	Antigen size: 439 AA
Restrictions:	For Research Use only

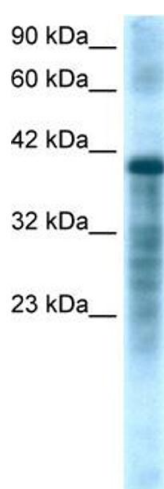
Handling

Format:	Liquid
Concentration:	Lot specific
Buffer:	Liquid. Purified antibody supplied in 1x PBS buffer with 0.09 % (w/v) sodium azide and 2 % sucrose.
Preservative:	Sodium azide
Precaution of Use:	This product contains Sodium azide: a POISONOUS AND HAZARDOUS SUBSTANCE which should be handled by trained staff only.
Handling Advice:	Avoid repeated freeze-thaw cycles.
Storage:	-20 °C
Storage Comment:	For short term use, store at 2-8°C up to 1 week. For long term storage, store at -20°C in small aliquots to prevent freeze-thaw cycles.

Publications

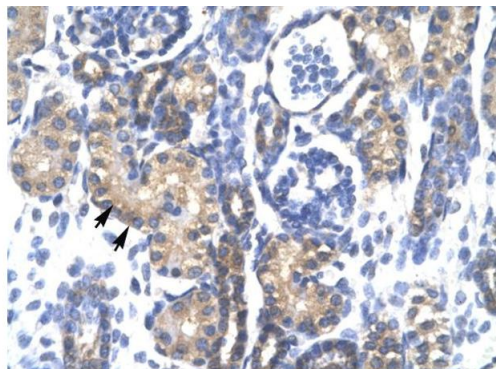
Product cited in:	Coyne, Gambling, Boucher, Carson, Johnson: "Role of claudin interactions in airway tight junctional permeability." in: American journal of physiology. Lung cellular and molecular physiology , Vol. 285, Issue 5, pp. L1166-78, (2003) (PubMed).
-------------------	--

Images



Western Blotting

Image 1. WB Suggested Anti-PSMC3 Antibody Titration:
1.25ug/ml Positive Control: HepG2 cell lysate



Rabbit Anti-PSMC3 Antibody
Catalog Number: ARP32929
Lot Number: QC2755
Paraffin Embedded Tissue: Human Kidney
Cells with Positive label: Epithelial cells of renal tubule (Indicated with Arrows)
Antibody Concentration: 4.0-8.0 µg/ml
Magnification: 400X

Immunohistochemistry

Image 2. Human kidney