



[Go to Product page](#)

Datasheet for ABIN2777671
anti-SLC39A10 antibody (N-Term)

1 Image

Overview

Quantity:	100 µL
Target:	SLC39A10
Binding Specificity:	N-Term
Reactivity:	Human, Mouse, Rat, Horse, Rabbit, Cow, Guinea Pig, Dog, Zebrafish (Danio rerio)
Host:	Rabbit
Clonality:	Polyclonal
Conjugate:	This SLC39A10 antibody is un-conjugated
Application:	Western Blotting (WB)

Product Details

Immunogen:	The immunogen is a synthetic peptide directed towards the N-terminal region of human SLC39A10
Sequence:	EHCIRMFKHY KQQRGKQKWF MKQNTTEESTI GRKLSDHKLN NTPDSDWLQL
Predicted Reactivity:	Cow: 93%, Dog: 100%, Guinea Pig: 100%, Horse: 93%, Human: 100%, Mouse: 100%, Rabbit: 100%, Rat: 100%, Zebrafish: 79%
Characteristics:	This is a rabbit polyclonal antibody against SLC39A10. It was validated on Western Blot.
Purification:	Affinity Purified

Target Details

Target:	SLC39A10
---------	----------

Target Details

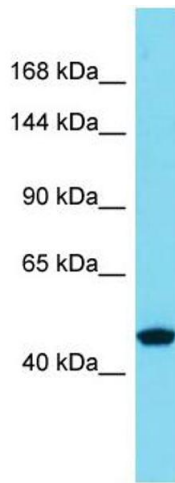
Alternative Name:	SLC39A10 (SLC39A10 Products)
Background:	<p>Zinc is an essential cofactor for hundreds of enzymes. It is involved in protein, nucleic acid, carbohydrate, and lipid metabolism, as well as in the control of gene transcription, growth, development, and differentiation. SLC39A10 belongs to a subfamily of proteins that show structural characteristics of zinc transporters (Taylor and Nicholson, 2003 [PubMed 12659941]).[supplied by OMIM, Mar 2008]</p> <p>Alias Symbols: LZT-Hs2</p> <p>Protein Size: 381</p>
Molecular Weight:	41 kDa
Gene ID:	57181
NCBI Accession:	NM_001127257 , NP_001120729
UniProt:	B4DGU0

Application Details

Application Notes:	Optimal working dilution should be determined by the investigator.
Restrictions:	For Research Use only

Handling

Format:	Liquid
Concentration:	1 mg/mL
Buffer:	Liquid. Purified antibody supplied in 1x PBS buffer with 0.09 % (w/v) sodium azide and 2 % sucrose.
Preservative:	Sodium azide
Precaution of Use:	This product contains Sodium azide: a POISONOUS AND HAZARDOUS SUBSTANCE which should be handled by trained staff only.
Handling Advice:	Avoid repeat freeze-thaw cycles.
Storage:	-20 °C
Storage Comment:	For short term use, store at 2-8°C up to 1 week. For long term storage, store at -20°C in small aliquots to prevent freeze-thaw cycles.



Western Blotting

Image 1. Host: Rabbit Target Name: SLC39A10 Sample Type: Thyroid Tumor lysates Antibody Dilution: 1.0ug/ml