

Datasheet for ABIN2777685
anti-RBAK antibody (Middle Region)[Go to Product page](#)

2 Images

Overview

Quantity:	100 µL
Target:	RBAK
Binding Specificity:	Middle Region
Reactivity:	Human, Mouse, Rat, Guinea Pig, Horse, Cow, Dog, Rabbit
Host:	Rabbit
Clonality:	Polyclonal
Conjugate:	This RBAK antibody is un-conjugated
Application:	Western Blotting (WB), Immunohistochemistry (IHC)

Product Details

Immunogen:	The immunogen is a synthetic peptide directed towards the middle region of human RBAK
Sequence:	HYRSHLEEKPYECNECGKTFNLNSAFIRHRKVHTEEKSHESCCEGKFSQL
Predicted Reactivity:	Cow: 100%, Dog: 100%, Guinea Pig: 100%, Horse: 100%, Human: 100%, Mouse: 93%, Rabbit: 79%, Rat: 100%
Characteristics:	This is a rabbit polyclonal antibody against RBAK. It was validated on Western Blot and immunohistochemistry.
Purification:	Affinity Purified

Target Details

Target:	RBAK
---------	------

Target Details

Alternative Name:	RBAK (RBAK Products)
Background:	<p>RBAK encodes a nuclear protein which interacts with the tumor suppressor retinoblastoma 1. The two interacting proteins are thought to act as a transcriptional repressor for promoters which are activated by the E2F1 transcription factor. This protein contains a Kruppel-associated box (KRAB), which is a transcriptional repressor motif. This gene encodes a nuclear protein which interacts with the tumor suppressor retinoblastoma 1. The two interacting proteins are thought to act as a transcriptional repressor for promoters which are activated by the E2F1 transcription factor. This protein contains a Kruppel-associated box (KRAB), which is a transcriptional repressor motif.</p> <p>Alias Symbols: ZNF769</p> <p>Protein Interaction Partner: SUMO1, RB1, SMARCAD1, Trim28, AR,</p> <p>Protein Size: 714</p>
Molecular Weight:	83 kDa
Gene ID:	57786
NCBI Accession:	NM_021163 , NP_066986
UniProt:	Q9NYW8

Application Details

Application Notes:	Optimal working dilutions should be determined experimentally by the investigator.
Comment:	Antigen size: 714 AA
Restrictions:	For Research Use only

Handling

Format:	Liquid
Concentration:	Lot specific
Buffer:	Liquid. Purified antibody supplied in 1x PBS buffer with 0.09 % (w/v) sodium azide and 2 % sucrose.
Preservative:	Sodium azide
Precaution of Use:	This product contains Sodium azide: a POISONOUS AND HAZARDOUS SUBSTANCE which should be handled by trained staff only.
Handling Advice:	Avoid repeated freeze-thaw cycles.

Handling

Storage: -20 °C

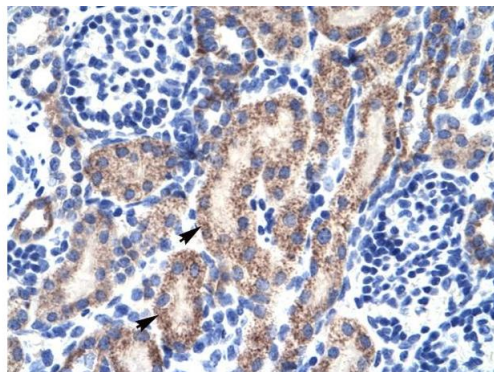
Storage Comment: For short term use, store at 2-8°C up to 1 week. For long term storage, store at -20°C in small aliquots to prevent freeze-thaw cycles.

Images



Western Blotting

Image 1. WB Suggested Anti-RBAK Antibody Titration: 0.2-1 ug/ml ELISA Titer: 1:1562500 Positive Control: HepG2 cell lysate



Rabbit Anti-RBAK Antibody
Catalog Number: ARP32972
Lot Number: QC2790
Paraffin Embedded Tissue: Human Kidney
Cells with Positive label: Epithelial cells of renal tubule (Indicated with Arrows)
Antibody Concentration: 4.0-8.0 µg/ml
Magnification: 400X

Immunohistochemistry

Image 2. Human kidney