



[Go to Product page](#)

Datasheet for ABIN2777688

anti-KDM4C antibody (C-Term)

2 Images

1 Publication

Overview

Quantity:	100 µL
Target:	KDM4C
Binding Specificity:	C-Term
Reactivity:	Human, Mouse, Rat, Rabbit, Cow, Dog, Horse, Pig, Guinea Pig
Host:	Rabbit
Clonality:	Polyclonal
Conjugate:	This KDM4C antibody is un-conjugated
Application:	Western Blotting (WB)

Product Details

Immunogen:	The immunogen is a synthetic peptide directed towards the middle region of human JMJD2C
Sequence:	CLCNLRGGAL KQTKNNKWAH VMCAVAVPEV RFTNVPERTQ IDVGRIPLQR
Predicted Reactivity:	Cow: 100%, Dog: 100%, Guinea Pig: 93%, Horse: 100%, Human: 100%, Mouse: 100%, Pig: 100%, Rabbit: 100%, Rat: 100%
Characteristics:	This is a rabbit polyclonal antibody against JMJD2C. It was validated on Western Blot.
Purification:	Affinity Purified

Target Details

Target:	KDM4C
Alternative Name:	JMJD2C (KDM4C Products)

Target Details

Background:	<p>JMJD2C is a member of the Jumonji domain 2 (JMJD2) family. It contains one JmjC domain, one JmjN domain, two PHD-type zinc fingers, and two Tudor domains. This nuclear protein functions as a trimethylation-specific demethylase, converting specific trimethylated histone residues to the dimethylated form. Chromosomal aberrations and increased transcriptional expression of this gene are associated with esophageal squamous cell carcinoma.</p> <p>Alias Symbols: FLJ25949, GASC1, JHDM3C, JMJD2C, KIAA0780, bA146B14.1</p> <p>Protein Interaction Partner: UBC, HIST2H3C, HDAC3, PPARG, HDAC1, H3F3A, HIST1H3A, KDM4C, KDM4A,</p> <p>Protein Size: 813</p>
Molecular Weight:	92 kDa
Gene ID:	23081
NCBI Accession:	NM_001146695 , NP_001140167
UniProt:	F5H347
Pathways:	Nuclear Hormone Receptor Binding , Warburg Effect

Application Details

Application Notes:	Optimal working dilutions should be determined experimentally by the investigator.
Comment:	Antigen size: 813 AA
Restrictions:	For Research Use only

Handling

Format:	Liquid
Concentration:	Lot specific
Buffer:	Liquid. Purified antibody supplied in 1x PBS buffer with 0.09 % (w/v) sodium azide and 2 % sucrose.
Preservative:	Sodium azide
Precaution of Use:	This product contains Sodium azide: a POISONOUS AND HAZARDOUS SUBSTANCE which should be handled by trained staff only.
Handling Advice:	Avoid repeated freeze-thaw cycles.
Storage:	-20 °C

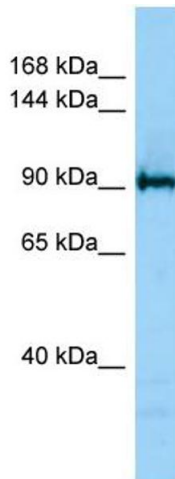
Handling

Storage Comment: For short term use, store at 2-8°C up to 1 week. For long term storage, store at -20°C in small aliquots to prevent freeze-thaw cycles.

Publications

Product cited in: Gerhard, Wagner, Feingold, Shenmen, Grouse, Schuler, Klein, Old, Rasooly, Good, Guyer, Peck, Derge, Lipman, Collins, Jang, Sherry, Feolo, Misquitta, Lee, Rotmistrovsky, Greenhut, Schaefer, Buetow et al.: "The status, quality, and expansion of the NIH full-length cDNA project: the Mammalian Gene Collection (MGC). ..." in: **Genome research**, Vol. 14, Issue 10B, pp. 2121-7, (2004) ([PubMed](#)).

Images



Western Blotting

Image 1. Host: Rabbit Target Name: JMJD2C Antibody Dilution: 1.0ug/ml Sample Type: Jurkat cell lysate

JMJD2C



Host: Rabbit
Target Name: JMJD2C
Sample Type: Human Fetal Lung
Antibody Dilution: 1ug/ml

Western Blotting

Image 2. Host: Rabbit Target Name: JMJD2C Sample Tissue: Human Fetal Lung Antibody Dilution: 1.0ug/ml