

Datasheet for ABIN2777691
anti-TBC1D2B antibody (Middle Region)[Go to Product page](#)

1 Image

Overview

Quantity:	100 µL
Target:	TBC1D2B
Binding Specificity:	Middle Region
Reactivity:	Cow, Dog, Guinea Pig, Horse, Human, Mouse, Rabbit, Rat
Host:	Rabbit
Clonality:	Polyclonal
Conjugate:	This TBC1D2B antibody is un-conjugated
Application:	Western Blotting (WB)

Product Details

Immunogen:	The immunogen is a synthetic peptide directed towards the middle region of human TBC1D2B
Sequence:	KYSSLEAKLC QIESKYLILL QEMKTPVCSE DQGPTREVIA QLLEDALQVE
Predicted Reactivity:	Cow: 79%, Dog: 79%, Guinea Pig: 86%, Horse: 79%, Human: 100%, Mouse: 79%, Rabbit: 86%, Rat: 93%
Characteristics:	This is a rabbit polyclonal antibody against TBC1D2B. It was validated on Western Blot.
Purification:	Affinity Purified

Target Details

Target:	TBC1D2B
Alternative Name:	TBC1D2B (TBC1D2B Products)

Target Details

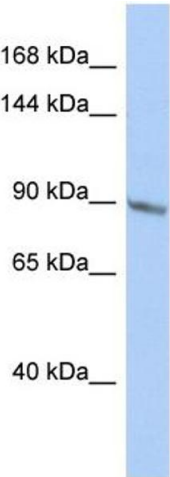
Background:	Protein Size: 837
Molecular Weight:	92 kDa
Gene ID:	23102
NCBI Accession:	NM_015079 , NP_055894
UniProt:	Q9UPU7

Application Details

Application Notes:	Optimal working dilution should be determined by the investigator.
Restrictions:	For Research Use only

Handling

Format:	Liquid
Concentration:	1 mg/mL
Buffer:	Liquid. Purified antibody supplied in 1x PBS buffer with 0.09 % (w/v) sodium azide and 2 % sucrose.
Preservative:	Sodium azide
Precaution of Use:	This product contains Sodium azide: a POISONOUS AND HAZARDOUS SUBSTANCE which should be handled by trained staff only.
Handling Advice:	Avoid repeat freeze-thaw cycles.
Storage:	-20 °C
Storage Comment:	For short term use, store at 2-8°C up to 1 week. For long term storage, store at -20°C in small aliquots to prevent freeze-thaw cycles.



Western Blotting

Image 1. Host: Rabbit Target Name: TBC1D2B Sample Type: HepG2 Whole cell lysates Antibody Dilution: 1.0ug/ml