

Datasheet for ABIN2777697

anti-ECD/SGT1 antibody (N-Term)[Go to Product page](#)**1** Image

Overview

Quantity:	100 µL
Target:	ECD/SGT1 (ECD)
Binding Specificity:	N-Term
Reactivity:	Human, Goat, Horse, Mouse, Rabbit, Cow, Dog, Guinea Pig, Rat
Host:	Rabbit
Clonality:	Polyclonal
Conjugate:	This ECD/SGT1 antibody is un-conjugated
Application:	Western Blotting (WB)

Product Details

Immunogen:	The immunogen is a synthetic peptide directed towards the N terminal region of human ECD
Sequence:	PAHMFQVTKF GDNIEDEWFI VYVIKQITKE FPELVARIED NDGEFLLEIA
Predicted Reactivity:	Cow: 100%, Dog: 100%, Goat: 100%, Guinea Pig: 100%, Horse: 100%, Human: 100%, Mouse: 93%, Rabbit: 100%, Rat: 93%
Characteristics:	This is a rabbit polyclonal antibody against ECD. It was validated on Western Blot using a cell lysate as a positive control.
Purification:	Affinity Purified

Target Details

Target:	ECD/SGT1 (ECD)
---------	----------------

Target Details

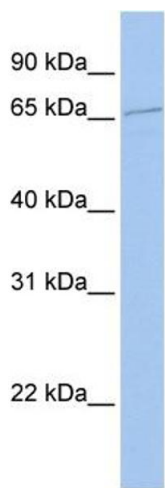
Alternative Name:	ECD (ECD Products)
Background:	<p>The exact function of ECD remains unknown.</p> <p>Alias Symbols: GCR2, HSGT1</p> <p>Protein Interaction Partner: TXNIP, TP53, UBC, PSMD2, PSMD1, PSMC5, PSMC3, PSEN2, PRPF8, UBD, EWSR1, NR3C1,</p> <p>Protein Size: 644</p>
Molecular Weight:	73 kDa
Gene ID:	11319
NCBI Accession:	NM_007265 , NP_009196
UniProt:	O95905
Pathways:	Regulation of Carbohydrate Metabolic Process

Application Details

Application Notes:	Optimal working dilutions should be determined experimentally by the investigator.
Comment:	Antigen size: 644 AA
Restrictions:	For Research Use only

Handling

Format:	Liquid
Concentration:	Lot specific
Buffer:	Liquid. Purified antibody supplied in 1x PBS buffer with 0.09 % (w/v) sodium azide and 2 % sucrose.
Preservative:	Sodium azide
Precaution of Use:	This product contains Sodium azide: a POISONOUS AND HAZARDOUS SUBSTANCE which should be handled by trained staff only.
Handling Advice:	Avoid repeated freeze-thaw cycles.
Storage:	-20 °C
Storage Comment:	For short term use, store at 2-8°C up to 1 week. For long term storage, store at -20°C in small aliquots to prevent freeze-thaw cycles.



Western Blotting

Image 1. WB Suggested Anti-ECD Antibody Titration: 0.2-1 ug/ml ELISA Titer: 1:312500 Positive Control: Jurkat cell lysate