

Datasheet for ABIN2777717
anti-PITX3 antibody (N-Term)

3 Images

[Go to Product page](#)

Overview

Quantity:	100 µL
Target:	PITX3
Binding Specificity:	N-Term
Reactivity:	Human, Mouse, Rat, Cow, Dog, Horse, Rabbit, Sheep, Guinea Pig, Zebrafish (Danio rerio)
Host:	Rabbit
Clonality:	Polyclonal
Conjugate:	This PITX3 antibody is un-conjugated
Application:	Western Blotting (WB), Immunohistochemistry (IHC)

Product Details

Immunogen:	The immunogen is a synthetic peptide directed towards the N terminal region of human PITX3
Sequence:	MEFGLLSEAE ARSPALSLSD AGTPHPQLPE HGCKGQEHSD SEKASASLPG
Predicted Reactivity:	Cow: 100%, Dog: 100%, Guinea Pig: 100%, Horse: 100%, Human: 100%, Mouse: 100%, Rabbit: 100%, Rat: 100%, Sheep: 100%, Zebrafish: 85%
Characteristics:	This is a rabbit polyclonal antibody against PITX3. It was validated on Western Blot using a cell lysate as a positive control.
Purification:	Affinity Purified

Target Details

Target:	PITX3
---------	-------

Target Details

Alternative Name: PITX3 ([PITX3 Products](#))

Background: PITX3 is a member of the RIEG/PITX homeobox family, which is in the bicoid class of homeodomain proteins. Members of this family act as transcription factors. Mutations of PITX3 have been associated with anterior segment mesenchymal dysgenesis (ASMD) and congenital cataracts. PITX3 is involved in lens formation during eye development. This gene encodes a member of the RIEG/PITX homeobox family, which is in the bicoid class of homeodomain proteins. Members of this family act as transcription factors. Mutations of this gene have been associated with anterior segment mesenchymal dysgenesis (ASMD) and congenital cataracts. This protein is involved in lens formation during eye development. This gene encodes a member of the RIEG/PITX homeobox family, which is in the bicoid class of homeodomain proteins. Members of this family act as transcription factors. This protein is involved in lens formation during eye development. Mutations of this gene have been associated with anterior segment mesenchymal dysgenesis and congenital cataracts.

Publication Note: This RefSeq record includes a subset of the publications that are available for this gene. Please see the Entrez Gene record to access additional publications.

Alias Symbols: CTPP4, MGC12766, PTX3

Protein Interaction Partner: PARK7, MTA1, SFPQ, NONO,

Protein Size: 302

Molecular Weight: 32 kDa

Gene ID: 5309

NCBI Accession: [NM_005029](#), [NP_005020](#)

UniProt: [O75364](#)

Application Details

Application Notes: Optimal working dilutions should be determined experimentally by the investigator.

Comment: Antigen size: 302 AA

Restrictions: For Research Use only

Handling

Format: Liquid

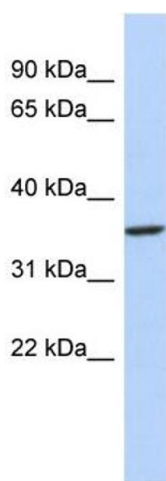
Concentration: Lot specific

Buffer: Liquid. Purified antibody supplied in 1x PBS buffer with 0.09 % (w/v) sodium azide and 2 %

Handling

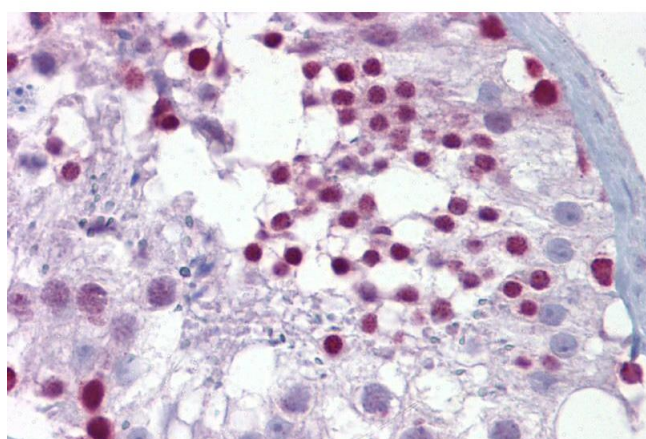
	sucrose.
Preservative:	Sodium azide
Precaution of Use:	This product contains Sodium azide: a POISONOUS AND HAZARDOUS SUBSTANCE which should be handled by trained staff only.
Handling Advice:	Avoid repeated freeze-thaw cycles.
Storage:	-20 °C
Storage Comment:	For short term use, store at 2-8°C up to 1 week. For long term storage, store at -20°C in small aliquots to prevent freeze-thaw cycles.

Images



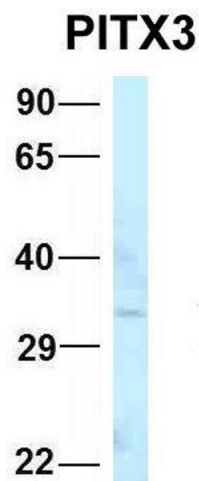
Western Blotting

Image 1. WB Suggested Anti-PITX3 Antibody Titration: 0.2-1 ug/ml ELISA Titer: 1:12500 Positive Control: MCF7 cell lysate



Immunohistochemistry

Image 2. Immunohistochemistry with Testis tissue at an antibody concentration of 5µg/ml using anti-PITX3 antibody (ARP33033_P050)



Western Blotting

Image 3. Host: Rabbit Target Name: PITX3 Sample Type: 293T Antibody Dilution: 1.0ug/ml PITX3 is supported by BioGPS gene expression data to be expressed in HEK293T