

Datasheet for ABIN2777719

**anti-Phospholipase D2 antibody (Middle Region)****2** Images[Go to Product page](#)

## Overview

Quantity:	100 µL
Target:	Phospholipase D2 (PLD2)
Binding Specificity:	Middle Region
Reactivity:	Human, Rat, Cow, Horse, Pig
Host:	Rabbit
Clonality:	Polyclonal
Conjugate:	This Phospholipase D2 antibody is un-conjugated
Application:	Western Blotting (WB)

## Product Details

Immunogen:	The immunogen is a synthetic peptide directed towards the middle region of human PLD2
Sequence:	DLHYRLTDLG DSSESAASQP PTPRPDSPAT PDLSHNQFFW LGKDYSNLIT
Predicted Reactivity:	Cow: 100%, Horse: 92%, Human: 100%, Pig: 92%, Rat: 92%
Characteristics:	This is a rabbit polyclonal antibody against PLD2. It was validated on Western Blot using a cell lysate as a positive control.
Purification:	Affinity Purified

## Target Details

Target:	Phospholipase D2 (PLD2)
Alternative Name:	PLD2 ( <a href="#">PLD2 Products</a> )

## Target Details

**Background:** Phosphatidylcholine (PC)-specific phospholipases D (PLDs, EC 3.1.4.4) catalyze the hydrolysis of PC to produce phosphatidic acid and choline. Activation of PC-specific PLDs occurs as a consequence of agonist stimulation of both tyrosine kinase and G protein-coupled receptors. PC-specific PLDs have been proposed to function in regulated secretion, cytoskeletal reorganization, transcriptional regulation, and cell cycle control. Phosphatidylcholine (PC)-specific phospholipases D (PLDs, EC 3.1.4.4) catalyze the hydrolysis of PC to produce phosphatidic acid and choline. Activation of PC-specific PLDs occurs as a consequence of agonist stimulation of both tyrosine kinase and G protein-coupled receptors. PC-specific PLDs have been proposed to function in regulated secretion, cytoskeletal reorganization, transcriptional regulation, and cell cycle control. [supplied by OMIM]. Publication Note: This RefSeq record includes a subset of the publications that are available for this gene. Please see the Entrez Gene record to access additional publications. PRIMARYREFSEQ\_SPAN PRIMARY\_IDENTIFIER PRIMARY\_SPAN COMP 1-14 AF033850.1 61-74 15-614 BC015033.1 1-600 615-1279 BC056871.1 549-1213 1280-1830 BC015033.1 1266-1816 1831-1995 BC056871.1 1765-1929 1996-3489 BC015033.1 1982-3475

**Alias Symbols:** -

**Protein Interaction Partner:** UBC, RPS6KB1, CUL3, AQP3, RPTOR, PEA15, PIP5K1A, STXBP1, DPYSL2, BIN1, MTOR, CAV1, AMPH, OPRM1, ALDOC, GM2A, PRKCD, PRKCA, PLCG1, LCK, GAPDH, FYN, EGFR, CSK, ALDOA, ARF1, ACTB, ACTN1, CAV2, SRC,

**Protein Size:** 933

**Molecular Weight:** 106 kDa

**Gene ID:** 5338

**NCBI Accession:** [NM\\_002663](#), [NP\\_002654](#)

**UniProt:** [O14939](#)

**Pathways:** [RTK Signaling](#), [Regulation of Leukocyte Mediated Immunity](#), [Positive Regulation of Immune Effector Process](#), [Regulation of G-Protein Coupled Receptor Protein Signaling](#)

## Application Details

**Application Notes:** Optimal working dilutions should be determined experimentally by the investigator.

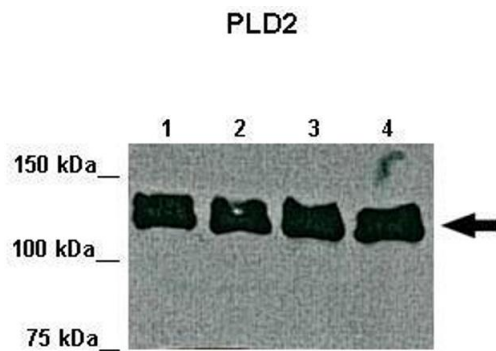
**Comment:** Antigen size: 933 AA

**Restrictions:** For Research Use only

## Handling

Format:	Liquid
Concentration:	Lot specific
Buffer:	Liquid. Purified antibody supplied in 1x PBS buffer with 0.09 % (w/v) sodium azide and 2 % sucrose.
Preservative:	Sodium azide
Precaution of Use:	This product contains Sodium azide: a POISONOUS AND HAZARDOUS SUBSTANCE which should be handled by trained staff only.
Handling Advice:	Avoid repeated freeze-thaw cycles.
Storage:	-20 °C
Storage Comment:	For short term use, store at 2-8°C up to 1 week. For long term storage, store at -20°C in small aliquots to prevent freeze-thaw cycles.

## Images



See Immunoblot 2 Data and Customer Feedback for more Information



### Western Blotting

**Image 1.** Lanes: Lane 1: 22ug mouse liver cell lysate Lane 2: 22ug mouse liver cell lysate Lane 3: 22ug mouse liver cell lysate Lane 4: 22ug mouse liver cell lysate Primary Antibody Dilution: 1:1000 Secondary Antibody: Anti-rabbit-HRP Secondary Antibody Dilution: 1:5000 Gene Name: PLD2 Submitted by: Chongben Zhang, UNC, Chapel Hill

### Western Blotting

**Image 2.** WB Suggested Anti-PLD2 Antibody Titration: 0.2-1 ug/ml ELISA Titer: 1:62500 Positive Control: Transfected 293T