



[Go to Product page](#)

Datasheet for ABIN2777727

anti-SLC38A2 antibody (N-Term)

2 Images

2 Publications

Overview

Quantity:	100 µL
Target:	SLC38A2
Binding Specificity:	N-Term
Reactivity:	Human, Mouse, Rat, Pig, Rabbit, Cow, Dog, Guinea Pig, Horse
Host:	Rabbit
Clonality:	Polyclonal
Conjugate:	This SLC38A2 antibody is un-conjugated
Application:	Western Blotting (WB)

Product Details

Immunogen:	The immunogen is a synthetic peptide directed towards the N terminal region of human SLC38A2
Sequence:	AALKSHYADV DPENQNFLLE SNLGKKKYET EFHPGTTSTFG MSVFNLSNAI
Predicted Reactivity:	Cow: 93%, Dog: 93%, Guinea Pig: 93%, Horse: 93%, Human: 100%, Mouse: 93%, Pig: 100%, Rabbit: 93%, Rat: 93%
Characteristics:	This is a rabbit polyclonal antibody against SLC38A2. It was validated on Western Blot using a cell lysate as a positive control.
Purification:	Affinity Purified

Target Details

Target:	SLC38A2
---------	---------

Target Details

Alternative Name:	SLC38A2 (SLC38A2 Products)
Background:	<p>Under hypertonic conditions the induction of SLC38A2/SNAT2 leads to the stimulation of transport system A and to the increase in the cell content of amino acids. Its amino acid response element, along with a nearby conserved CAAT box, has enhancer activity in that it functions in an orientation and position independent manner, and it confers regulated transcription to a heterologous promoter.</p> <p>Alias Symbols: ATA2, KIAA1382, PRO1068, SAT2, SNAT2</p> <p>Protein Interaction Partner: UBC, APP, MCU, FLOT1, COX5A, ELAVL1, STX11,</p> <p>Protein Size: 506</p>
Molecular Weight:	56 kDa
Gene ID:	54407
NCBI Accession:	NM_018976 , NP_061849
UniProt:	Q96QD8
Pathways:	Dicarboxylic Acid Transport

Application Details

Application Notes:	Optimal working dilutions should be determined experimentally by the investigator.
Comment:	Antigen size: 506 AA
Restrictions:	For Research Use only

Handling

Format:	Liquid
Concentration:	Lot specific
Buffer:	Liquid. Purified antibody supplied in 1x PBS buffer with 0.09 % (w/v) sodium azide and 2 % sucrose.
Preservative:	Sodium azide
Precaution of Use:	This product contains Sodium azide: a POISONOUS AND HAZARDOUS SUBSTANCE which should be handled by trained staff only.
Handling Advice:	Avoid repeated freeze-thaw cycles.
Storage:	-20 °C

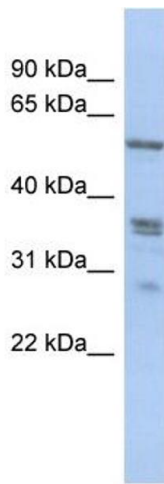
Handling

Storage Comment: For short term use, store at 2-8°C up to 1 week. For long term storage, store at -20°C in small aliquots to prevent freeze-thaw cycles.

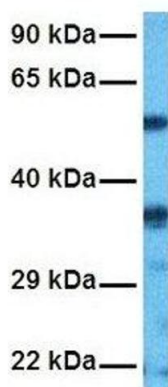
Publications

Product cited in: Sun, Zhou, Yin, Ding, Zhong: "Silencing of ZNF217 gene influences the biological behavior of a human ovarian cancer cell line." in: **International journal of oncology**, Vol. 32, Issue 5, pp. 1065-71, (2008) ([PubMed](#)).

Images



SLC38A2



Western Blotting

Image 1. WB Suggested Anti-SLC38A2 Antibody Titration: 0.2-1 ug/ml ELISA Titer: 1:1562500 Positive Control: HT1080 cell lysate SLC38A2 is strongly supported by BioGPS gene expression data to be expressed in Human HT1080 cells

Western Blotting

Image 2. Host: Rabbit Target Name: SLC38A2 Sample Tissue: Human HepG2 Antibody Dilution: 1.0ug/ml