

Datasheet for ABIN2777729
anti-POU3F1 antibody (N-Term)[Go to Product page](#)

2 Images

2 Publications

Overview

Quantity:	100 µL
Target:	POU3F1
Binding Specificity:	N-Term
Reactivity:	Human, Mouse, Rat, Dog, Cow, Guinea Pig, Rabbit
Host:	Rabbit
Clonality:	Polyclonal
Conjugate:	This POU3F1 antibody is un-conjugated
Application:	Western Blotting (WB), Immunohistochemistry (IHC)

Product Details

Immunogen:	The immunogen is a synthetic peptide directed towards the N terminal region of human POU3F1
Sequence:	YLPRGPGGGA GGTGPLMHPD AAAAAAAAAAE RLHAGAAYRE VQKLMHHEWL
Predicted Reactivity:	Cow: 100%, Dog: 100%, Guinea Pig: 100%, Human: 100%, Mouse: 100%, Rabbit: 100%, Rat: 100%
Characteristics:	This is a rabbit polyclonal antibody against POU3F1. It was validated on Western Blot and immunohistochemistry.
Purification:	Protein A purified

Target Details

Target:	POU3F1
---------	--------

Target Details

Alternative Name:	POU3F1 (POU3F1 Products)
Background:	<p>POU3F1 is a member of the POU domain family of proteins, and regulates events during neurogenesis and myelination.</p> <p>Alias Symbols: OCT6, OTF6, SCIP</p> <p>Protein Interaction Partner: HMGA1, POU3F4, HMGB2,</p> <p>Protein Size: 448</p>
Molecular Weight:	45 kDa
Gene ID:	5453
NCBI Accession:	NM_002699 , NP_002690
UniProt:	Q03052

Application Details

Application Notes:	Optimal working dilutions should be determined experimentally by the investigator.
Comment:	Antigen size: 448 AA
Restrictions:	For Research Use only

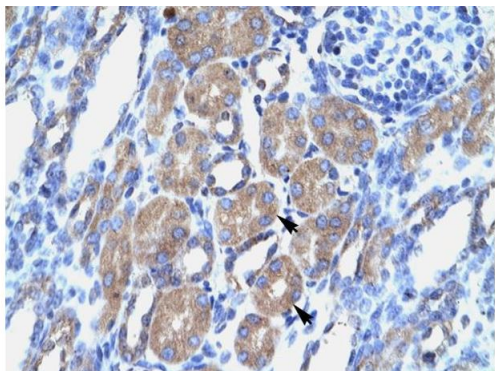
Handling

Format:	Liquid
Concentration:	Lot specific
Buffer:	Liquid. Purified antibody supplied in 1x PBS buffer with 0.09 % (w/v) sodium azide and 2 % sucrose.
Preservative:	Sodium azide
Precaution of Use:	This product contains Sodium azide: a POISONOUS AND HAZARDOUS SUBSTANCE which should be handled by trained staff only.
Handling Advice:	Avoid repeated freeze-thaw cycles.
Storage:	-20 °C
Storage Comment:	For short term use, store at 2-8°C up to 1 week. For long term storage, store at -20°C in small aliquots to prevent freeze-thaw cycles.

Publications

Product cited in: Gerhard, Wagner, Feingold, Shenmen, Grouse, Schuler, Klein, Old, Rasooly, Good, Guyer, Peck, Derge, Lipman, Collins, Jang, Sherry, Feolo, Misquitta, Lee, Rotmistrovsky, Greenhut, Schaefer, Buetow et al.: "The status, quality, and expansion of the NIH full-length cDNA project: the Mammalian Gene Collection (MGC). ..." in: **Genome research**, Vol. 14, Issue 10B, pp. 2121-7, (2004) ([PubMed](#)).

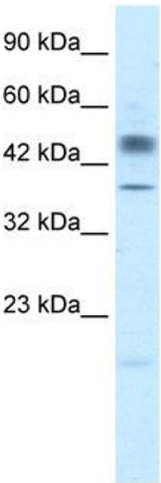
Images



Rabbit Anti-POU3F1 Antibody
Catalog Number: ARP33061
Lot Number: QC3506
Paraffin Embedded Tissue: Human Kidney
Cells with Positive label: Epithelial cells of renal tubule (Indicated with Arrows)
Antibody Concentration: 4.0-8.0 µg/ml
Magnification: 400X

Immunohistochemistry

Image 1. Human kidney



Western Blotting

Image 2. WB Suggested Anti-POU3F1 Antibody Titration:
2.5ug/ml Positive Control: Jurkat cell lysate