

Datasheet for ABIN2777737  
**anti-PHKG2 antibody (N-Term)**[Go to Product page](#)

## 3 Images

## Overview

Quantity:	100 µL
Target:	PHKG2
Binding Specificity:	N-Term
Reactivity:	Human, Mouse, Rat, Dog, Cow, Goat, Guinea Pig, Rabbit, Sheep, Zebrafish (Danio rerio)
Host:	Rabbit
Clonality:	Polyclonal
Conjugate:	This PHKG2 antibody is un-conjugated
Application:	Western Blotting (WB), Immunohistochemistry (IHC)

## Product Details

Immunogen:	The immunogen is a synthetic peptide directed towards the N terminal region of human PHKG2
Sequence:	EDELPDWAAA KEFYQKYDPK DVIGRGVSSV VRRCVHRATG HEFAVKIMEV
Predicted Reactivity:	Cow: 100%, Dog: 100%, Goat: 100%, Guinea Pig: 100%, Human: 100%, Mouse: 93%, Rabbit: 100%, Rat: 100%, Sheep: 100%, Zebrafish: 93%
Characteristics:	This is a rabbit polyclonal antibody against PHKG2. It was validated on Western Blot and immunohistochemistry.
Purification:	Affinity Purified

## Target Details

Target:	PHKG2
---------	-------

## Target Details

Alternative Name:	PHKG2 ( <a href="#">PHKG2 Products</a> )
Background:	<p>Mutations in PHKG2 along with PHKA2 and PHKB, all three different genes of phosphorylase kinase (Phk) subunits, can give rise to glycogen storage disease of the liver. The autosomal-recessive, liver-specific variant of Phk deficiency is caused by mutations in the gene encoding the testis/liver isoform of the catalytic gamma subunit, PHKG2.</p> <p>Alias Symbols: GSD9C</p> <p>Protein Interaction Partner: HAUS2, VCP, TP53, CDKN1A, UBC, PRKDC, PHKA2, PHKA1, ATAD3C, DRG1, NDUFA4, TNPO1, FASN, ACACA, GCN1L1, YME1L1, STUB1, SCO2, NPEPPS, VDAC2, ZC3H15, ATAD3A, BZW2, UBE3A, PHKG1,</p> <p>Protein Size: 406</p>
Molecular Weight:	46 kDa
Gene ID:	5261
NCBI Accession:	<a href="#">NM_000294</a> , <a href="#">NP_000285</a>
UniProt:	<a href="#">P15735</a>
Pathways:	<a href="#">Cellular Glucan Metabolic Process</a> , <a href="#">Regulation of Carbohydrate Metabolic Process</a>

## Application Details

Application Notes:	Optimal working dilutions should be determined experimentally by the investigator.
Comment:	Antigen size: 406 AA
Restrictions:	For Research Use only

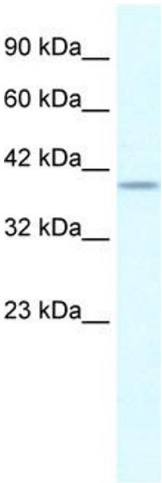
## Handling

Format:	Liquid
Concentration:	Lot specific
Buffer:	Liquid. Purified antibody supplied in 1x PBS buffer with 0.09 % (w/v) sodium azide and 2 % sucrose.
Preservative:	Sodium azide
Precaution of Use:	This product contains Sodium azide: a POISONOUS AND HAZARDOUS SUBSTANCE which should be handled by trained staff only.
Handling Advice:	Avoid repeated freeze-thaw cycles.

## Handling

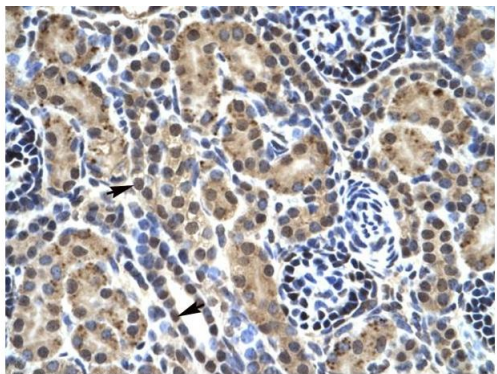
Storage:	-20 °C
Storage Comment:	For short term use, store at 2-8°C up to 1 week. For long term storage, store at -20°C in small aliquots to prevent freeze-thaw cycles.

## Images



### Western Blotting

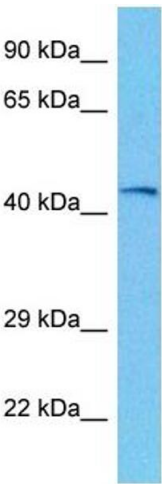
**Image 1.** WB Suggested Anti-PHKG2 Antibody Titration: 0.2-1 ug/ml Positive Control: HepG2 cell lysate PHKG2 is supported by BioGPS gene expression data to be expressed in HepG2



Rabbit Anti-PHKG2 Antibody  
Catalog Number: ARP33072  
Lot Number: QC2707  
Paraffin Embedded Tissue: Human Kidney  
Cells with Positive label: Epithelial cells of renal tubule (Indicated with Arrows)  
Antibody Concentration: 4.0-8.0 µg/ml  
Magnification: 400X

### Immunohistochemistry

**Image 2.** Human kidney



### Western Blotting

**Image 3.** Host: Mouse Target Name: PHKG2 Sample Tissue: Mouse Kidney Antibody Dilution: 1ug/ml