

Datasheet for ABIN2777743
anti-MMP 9 antibody (N-Term)[Go to Product page](#)

5 Images

6 Publications

Overview

| | |
|----------------------|--|
| Quantity: | 100 µL |
| Target: | MMP 9 (MMP9) |
| Binding Specificity: | N-Term |
| Reactivity: | Human, Rat, Mouse, Rabbit, Cow, Dog, Horse, Zebrafish (Danio rerio), Guinea Pig, Sheep |
| Host: | Rabbit |
| Clonality: | Polyclonal |
| Conjugate: | This MMP 9 antibody is un-conjugated |
| Application: | Western Blotting (WB), Immunohistochemistry (IHC) |

Product Details

| | |
|-----------------------|--|
| Immunogen: | The immunogen is a synthetic peptide directed towards the N terminal region of human MMP9 |
| Sequence: | VAEHGDGYPF DGKDGLLAHA FPPGPGIQQD AHFDDDELWS LGKGVVVPTR |
| Predicted Reactivity: | Cow: 100%, Dog: 100%, Guinea Pig: 100%, Horse: 100%, Human: 100%, Mouse: 100%, Rabbit: 100%, Rat: 100%, Sheep: 100%, Zebrafish: 100% |
| Characteristics: | This is a rabbit polyclonal antibody against MMP9. It was validated on Western Blot using a cell lysate as a positive control. |
| Purification: | Protein A purified |

Target Details

| | |
|---------|--------------|
| Target: | MMP 9 (MMP9) |
|---------|--------------|

Target Details

| | |
|-------------------|---|
| Alternative Name: | MMP9 (MMP9 Products) |
| Background: | <p>Proteins of the matrix metalloproteinase (MMP) family are involved in the breakdown of extracellular matrix in normal physiological processes, such as embryonic development, reproduction, and tissue remodeling, as well as in disease processes, such as arthritis and metastasis. Most MMP's are secreted as inactive proproteins which are activated when cleaved by extracellular proteinases. The enzyme encoded by MMP9 degrades type IV and V collagens. Studies in rhesus monkeys suggest that the enzyme is involved in IL-8-induced mobilization of hematopoietic progenitor cells from bone marrow, and murine studies suggest a role in tumor-associated tissue remodeling.</p> <p>Alias Symbols: GELB, CLG4B, MMP-9, MANDP2</p> <p>Protein Interaction Partner: CXCL5, PZP, MMP26, RECK, KISS1, PRSS2, EPHB2, BTC, LCN2, COL4A6, COL4A5, TIMP3, THBS2, THBS1, MMP10, MMP7, PLG, CXCL1, TFPI, CXCL8, FN1, MMP9, COL1A2, COL1A1, COL4A4, COL4A1, COL4A2, COL4A3, HAPLN1, CD44, AREG, TGFB1, CXCL6,</p> <p>Protein Size: 707</p> |
| Molecular Weight: | 78 kDa |
| Gene ID: | 4318 |
| NCBI Accession: | NM_004994 , NP_004985 |
| UniProt: | P14780 |
| Pathways: | Cellular Response to Molecule of Bacterial Origin , Positive Regulation of Immune Effector Process , CXCR4-mediated Signaling Events |

Application Details

| | |
|--------------------|--|
| Application Notes: | Optimal working dilutions should be determined experimentally by the investigator. |
| Comment: | Antigen size: 707 AA |
| Restrictions: | For Research Use only |

Handling

| | |
|----------------|--|
| Format: | Liquid |
| Concentration: | Lot specific |
| Buffer: | Liquid. Purified antibody supplied in 1x PBS buffer with 0.09 % (w/v) sodium azide and 2 % |

Handling

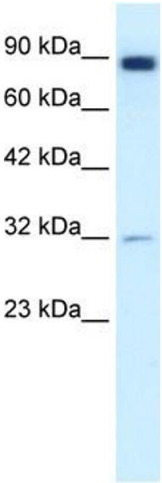
| | |
|--------------------|---|
| | sucrose. |
| Preservative: | Sodium azide |
| Precaution of Use: | This product contains Sodium azide: a POISONOUS AND HAZARDOUS SUBSTANCE which should be handled by trained staff only. |
| Handling Advice: | Avoid repeated freeze-thaw cycles. |
| Storage: | -20 °C |
| Storage Comment: | For short term use, store at 2-8°C up to 1 week. For long term storage, store at -20°C in small aliquots to prevent freeze-thaw cycles. |

Publications

| | |
|-------------------|--|
| Product cited in: | Gerhard, Wagner, Feingold, Shenmen, Grouse, Schuler, Klein, Old, Rasooly, Good, Guyer, Peck, Derge, Lipman, Collins, Jang, Sherry, Feolo, Misquitta, Lee, Rotmistrovsky, Greenhut, Schaefer, Buetow et al.: "The status, quality, and expansion of the NIH full-length cDNA project: the Mammalian Gene Collection (MGC). ..." in: Genome research , Vol. 14, Issue 10B, pp. 2121-7, (2004) (PubMed). |
|-------------------|--|

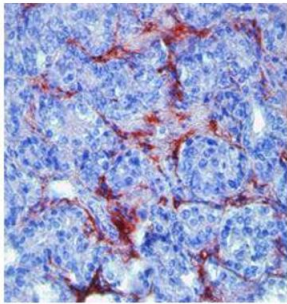
There are more publications referencing this product on: [Product page](#)

Images



Western Blotting

Image 1. WB Suggested Anti-MMP9 Antibody Titration:
1.25ug/ml Positive Control: K562 cell lysate

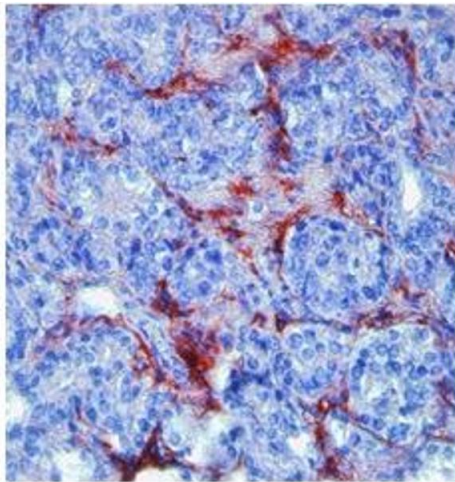


MMP9 (ARP33090_T100)

MMP9 in prostate cancer was detected using HRP/AEC red color stain.

Recommended for IHC on mouse, rat and human tissues. Working dilution 2-15 ug/mL

Image 2.



Immunohistochemistry

Image 3. MMP9 in human prostate cancer was detected using HRP/AEC red color stain. Dilution : 2-15 ug/mL

Please check the [product details page](#) for more images. Overall 5 images are available for ABIN2777743.