



[Go to Product page](#)

Datasheet for ABIN2777747

## anti-PNMA1 antibody (Middle Region)

1 Image

1 Publication

### Overview

Quantity:	100 µL
Target:	PNMA1
Binding Specificity:	Middle Region
Reactivity:	Human, Mouse, Rat, Cow, Dog, Horse, Rabbit, Guinea Pig, Pig
Host:	Rabbit
Clonality:	Polyclonal
Conjugate:	This PNMA1 antibody is un-conjugated
Application:	Western Blotting (WB)

### Product Details

Immunogen:	The immunogen is a synthetic peptide directed towards the middle region of human PNMA1
Sequence:	LNTYQNPGEK LSAYVIRLEP LLQKVVEKGA IDKDNVNQAR LEQVIAGANH
Predicted Reactivity:	Cow: 100%, Dog: 100%, Guinea Pig: 92%, Horse: 100%, Human: 100%, Mouse: 85%, Pig: 100%, Rabbit: 100%, Rat: 92%
Characteristics:	This is a rabbit polyclonal antibody against PNMA1. It was validated on Western Blot using a cell lysate as a positive control.
Purification:	Affinity Purified

### Target Details

Target:	PNMA1
---------	-------

## Target Details

---

Alternative Name:	PNMA1 ( <a href="#">PNMA1 Products</a> )
Background:	<p>PNMA1 encodes a protein that is highly restricted to the brain and testis. Anti-PNMA1 reacts mainly with subnuclear elements (including the nucleoli) and to a lesser degree the cytoplasm.</p> <p>Alias Symbols: MA1</p> <p>Protein Interaction Partner: RUSC1, CARHSP1, ZFYVE26, TRIM42, RTP5, KANSL1, TTC9C, RSPH9, CFAP53, ZCCHC12, TCEANC, ZNF564, SLC25A48, SHISA3, RPP25L, MRPL10, ZG16B, PNMA5, FMNL2, MED8, C5orf30, GTPBP10, FBF1, SMIM3, URB1-AS1, PNMA6A, ANKRD36BP1, BEX2, NUDT16L1, POLDIP3, SPATC1L, ENKD1</p> <p>Protein Size: 353</p>
Molecular Weight:	40 kDa
Gene ID:	9240
NCBI Accession:	<a href="#">NM_006029</a> , <a href="#">NP_006020</a>
UniProt:	<a href="#">Q8ND90</a>

## Application Details

---

Application Notes:	Optimal working dilutions should be determined experimentally by the investigator.
Comment:	Antigen size: 353 AA
Restrictions:	For Research Use only

## Handling

---

Format:	Liquid
Concentration:	Lot specific
Buffer:	Liquid. Purified antibody supplied in 1x PBS buffer with 0.09 % (w/v) sodium azide and 2 % sucrose.
Preservative:	Sodium azide
Precaution of Use:	This product contains Sodium azide: a POISONOUS AND HAZARDOUS SUBSTANCE which should be handled by trained staff only.
Handling Advice:	Avoid repeated freeze-thaw cycles.
Storage:	-20 °C
Storage Comment:	For short term use, store at 2-8°C up to 1 week. For long term storage, store at -20°C in small

## Handling

---

aliquots to prevent freeze-thaw cycles.

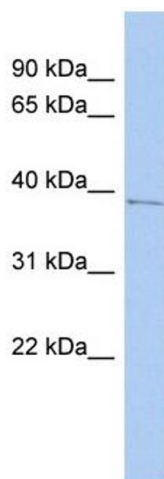
## Publications

---

Product cited in: Gerhard, Wagner, Feingold, Shenmen, Grouse, Schuler, Klein, Old, Rasooly, Good, Guyer, Peck, Derge, Lipman, Collins, Jang, Sherry, Feolo, Misquitta, Lee, Rotmistrovsky, Greenhut, Schaefer, Buetow et al.: "The status, quality, and expansion of the NIH full-length cDNA project: the Mammalian Gene Collection (MGC). ..." in: **Genome research**, Vol. 14, Issue 10B, pp. 2121-7, (2004) ([PubMed](#)).

## Images

---



### Western Blotting

**Image 1.** WB Suggested Anti-PNMA1 Antibody Titration: 0.2-1 ug/ml ELISA Titer: 1:312500 Positive Control: HT1080 cell lysate PNMA1 is supported by BioGPS gene expression data to be expressed in HT1080