

Datasheet for ABIN2777750

anti-MAP4K5 antibody (Middle Region)[Go to Product page](#)**1** Image

Overview

Quantity:	100 µL
Target:	MAP4K5
Binding Specificity:	Middle Region
Reactivity:	Human, Mouse, Rat, Cow, Dog, Guinea Pig, Horse, Rabbit, Zebrafish (Danio rerio), Saccharomyces cerevisiae
Host:	Rabbit
Clonality:	Polyclonal
Conjugate:	This MAP4K5 antibody is un-conjugated
Application:	Western Blotting (WB)

Product Details

Immunogen:	The immunogen is a synthetic peptide directed towards the middle region of human MAP4K5
Sequence:	QGKSFKSDEV TQEISDETRV FRLLGSDRVV VLESRP TENP TAHSNLYILA
Predicted Reactivity:	Cow: 100%, Dog: 100%, Guinea Pig: 100%, Horse: 100%, Human: 100%, Mouse: 100%, Rabbit: 100%, Rat: 100%, Yeast: 77%, Zebrafish: 86%
Characteristics:	This is a rabbit polyclonal antibody against MAP4K5. It was validated on Western Blot using a cell lysate as a positive control.
Purification:	Affinity Purified

Target Details

Target:	MAP4K5
---------	--------

Target Details

Alternative Name:	MAP4K5 (MAP4K5 Products)
Background:	<p>MAP4K5 may play a role in the response to environmental stress. Appears to act upstream of the JUN N-terminal pathway. This gene encodes a member of the serine/threonine protein kinase family, that is highly similar to yeast SPS1/STE20 kinase. Yeast SPS1/STE20 functions near the beginning of the MAP kinase signal cascades that is essential for yeast pheromone response. This kinase was shown to activate Jun kinase in mammalian cells, which suggested a role in stress response. Two alternatively spliced transcript variants encoding the same protein have been described for this gene.</p> <p>Alias Symbols: GCKR, KHS, KHS1, MAPKKKK5</p> <p>Protein Interaction Partner: CRK, ELAVL1, UBC, NEDD4, SETDB1, ZNF440, COPS5, HCK, GRB2, TANK, CRKL, TRAF2, ABL1, BCR,</p> <p>Protein Size: 846</p>
Molecular Weight:	95 kDa
Gene ID:	11183
NCBI Accession:	NM_006575 , NP_006566
UniProt:	Q9Y4K4

Application Details

Application Notes:	Optimal working dilutions should be determined experimentally by the investigator.
Comment:	Antigen size: 846 AA
Restrictions:	For Research Use only

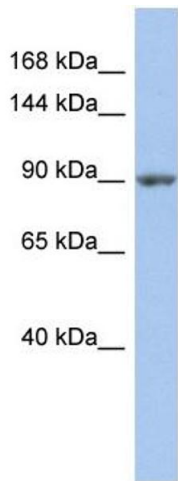
Handling

Format:	Liquid
Concentration:	Lot specific
Buffer:	Liquid. Purified antibody supplied in 1x PBS buffer with 0.09 % (w/v) sodium azide and 2 % sucrose.
Preservative:	Sodium azide
Precaution of Use:	This product contains Sodium azide: a POISONOUS AND HAZARDOUS SUBSTANCE which should be handled by trained staff only.
Handling Advice:	Avoid repeated freeze-thaw cycles.

Handling

Storage:	-20 °C
Storage Comment:	For short term use, store at 2-8°C up to 1 week. For long term storage, store at -20°C in small aliquots to prevent freeze-thaw cycles.

Images



Western Blotting

Image 1. WB Suggested Anti-MAP4K5 Antibody Titration: 0.2-1 ug/ml ELISA Titer: 1:62500 Positive Control: PANC1 cell lysate