

Datasheet for ABIN2777751
anti-MAP4K5 antibody (C-Term)



[Go to Product page](#)

1 Image

Overview

Quantity:	100 µL
Target:	MAP4K5
Binding Specificity:	C-Term
Reactivity:	Human, Mouse, Rat, Cow, Dog, Guinea Pig, Horse, Rabbit, Zebrafish (Danio rerio)
Host:	Rabbit
Clonality:	Polyclonal
Conjugate:	This MAP4K5 antibody is un-conjugated
Application:	Western Blotting (WB)

Product Details

Immunogen:	The immunogen is a synthetic peptide directed towards the C-terminal region of Human MAP4K5
Sequence:	KSDEVTQEIS DETRVFRLLG SDRVVVLESR PTENPTAHSN LYILAGHENS
Predicted Reactivity:	Cow: 100%, Dog: 100%, Guinea Pig: 100%, Horse: 100%, Human: 100%, Mouse: 93%, Rabbit: 100%, Rat: 100%, Zebrafish: 93%
Characteristics:	This is a rabbit polyclonal antibody against MAP4K5. It was validated on Western Blot.
Purification:	Affinity Purified

Target Details

Target:	MAP4K5
---------	--------

Target Details

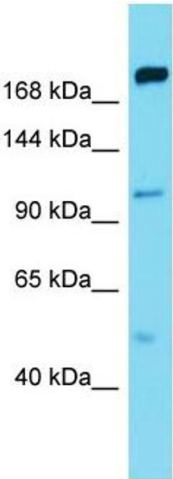
Alternative Name:	MAP4K5 (MAP4K5 Products)
Background:	<p>MAP4K5 may play a role in the response to environmental stress. Appears to act upstream of the JUN N-terminal pathway.</p> <p>Alias Symbols: GCKR, KHS, KHS1, MAPKKKK5</p> <p>Protein Interaction Partner: CRK, ELAVL1, UBC, NEDD4, SETDB1, ZNF440, COPS5, HCK, GRB2, TANK, CRKL, TRAF2, ABL1, BCR,</p> <p>Protein Size: 846</p>
Molecular Weight:	95 kDa
Gene ID:	11183
NCBI Accession:	NM_198794 , NP_942089
UniProt:	Q9Y4K4

Application Details

Restrictions:	For Research Use only
---------------	-----------------------

Handling

Format:	Liquid
Concentration:	1 mg/mL
Buffer:	Liquid. Purified antibody supplied in 1x PBS buffer with 0.09 % (w/v) sodium azide and 2 % sucrose.
Preservative:	Sodium azide
Precaution of Use:	This product contains Sodium azide: a POISONOUS AND HAZARDOUS SUBSTANCE which should be handled by trained staff only.
Handling Advice:	Avoid repeat freeze-thaw cycles.
Storage:	-20 °C
Storage Comment:	For short term use, store at 2-8°C up to 1 week. For long term storage, store at -20°C in small aliquots to prevent freeze-thaw cycles.



Western Blotting

Image 1. Host: Rabbit Target Name: MAP4K5 Sample Type: Thymus Tumor lysates Antibody Dilution: 1.0ug/ml