



Datasheet for ABIN2777752
anti-GPR75 antibody (Middle Region)



[Go to Product page](#)

3 Images

Overview

Quantity:	100 µL
Target:	GPR75
Binding Specificity:	Middle Region
Reactivity:	Human, Mouse, Rat, Horse, Pig, Rabbit, Cow, Zebrafish (Danio rerio)
Host:	Rabbit
Clonality:	Polyclonal
Conjugate:	This GPR75 antibody is un-conjugated
Application:	Western Blotting (WB)

Product Details

Immunogen:	The immunogen is a synthetic peptide directed towards the middle region of human GPR75
Sequence:	GQSSSTPINT RIEPYYSIYN SSPSQEESP CNLQPVNSFG FANSYIAMHY
Predicted Reactivity:	Cow: 100%, Horse: 100%, Human: 100%, Mouse: 100%, Pig: 100%, Rabbit: 100%, Rat: 100%, Zebrafish: 100%
Characteristics:	This is a rabbit polyclonal antibody against GPR75. It was validated on Western Blot using a cell lysate as a positive control.
Purification:	Affinity Purified

Target Details

Target:	GPR75
---------	-------

Target Details

Alternative Name:	GPR75 (GPR75 Products)
Background:	<p>GPR75 is a member of the G protein-coupled receptor family. GPRs are cell surface receptors that activate guanine-nucleotide binding proteins upon the binding of a ligand. GPR75 is a member of the G protein-coupled receptor family. GPRs are cell surface receptors that activate guanine-nucleotide binding proteins upon the binding of a ligand. [supplied by OMIM].</p> <p>PRIMARYREFSEQ_SPAN PRIMARY_IDENTIFIER PRIMARY_SPAN COMP 1-1894 AK314885.1 1-1894 1895-2115 AF072693.1 1834-2054</p> <p>Alias Symbols: GPR-chr2, WI-31133, GPRchr2, WI31133</p> <p>Protein Size: 540</p>
Molecular Weight:	59 kDa
Gene ID:	10936
NCBI Accession:	NM_006794 , NP_006785
UniProt:	B2RC02

Application Details

Application Notes:	Optimal working dilutions should be determined experimentally by the investigator.
Comment:	Antigen size: 540 AA
Restrictions:	For Research Use only

Handling

Format:	Liquid
Concentration:	Lot specific
Buffer:	Liquid. Purified antibody supplied in 1x PBS buffer with 0.09 % (w/v) sodium azide and 2 % sucrose.
Preservative:	Sodium azide
Precaution of Use:	This product contains Sodium azide: a POISONOUS AND HAZARDOUS SUBSTANCE which should be handled by trained staff only.
Handling Advice:	Avoid repeated freeze-thaw cycles.
Storage:	-20 °C
Storage Comment:	For short term use, store at 2-8°C up to 1 week. For long term storage, store at -20°C in small

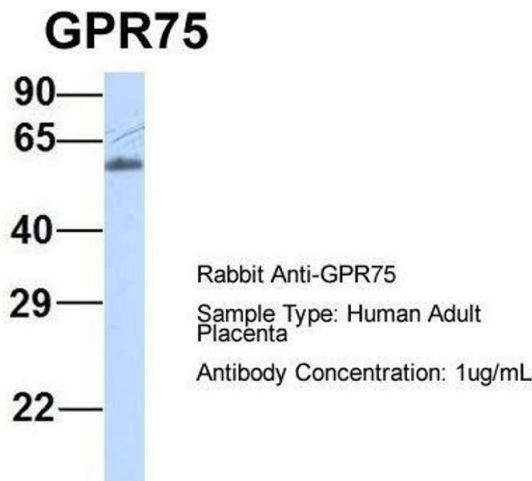
aliquots to prevent freeze-thaw cycles.

Images



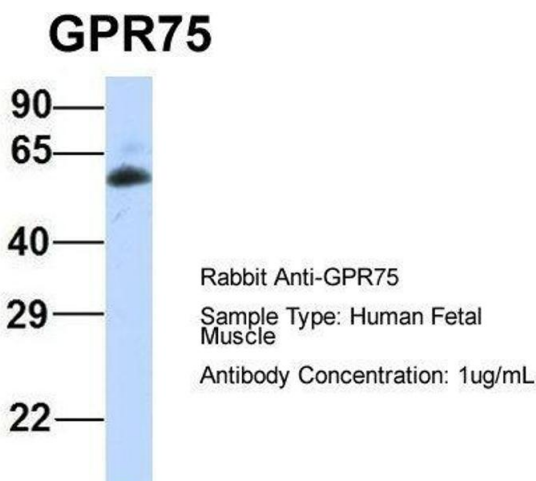
Western Blotting

Image 1. WB Suggested Anti-GPR75 Antibody Titration: 0.2-1 ug/ml ELISA Titer: 1:62500 Positive Control: HepG2 cell lysate



Western Blotting

Image 2. Host: Rabbit Target Name: GPR75 Sample Type: Human Adult Placenta Antibody Dilution: 1.0ug/ml



Western Blotting

Image 3. Host: Rabbit Target Name: GPR75 Sample Type: Human Fetal Muscle Antibody Dilution: 1.0ug/ml