

Datasheet for ABIN2777755
anti-Raly antibody (C-Term)[Go to Product page](#)

3 Images

Overview

Quantity:	100 µL
Target:	Raly (RALY)
Binding Specificity:	C-Term
Reactivity:	Human, Mouse, Rat, Dog, Cow, Guinea Pig, Rabbit, Horse
Host:	Rabbit
Clonality:	Polyclonal
Conjugate:	This Raly antibody is un-conjugated
Application:	Western Blotting (WB), Immunohistochemistry (IHC)

Product Details

Immunogen:	The immunogen is a synthetic peptide directed towards the C terminal region of human RALY
Sequence:	GGGSSRPPAP QENTTSEAGL PQGEARTRDD GDEEGLLTHS EEELEHSQDT
Predicted Reactivity:	Cow: 100%, Dog: 100%, Guinea Pig: 100%, Horse: 100%, Human: 100%, Mouse: 100%, Rabbit: 100%, Rat: 100%
Characteristics:	This is a rabbit polyclonal antibody against RALY. It was validated on Western Blot and immunohistochemistry.
Purification:	Protein A purified

Target Details

Target:	Raly (RALY)
---------	-------------

Target Details

Alternative Name:	RALY (RALY Products)
Background:	<p>In infectious mononucleosis, anti-EBNA-1 antibodies are produced which cross-react with multiple normal human proteins. The cross-reactivity is due to anti-gly/ala antibodies that cross-react with host proteins containing configurations like those in the EBNA-1 repeat. One such antigen is RALY which is a member of the heterogeneous nuclear ribonucleoprotein gene family. In infectious mononucleosis, anti-EBNA-1 antibodies are produced which cross-react with multiple normal human proteins. The cross-reactivity is due to anti-gly/ala antibodies that cross-react with host proteins containing configurations like those in the EBNA-1 repeat. One such antigen is RALY which is a member of the heterogeneous nuclear ribonucleoprotein gene family.</p> <p>Alias Symbols: MGC117312, P542, HNRPCL2</p> <p>Protein Interaction Partner: SUMO2, SUMO3, UBC, LIN28B, LIN28A, RPA3, RPA2, RPA1, SUZ12, BMI1, EZH2, EED, RNF2, PARK2, TARDBP, SOX2, CELF1, KHDRBS1, QKI, VCAM1, HNRNPK, HNRNPH1, HNRNPD, HNRNPC, FN1, FMNL1, SNRNP40, RPS20, MED1, HNRNPM, HNRNPU, DHX9, HSP90AB2P, RBMX, PABPC1, HNRNPA0,</p> <p>Protein Size: 306</p>
Molecular Weight:	32 kDa
Gene ID:	22913
NCBI Accession:	NM_016732 , NP_057951
UniProt:	Q9UKM9

Application Details

Application Notes:	Optimal working dilutions should be determined experimentally by the investigator.
Comment:	Antigen size: 306 AA
Restrictions:	For Research Use only

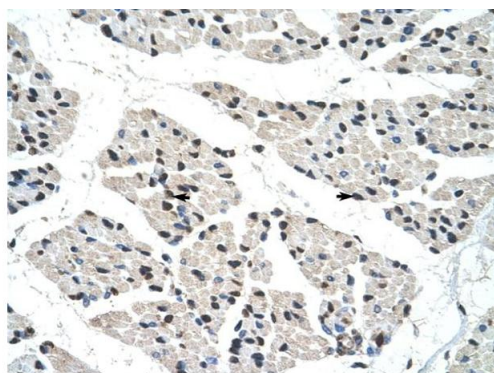
Handling

Format:	Liquid
Concentration:	Lot specific
Buffer:	Liquid. Purified antibody supplied in 1x PBS buffer with 0.09 % (w/v) sodium azide and 2 % sucrose.

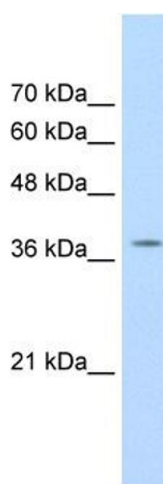
Handling

Preservative:	Sodium azide
Precaution of Use:	This product contains Sodium azide: a POISONOUS AND HAZARDOUS SUBSTANCE which should be handled by trained staff only.
Handling Advice:	Avoid repeated freeze-thaw cycles.
Storage:	-20 °C
Storage Comment:	For short term use, store at 2-8°C up to 1 week. For long term storage, store at -20°C in small aliquots to prevent freeze-thaw cycles.

Images



Rabbit Anti-RALY Antibody
Catalog Number: ARP33106
Lot Number: QC11816
Paraffin Embedded Tissue: Human Muscle
Cells with Positive label: Skeletal muscle cells (Indicated with Arrows)
Antibody Concentration: 4.0-8.0 µg/ml
Magnification: 400X

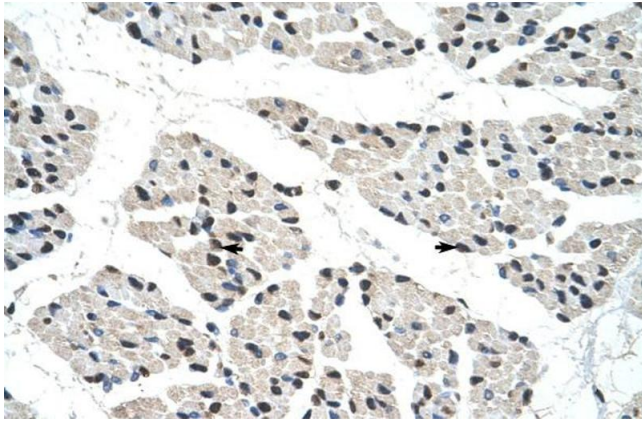


Immunohistochemistry

Image 1. Human Muscle

Western Blotting

Image 2. WB Suggested Anti-RALY Antibody Titration: 1.25ug/ml Positive Control: Jurkat cell lysate RALY is supported by BioGPS gene expression data to be expressed in Jurkat



Immunohistochemistry

Image 3. Human Muscle