

Datasheet for ABIN2777758
anti-SRRM2 antibody (C-Term)[Go to Product page](#)

2 Images

Overview

Quantity:	100 µL
Target:	SRRM2
Binding Specificity:	C-Term
Reactivity:	Human, Mouse, Rat, Cow, Dog, Guinea Pig, Horse, Pig, Rabbit
Host:	Rabbit
Clonality:	Polyclonal
Conjugate:	This SRRM2 antibody is un-conjugated
Application:	Western Blotting (WB)

Product Details

Immunogen:	The immunogen is a synthetic peptide directed towards the C-terminal region of Human SRRM2
Sequence:	DKKEKSATRP SPSPERSSTG PEPPAPTPLL AERHGGSPQP LATTPLSQEP
Predicted Reactivity:	Cow: 86%, Dog: 90%, Guinea Pig: 79%, Horse: 86%, Human: 100%, Mouse: 93%, Pig: 86%, Rabbit: 93%, Rat: 93%
Characteristics:	This is a rabbit polyclonal antibody against SRRM2. It was validated on Western Blot.
Purification:	Affinity Purified

Target Details

Target:	SRRM2
---------	-------

Target Details

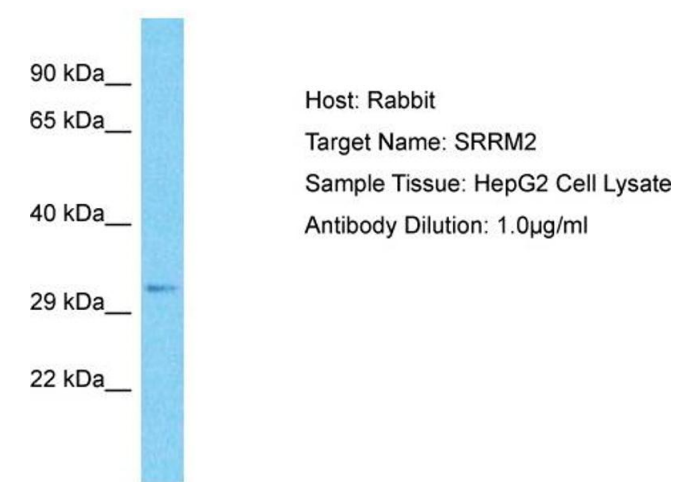
Alternative Name:	SRRM2 (SRRM2 Products)
Background:	<p>SRRM2 is involved in pre-mRNA splicing. It may function at or prior to the first catalytic step of splicing at the catalytic center of the spliceosome and may do so by stabilizing the catalytic center or the position of the RNA substrate. It binds to RNA.</p> <p>Protein Interaction Partner: AIRE, UBC, MDM2, EED, PIN1, CLK3, SRPK3, PRPF4B, SRPK2, SRPK1, CLK4, XRN1, YWHAE, HDAC2, HDAC6, HDAC11, PAN2, SRSF4, Dlg4, TTC14, SNIP1, tat, PRPF6, CSNK2A1, EIF4A3, MAGOH, ESR1, BARD1, PAXIP1, SEPT2, NDUFA7, HNRNPM, ILF3, ILF2, HSPA5, HSPA1A, HNRNPU, HNR</p> <p>Protein Size: 311</p>
Molecular Weight:	34 kDa
Gene ID:	23524

Application Details

Application Notes:	Optimal working dilution should be determined by the investigator.
Restrictions:	For Research Use only

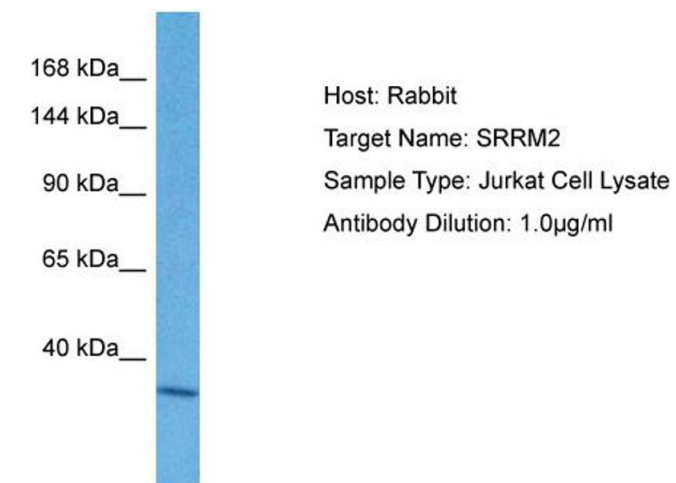
Handling

Format:	Liquid
Concentration:	1 mg/mL
Buffer:	Liquid. Purified antibody supplied in 1x PBS buffer with 0.09 % (w/v) sodium azide and 2 % sucrose.
Preservative:	Sodium azide
Precaution of Use:	This product contains Sodium azide: a POISONOUS AND HAZARDOUS SUBSTANCE which should be handled by trained staff only.
Handling Advice:	Avoid repeat freeze-thaw cycles.
Storage:	-20 °C
Storage Comment:	For short term use, store at 2-8°C up to 1 week. For long term storage, store at -20°C in small aliquots to prevent freeze-thaw cycles.



Western Blotting

Image 1. Host: Rabbit Target Name: SRRM2 Sample Type: HepG2 Whole Cell lysates Antibody Dilution: 1.0ug/ml



Western Blotting

Image 2. Host: Rabbit Target Name: SRRM2 Sample Tissue: Human Jurkat Whole Cell Antibody Dilution: 1ug/ml